

CGA LICENCED PREMISES

© 2024 CACI Limited and all other applicable third party notices (CGA) can be found at www.caci.co.uk/copyrightnotices.pdf

Area: P04107_Jolly Crofter, Stockport, SK3 9AB (1)
 Base: Great Britain
 Year: 2023

Licence Type	Profile	Per 1000 Pop (Area)	Per 1000 Pop (Base)	Index	0	100	200
Pubs & Full On	64	165.5	81.7	203			
Proprietary Club	5	12.9	7.3	178			
Registered Club	8	20.7	28.2	73			
Restaurant	27	69.8	32.1	218			
Residential	0	0.0	2.7	0			

Name	Description	License Type	Owner Name	Postcode
Last Monsoon	Independent Free	Restaurant	Independent Free	SK 3 0DT
Swan With Two Necks	Robinsons	Pubs & Full On	Robinsons	SK 1 1RY
Star & Garter	Robinsons	Pubs & Full On	Robinsons	SK 1 3HD
Red Bull	Robinsons	Pubs & Full On	Robinsons	SK 1 3AY
Queen Hotel	Robinsons	Pubs & Full On	Robinsons	SK 1 2DW
Plaza	Independent Free	Pubs & Full On	Independent Free	SK 1 1NU
Stockport Masonic Guild Club	Independent Free	Registered Club	Independent Free	SK 1 3UA
Se7En Grill & Bar	Independent Free	Restaurant	Independent Free	SK 1 1EB
Victoria	Punch Pub Company	Pubs & Full On	Punch Pub Company	SK 1 4HE
Bakers Vaults	Robinsons	Pubs & Full On	Robinsons	SK 1 1ES
Cocked Hat	Independent Free	Pubs & Full On	Independent Free	SK 1 1EW
Egerton Arms	Stonegate Pub Company	Pubs & Full On	Stonegate Pub Company	SK 1 1HD
Alfredos Social	Independent Free	Restaurant	Independent Free	SK 1 1LA
Chestergate Tavern	Blind Tiger Inns	Pubs & Full On	Star Pubs & Bars	SK 1 1NP
Nandos	Nandos Restaurants	Restaurant	Nandos Restaurants	SK 1 2HH
Boars Head	Sam Smith	Pubs & Full On	Sam Smith	SK 1 1TY
Arden Arms	Robinsons	Pubs & Full On	Robinsons	SK 1 2LX
Midway Tavern	Stonegate Pub Company	Pubs & Full On	Stonegate Pub Company	SK 1 2NX
Sun & Castle	Holt	Pubs & Full On	Holt	SK 1 3DL
Crown Inn	Unknown	Pubs & Full On	Unknown	SK 1 3ER
Baekdu	Independent Free	Restaurant	Independent Free	SK 1 3NA
Harappa	Independent Free	Restaurant	Independent Free	SK 1 3QH
Wheatsheaf Hotel	Punch Pub Company	Pubs & Full On	Punch Pub Company	SK 1 3RB
Townhall Tavern	Ei Group	Pubs & Full On	Ei Group	SK 1 3SL
Nelson Tavern	Star Pubs & Bars	Pubs & Full On	Star Pubs & Bars	SK 1 3UH
Stockport Town Hall	Independent Free	Pubs & Full On	Independent Free	SK 1 3XE
Victoria Bowling Club	Independent Free	Registered Club	Independent Free	SK 1 4EL
Bamford Arms	Whitbread	Pubs & Full On	Whitbread	SK 2 6NB
Duke Of York	Robinsons	Pubs & Full On	Robinsons	SK 2 6LR
Puss In Boots	Almond Family Pubs	Pubs & Full On	Robinsons	SK 2 6DQ
Alma Lodge Hotel	Independent Free	Pubs & Full On	Independent Free	SK 2 6EL
Blossoms Hotel	Robinsons	Pubs & Full On	Robinsons	SK 2 6NU
Plough	Stonegate Pub Company	Pubs & Full On	Stonegate Pub Company	SK 2 6QZ
Alexandra Hotel	Robinsons	Pubs & Full On	Robinsons	SK 3 9NJ
Grange Club	Independent Free	Registered Club	Independent Free	SK 3 0TL
Wycliffe Hotel	Independent Free	Pubs & Full On	Independent Free	SK 3 9NQ
Sir Robert Peel	Punch Pub Company	Pubs & Full On	Punch Pub Company	SK 3 9AR
Stockport Garrick Theatre	Independent Free	Pubs & Full On	Independent Free	SK 3 0EJ
British Railways Lmr Staff Club	Independent Free	Registered Club	Independent Free	SK 3 0TR
Armoury Inn	Robinsons	Pubs & Full On	Robinsons	SK 3 8BD
Our Lady Apos Parish Social Centre	Independent Free	Registered Club	Independent Free	SK 3 8BD
Stockport Cricket Club	Independent Free	Registered Club	Independent Free	SK 3 8HD
Jolly Crofter	Admiral Taverns Ltd	Pubs & Full On	Admiral Taverns Ltd	SK 3 9AB
Royal Oak	Stonegate Pub Company	Pubs & Full On	Stonegate Pub Company	SK 3 9AL
Edgeley Conservative Club	Independent Free	Registered Club	Independent Free	SK 3 9AN
Prince Albert	Stonegate Pub Company	Pubs & Full On	Stonegate Pub Company	SK 3 9AR
Stockport County Football Club	Independent Free	Proprietary Club	Independent Free	SK 3 9DD
Crown	Independent Free	Pubs & Full On	Independent Free	SK 4 1AR
Spinning Top	Independent Free	Pubs & Full On	Independent Free	SK 4 1AA
Magnet Freehouse	Unknown	Pubs & Full On	Unknown	SK 4 1HJ
Midland	*Other Small Retail Groups	Pubs & Full On	*Other Small Retail Groups	SK 4 1HJ
Grapes Hotel	Admiral Taverns Ltd	Pubs & Full On	Admiral Taverns Ltd	SK 4 1LF
Stockport Labour Club	Independent Free	Registered Club	Independent Free	SK 4 1QP

CGA LICENCED PREMISES

© 2024 CACI Limited and all other applicable third party notices (CGA) can be found at www.caci.co.uk/copyrightnotices.pdf

Area: P04107_Jolly Crofter, Stockport, SK3 9AB (1 |
 Base: Great Britain
 Year: 2023

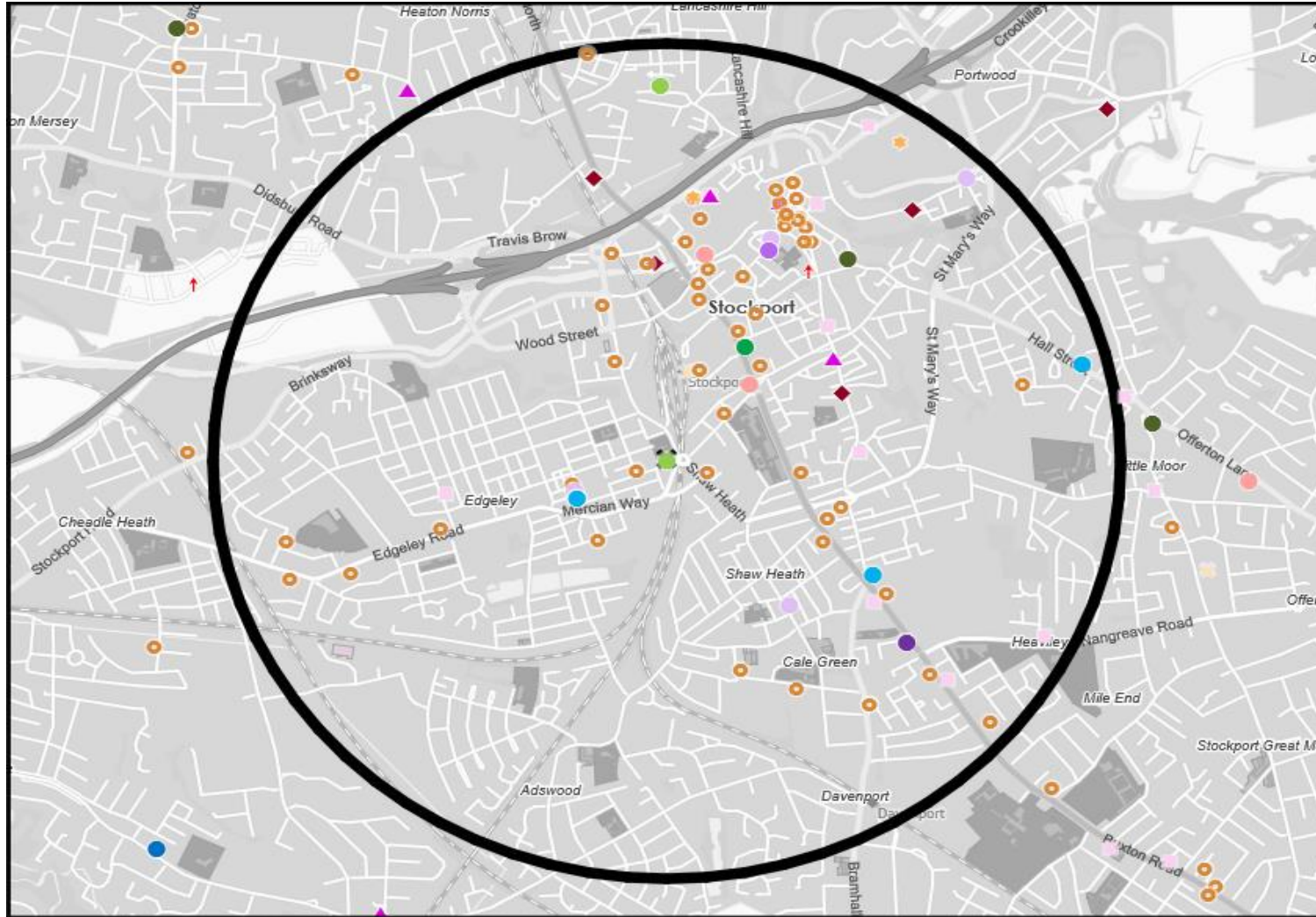
Licence Type	Profile	Per 1000 Pop (Area)	Per 1000 Pop (Base)	Index	0	100	200
Pubs & Full On	64	165.5	81.7	203			
Proprietary Club	5	12.9	7.3	178			
Registered Club	8	20.7	28.2	73			
Restaurant	27	69.8	32.1	218			
Residential	0	0.0	2.7	0			

Name	Description	License Type	Owner Name	Postcode
Life Leisure Avondale	Independent Free	Proprietary Club	Independent Free	SK 3 0UP
Old Rectory	Greene King	Pubs & Full On	Greene King	SK 1 1YG
Comfortable Gill	Independent Free	Pubs & Full On	Independent Free	SK 3 0DY
Cafe Sq	Independent Free	Restaurant	Independent Free	SK 1 1DH
Wellington Inn	Independent Free	Pubs & Full On	Independent Free	SK 1 1RA
Grosvenor Casino	Rank	Proprietary Club	Rank	SK 1 3AD
Jasmine House	Independent Free	Restaurant	Independent Free	SK 2 6NG
Calverts Court	Wetherspoons GB	Pubs & Full On	Wetherspoons GB	SK 1 1EB
Mr Ali Tandoori	Independent Free	Restaurant	Independent Free	SK 2 6LS
Buzz Bingo	Gala Group	Proprietary Club	Gala Group	SK 1 2NA
Little Lanka	Independent Free	Restaurant	Independent Free	SK 2 6NW
Kismet	Independent Free	Restaurant	Independent Free	SK 2 6PL
Aquila Nera Ristorante	Independent Free	Restaurant	Independent Free	SK 1 1HD
Casino 36	Independent Free	Proprietary Club	Independent Free	SK 1 1HD
Rozafa	Independent Free	Restaurant	Independent Free	SK 1 1EB
Dal Barista	Independent Free	Restaurant	Independent Free	SK 1 1LA
Chilli Massalla	Independent Free	Restaurant	Independent Free	SK 3 9AD
La Capilla	Independent Free	Restaurant	Independent Free	SK 1 1ES
Ate Days A Week	Independent Free	Restaurant	Independent Free	SK 1 1TY
Yellowhammer	Independent Free	Restaurant	Independent Free	SK 1 1JQ
Mekong Cat	Independent Free	Restaurant	Independent Free	SK 1 1JQ
Funky Monkey Coffee	Independent Free	Restaurant	Independent Free	SK 2 6JA
Gourmet Grill	Independent Free	Restaurant	Independent Free	SK 2 6NG
Angel Inn	Independent Free	Pubs & Full On	Independent Free	SK 1 1EY
Amp	Independent Free	Pubs & Full On	Independent Free	SK 1 1EW
Cherry Jam	Independent Free	Pubs & Full On	Independent Free	SK 1 1JP
Petersgate Tap	Independent Free	Pubs & Full On	Independent Free	SK 1 1EB
Where The Light Gets In	Independent Free	Restaurant	Independent Free	SK 1 1JY
Express By Holiday Inn	Atlas Hotels	Pubs & Full On	Atlas Hotels	SK 3 9JD
Travelodge	Dubai International Capital	Pubs & Full On	Dubai International Capital	SK 4 1BS
Zizzi	Azzurri Group Ltd	Restaurant	Azzurri Group Ltd	SK 1 1RY
Pizza Express	Hony Capital	Restaurant	Hony Capital	SK 1 1SA
Afiyet	Independent Free	Restaurant	Independent Free	SK 1 1SA
Light Cinema	Light Cinema	Pubs & Full On	Light Cinema	SK 1 1SA
Berretto Lounge	Loungers	Pubs & Full On	Loungers	SK 1 1SA
Bask	Independent Free	Pubs & Full On	Independent Free	SK 1 3SW
Project 53	Mobberley Fine Ales Limited	Pubs & Full On	Mobberley Fine Ales Limited	SK 1 1EU
Wellington	Independent Free	Pubs & Full On	Independent Free	SK 1 3RU
Rosie's Coffee House And Kitchen	Independent Free	Restaurant	Independent Free	SK 1 1RW
Cracked Actor	Independent Free	Pubs & Full On	Independent Free	SK 1 1JT
Stockport War Memorial Art Gallery	Independent Free	Pubs & Full On	Independent Free	SK 3 8AB
Produce Hall	Independent Free	Pubs & Full On	Independent Free	SK 1 1EU
Good Rebel	Independent Free	Pubs & Full On	Independent Free	SK 1 1JP
Market Hall	Independent Free	Pubs & Full On	Independent Free	SK 1 1UN
Milliner	Independent Free	Pubs & Full On	Independent Free	SK 2 6JA
This Godless Place	Independent Free	Pubs & Full On	Independent Free	SK 1 1XR
Enigma	Independent Free	Pubs & Full On	Independent Free	SK 1 1HD
Notion	Independent Free	Restaurant	Independent Free	SK 1 1TY
Vino Buono	Independent Free	Pubs & Full On	Independent Free	SK 3 8HG
Bohemian Arts Club	Independent Free	Pubs & Full On	Independent Free	SK 1 1JE
Runaway Brewery	Independent Free	Pubs & Full On	Independent Free	SK 4 1AW

MAP OF AREA

© 2024 CACI Limited and all other applicable third party notices (CGA) can be found at www.caci.co.uk/copyrightnotices.pdf
 Source: OS Open Data 2018

Area: P04107_Jolly Crofter, Stockport, SK3 9AB (1 Mile contour)



- KEY**
- Large pub co's & bars
 - Admiral Taverns Ltd
 - Ei Group
 - Greene King
 - Marston's
 - Mitchells & Butlers
 - Punch Pub Company
 - Stonegate Pub Company
 - Star Pubs & Bars
 - Wetherspoon
 - Whitbread
 - Shepherd Neame
 - Small to medium pub co's & bars
 - Family Brewers with pubs
 - Hotels
 - Restaurants
 - Leisure
 - Independent
 - Other
 - Site Location
 - Boundary

ACORN CATEGORY PROFILE - HOUSEHOLDS

© 2024 CACI Limited and all other applicable third party notices (Acorn) can be found at www.caci.co.uk/copyrightnotices.pdf

Area: P04107_Jolly Crofter, Stockport, SK3 9AB (1 Mile contour)
Base: Great Britain
Year: 2023

Acorn Category Description	Area Profile	% for Area	% for Base	Index 0	100	200
1 Affluent Achievers	805	4.4	22.1	20		
2 Rising Prosperity	459	2.5	10.2	25		
3 Comfortable Communities	5,349	29.2	26.5	110		
4 Financially Stretched	3,765	20.5	23.7	87		
5 Urban Adversity	7,891	43.0	17.2	250		
6 Not Private Households	70	0.4	0.3	111		
Total households		18,339				



Graph

Acorn Category Pen Portrait

4

Financially Stretched

12.2M

UK Adults

23.1%

of UK

Age range

All ages

House type

Semi-detached or terraced

Financial situation

Running into debt

Saving a lot

House tenure

Social renting

Children at home

Mixed

Number of beds

1-3

This category contains a mix of traditional areas of Britain, including social housing developments specifically for the elderly. It also includes student term-time areas.

Acorn Groups within Category 4: Financially Stretched

- K Student Life 13%
- L Modest Means 34%
- M Striving Families 34%
- N Poorer Pensioners 20%

ACORN GROUP PROFILE - HOUSEHOLDS

© 2024 CACI Limited and all other applicable third party notices (Acorn) can be found at www.caci.co.uk/copyrightnotices.pdf

Area: P04107_Jolly Crofter, Stockport, SK3 9AB (1 Mile contour)
Base: Great Britain
Year: 2023

Acorn Group Description	Area Profile	% for Area	% for Base	Index	0	100	200
1. Affluent Achievers							
1.A Lavish Lifestyles	0	0.0	1.1	0			
1.B Executive Wealth	243	1.3	11.3	12			
1.C Mature Money	562	3.1	9.6	32			
2. Rising Prosperity							
2.D City Sophisticates	0	0.0	3.8	0			
2.E Career Climbers	459	2.5	6.4	39			
3. Comfortable Communities							
3.F Countryside Communities	0	0.0	5.7	0			
3.G Successful Suburbs	159	0.9	6.0	15			
3.H Steady Neighbourhoods	1,611	8.8	7.4	119			
3.I Comfortable Seniors	23	0.1	2.9	4			
3.J Starting Out	3,556	19.4	4.6	426			
4. Financially Stretched							
4.K Student Life	646	3.5	2.5	141			
4.L Modest Means	1,091	5.9	8.0	75			
4.M Striving Families	976	5.3	7.4	71			
4.N Poorer Pensioners	1,052	5.7	5.8	100			
5. Urban Adversity							
5.O Young Hardship	4,169	22.7	6.3	364			
5.P Struggling Estates	852	4.6	5.7	81			
5.Q Difficult Circumstances	2,870	15.6	5.2	299			
6. Not Private Households							
6.R Not Private Households	70	0.4	0.3	111			
Total households	18,339						

Acorn Group Pen Portrait

4
M
Striving Families

4.1M
7.8%

UK Adults of UK

Struggling families on limited incomes in urban areas. These low income families typically live on traditional low-rise estates. Relatively high numbers of children are typical and there may be high numbers of single parents.

CORE DEMOGRAPHICS

Age range 25-44	Children at home 3+
House tenure Social renting	Family structure Single parent
Number of beds 3	House type Semi-detached or terraced

BRANDS

SHOPPING: PRIMARK PEACOCKS savers

LEISURE: HURRY KING MCDONALD GREGGS

WEBSITES: sky very hotukdeals

DIGITAL ATTITUDES

I worry about online security 58% <small>UK average: 59%</small>	Shopping online makes my life easier 60% <small>UK average: 62%</small>	I love the ease of using chat bots to get answers 29% <small>UK average: 28%</small>
-------------------------------------------------------------------------------	--------------------------------------------------------------------------------------	---------------------------------------------------------------------------------------------------

FINANCIAL PROFILE

Household income UK: £33k London: £38k <small>Average: £10k Average: £16k</small>	% Disposable income UK: 41% London: 35% <small>Average: 43% Average: 29%</small>	Financial situation
-------------------------------------------------------------------------------------------------------	------------------------------------------------------------------------------------------------------	-------------------------

TOP BEHAVIOURS

Moderate internet use	Below average social media use – apart from TikTok	Use of Direct.Gov website
------------------------------	-----------------------------------------------------------	----------------------------------

CATEGORY	GROUP	TYPE	MAP	WHAT IS ACORN?
----------	-------	------	-----	----------------

ACORN TYPE PROFILE - HOUSEHOLDS

© 2024 CACI Limited and all other applicable third party notices (Acorn) can be found at www.caci.co.uk/copyrightnotices.pdf

Area: P04107_Jolly Crofter, Stockport, SK3 9AB (1 Mile contour)
 Base: Great Britain
 Year: 2023

Sort by: Acorn Structure
 Index
 Profile %

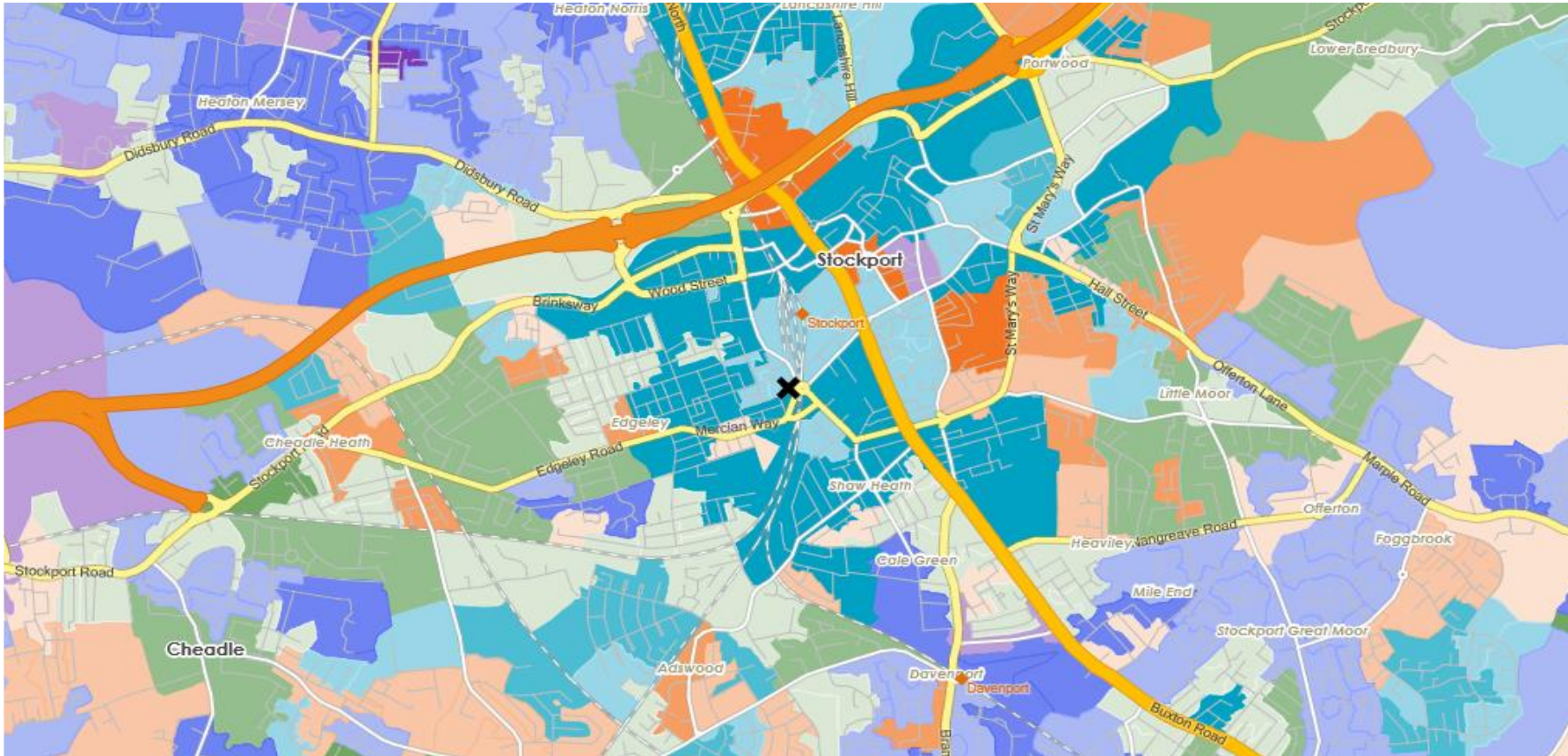
Acorn Type Description	Area Profile	% for Area	% for Base	Index	0	100	200
1. Affluent Achievers							
1.A Lavish Lifestyles							
1.A.1 Exclusive enclaves	0	0.0	0.1	0			
1.A.2 Metropolitan money	0	0.0	0.1	0			
1.A.3 Large house luxury	0	0.0	0.9	0			
1.B Executive Wealth							
1.B.4 Asset rich families	0	0.0	2.6	0			
1.B.5 Wealthy countryside commuters	0	0.0	2.5	0			
1.B.6 Financially comfortable families	84	0.5	2.2	21			
1.B.7 Affluent professionals	32	0.2	0.9	20			
1.B.8 Prosperous suburban families	99	0.5	1.5	35			
1.B.9 Well-off edge of towners	28	0.2	1.6	9			
1.C Mature Money							
1.C.10 Better-off villagers	0	0.0	3.1	0			
1.C.11 Settled suburbia, older people	485	2.6	2.8	94			
1.C.12 Retired and empty nesters	0	0.0	2.5	0			
1.C.13 Upmarket downsizers	77	0.4	1.3	32			
2. Rising Prosperity							
2.D City Sophisticates							
2.D.14 Townhouse cosmopolitans	0	0.0	0.7	0			
2.D.15 Younger professionals in smaller flats	0	0.0	1.5	0			
2.D.16 Metropolitan professionals	0	0.0	0.7	0			
2.D.17 Socialising young renters	0	0.0	1.0	0			
2.E Career Climbers							
2.E.18 Career driven young families	0	0.0	2.0	0			
2.E.19 First time buyers in small, modern homes	458	2.5	3.4	74			
2.E.20 Mixed metropolitan areas	1	0.0	1.0	1			
3. Comfortable Communities							
3.F Countryside Communities							
3.F.21 Farms and cottages	0	0.0	1.5	0			
3.F.22 Older couples and families in rural areas	0	0.0	1.0	0			
3.F.23 Owner occupiers in small towns and villages	0	0.0	3.2	0			
3.G Successful Suburbs							
3.G.24 Comfortably-off families in modern housing	104	0.6	2.7	21			
3.G.25 Larger family homes, multi-ethnic areas	0	0.0	0.8	0			
3.G.26 Semi-professional families, owner occupied neighbourhoods	55	0.3	2.4	12			
3.H Steady Neighbourhoods							
3.H.27 Suburban semis, conventional attitudes	1,238	6.8	3.5	195			
3.H.28 Owner occupied terraces, average income	86	0.5	1.6	29			
3.H.29 Established suburbs, older families	287	1.6	2.3	67			
3.I Comfortable Seniors							
3.I.30 Older people, neat and tidy neighbourhoods	2	0.0	2.4	0			
3.I.31 Elderly singles in purpose-built accommodation	21	0.1	0.5	24			
3.J Starting Out							
3.J.32 Educated families in terraces, young children	2,516	13.7	2.2	638			
3.J.33 Smaller houses and starter homes	1,040	5.7	2.4	236			
4. Financially Stretched							
4.K Student Life							
4.K.34 Student flats and halls of residence	0	0.0	0.3	0			
4.K.35 Term-time terraces	0	0.0	0.2	0			
4.K.36 Educated young people in flats and tenements	646	3.5	1.9	183			
4.L Modest Means							
4.L.37 Low cost flats in suburban areas	290	1.6	1.4	110			
4.L.38 Semi-skilled workers in traditional neighbourhoods	410	2.2	2.6	85			
4.L.39 Fading owner occupied terraces	391	2.1	2.9	73			
4.L.40 High occupancy terraces, culturally diverse family areas	0	0.0	1.0	0			
4.M Striving Families							
4.M.41 Labouring semi-rural estates	0	0.0	1.6	0			
4.M.42 Struggling young families in post-war terraces	226	1.2	1.6	75			
4.M.43 Families in right-to-buy estates	558	3.0	2.0	149			
4.M.44 Post-war estates, limited means	192	1.0	2.2	48			
4.N Poorer Pensioners							
4.N.45 Pensioners in social housing, semis and terraces	80	0.4	0.8	55			
4.N.46 Elderly people in social rented flats	323	1.8	1.0	171			
4.N.47 Low income older people in smaller semis	32	0.2	2.2	8			
4.N.48 Pensioners and singles in social rented flats	617	3.4	1.7	197			
5. Urban Adversity							
5.O Young Hardship							
5.O.49 Young families in low cost private flats	599	3.3	2.2	149			
5.O.50 Struggling younger people in mixed tenure	956	5.2	1.8	290			
5.O.51 Young people in small, low cost terraces	2,614	14.3	2.3	629			
5.P Struggling Estates							
5.P.52 Poorer families, many children, terraced housing	251	1.4	1.6	88			
5.P.53 Low income terraces	0	0.0	0.8	0			
5.P.54 Multi-ethnic, purpose-built estates	0	0.0	1.0	0			
5.P.55 Deprived and ethnically diverse in flats	0	0.0	0.7	0			
5.P.56 Low income large families in social rented semis	601	3.3	1.6	205			
5.Q Difficult Circumstances							
5.Q.57 Social rented flats, families and single parents	412	2.2	1.5	149			
5.Q.58 Singles and young families, some receiving benefits	266	1.5	1.8	82			
5.Q.59 Deprived areas and high-rise flats	2,192	12.0	2.0	607			
6. Not Private Households							
6.R Not Private Households							
6.R.60 Active communal population	5	0.0	0.1	46			
6.R.61 Inactive communal population	65	0.4	0.3	125			
6.R.62 Business areas without resident population	0	0	0	0			
Total households	18,339						

DOMINANT ACORN GROUP - HOUSEHOLDS

© 2024 CACI Limited and all other applicable third party notices (Acorn) can be found at www.caci.co.uk/copyrightnotices.pdf

Source: OS Open Data 2018

Area: P04107_Jolly Crofter, Stockport, SK3 9AB (1 Mile contour)



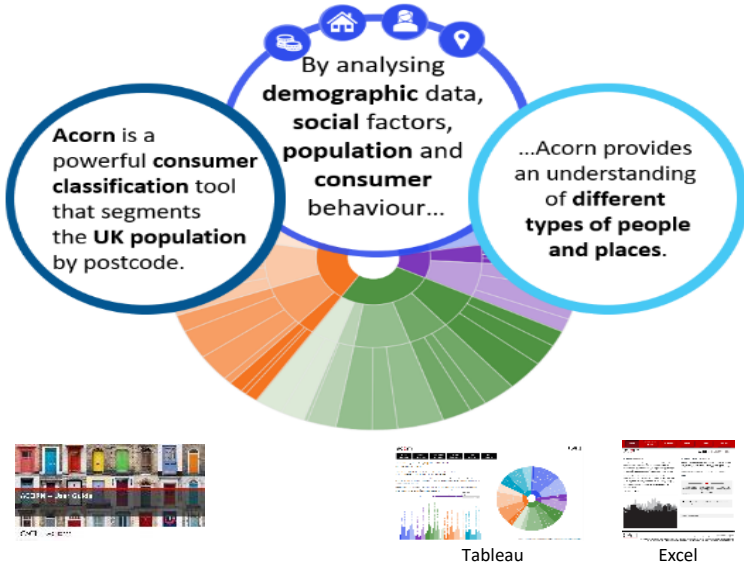
- Dominant Acorn Category
- % Affluent Achievers
- % Rising Prosperity
- % Comfortable Communities
- % Financially Stretched
- % Urban Adversity
- Dominant Acorn Group

- Acorn Groups**
- 1.A Lavish Lifestyles
 - 1.B Executive Wealth
 - 1.C Mature Money
 - 2.D City Sophisticates
 - 2.E Career Climbers
 - 3.F Countryside Communities
 - 3.G Successful Suburbs
 - 3.H Steady Neighbourhoods
 - 3.I Comfortable Seniors
 - 3.J Starting Out
 - 4.K Student Life
 - 4.L Modest Means
 - 4.M Striving Families
 - 4.N Poorer Pensioners
 - 5.O Young Hardship
 - 5.P Struggling Estates
 - 5.Q Difficult Circumstances
 - 6.R Not Private Households

Area boundary

ACORN - WHAT IS IT?

© 2024 CACI Limited and all other applicable third party notices (Acorn) can be found at www.caci.co.uk/copyrightnotices.pdf



6 CATEGORIES 18 GROUPS 62 TYPES

1. Affluent Achievers	A. Lavish Lifestyles	1-3
	B. Executive Wealth	4-9
	C. Mature Money	10-13
2. Rising Prosperity	D. City Sophisticates	14-17
	E. Career Climbers	18-20
	F. Countryside Communities	21-23
	G. Successful Suburbs	24-26
	H. Steady Neighbourhoods	27-29
	I. Comfortable Seniors	30-31
	J. Starting Out	32-33
3. Comfortable Communities	K. Student Life	34-36
	L. Modest Means	37-40
	M. Striving Families	41-44
	N. Poorer Pensioners	45-48
4. Financially Stretched	O. Young Hardship	49-51
	P. Struggling Estates	52-56
	Q. Difficult Circumstances	57-59
5. Urban Adversity	R. Not Private Households	60-62
6. Not Private Households		

1 Affluent Achievers

12.1M UK Adults 22.8% of UK

Age range: 55+

Financial situation: Running into debt ↔ Saving a lot

Children at home: 0

House type: Detached

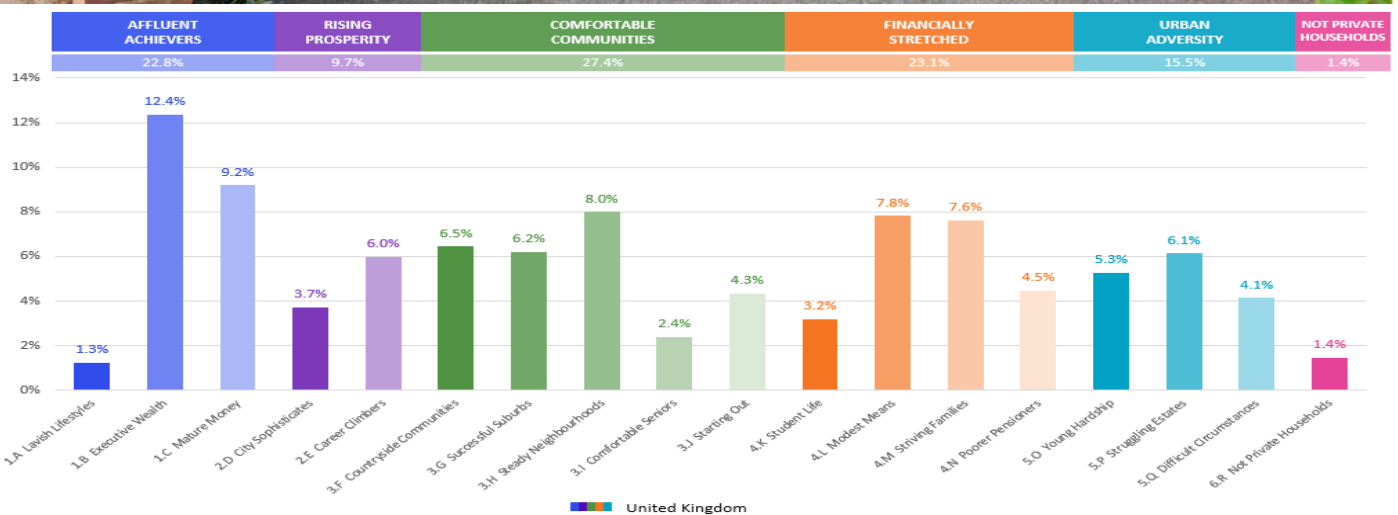
House tenure: Owned outright

Number of beds: 4+

Acorn Groups within Category 1: Affluent Achievers

- A. Lavish Lifestyles: 6%
- B. Executive Wealth: 54%
- C. Mature Money: 40%

These are some of the most financially successful people in the UK. They live in affluent, high status areas of the country. They are healthy, wealthy and confident consumers.



MAP OF AREA

© 2024 CACI Limited and all other applicable third party notices can be found at www.caci.co.uk/copyrightnotices.pdf

Source: OS Open Data 2018

Area: P04107_Jolly Crofter, Stockport, SK3 9AB (1 Mile contour)

