

CATEGORY

GROUP

TYPE

MAP

WHAT IS ACORN?

## ACORN CATEGORY PROFILE - HOUSEHOLDS

© 2021 CACI Limited and all other applicable third party notices (Acorn) can be found at [www.caci.co.uk/copyrightnotices.pdf](http://www.caci.co.uk/copyrightnotices.pdf)

Area: ATLT\_Merry MonarchLE3 OLP (1 Mile contour)

Base: Great Britain

Year: 2021

Acorn Category Description	Area Profile	% for Area	% for Base	Index 0	100	200
1 Affluent Achievers	647	3.4	22.0	15		
2 Rising Prosperity	680	3.5	10.1	35		
3 Comfortable Communities	3,379	17.5	26.2	67		
4 Financially Stretched	6,372	33.0	23.7	139		
5 Urban Adversity	7,887	40.9	17.6	232		
6 Not Private Households	324	1.7	0.3	504		
<b>Total households</b>	<b>19,289</b>					



Graph

## Acorn Category Pen Portrait



CATEGORY

GROUP

TYPE

MAP

WHAT IS ACORN?

## ACORN GROUP PROFILE - HOUSEHOLDS

© 2021 CACI Limited and all other applicable third party notices (Acorn) can be found at www.caci.co.uk/copyrightnotices.pdf

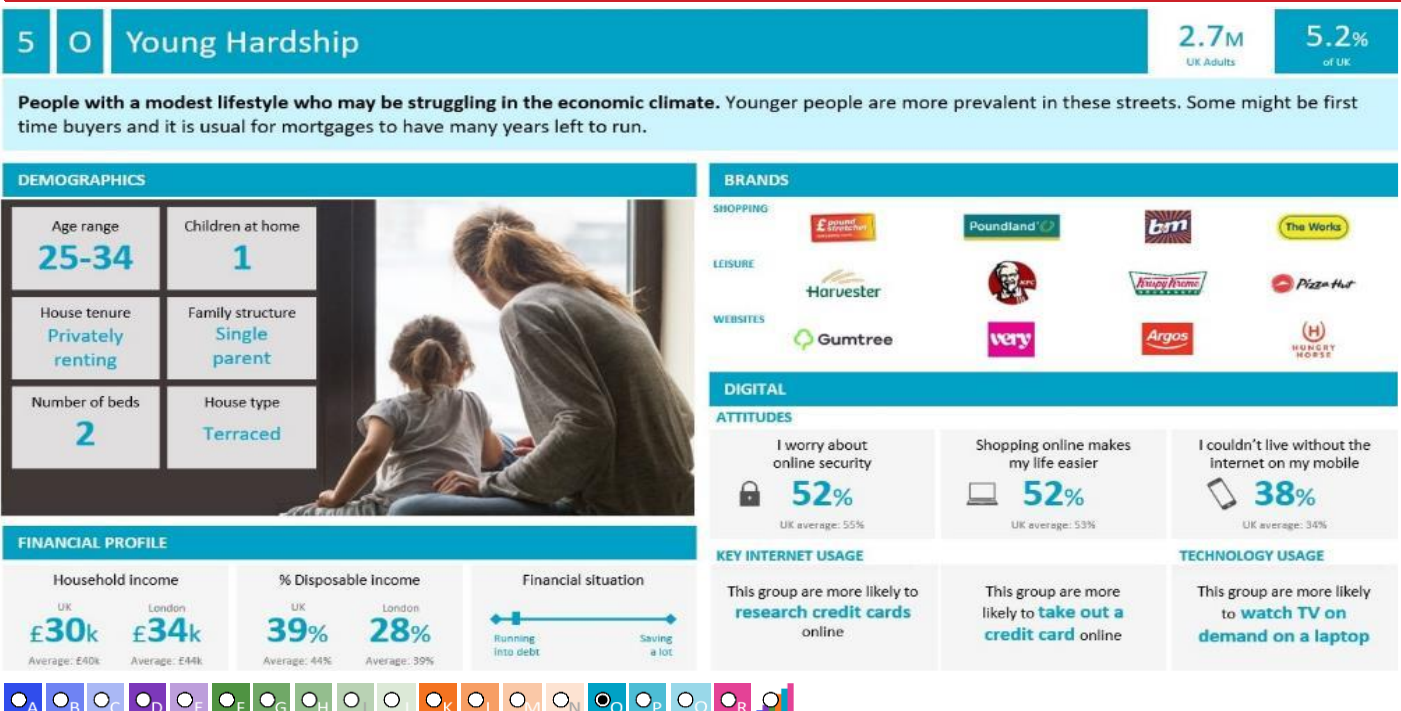
Area: ATLT\_Merry MonarchLE3 OLP (1 Mile contour)

Base: Great Britain

Year: 2021

Acorn Group Description	Area Profile	% for Area	% for Base	Index	0	100	200
<b>1. Affluent Achievers</b>							
1.A Lavish Lifestyles	0	0.0	1.1	0			
1.B Executive Wealth	216	1.1	11.2	10			
1.C Mature Money	431	2.2	9.6	23			
<b>2. Rising Prosperity</b>							
2.D City Sophisticates	57	0.3	4.0	7			
2.E Career Climbers	623	3.2	6.2	52			
<b>3. Comfortable Communities</b>							
3.F Countryside Communities	0	0.0	5.7	0			
3.G Successful Suburbs	233	1.2	5.9	21			
3.H Steady Neighbourhoods	873	4.5	7.4	62			
3.I Comfortable Seniors	39	0.2	2.9	7			
3.J Starting Out	2,234	11.6	4.3	266			
<b>4. Financially Stretched</b>							
4.K Student Life	5,668	29.4	2.4	1,245			
4.L Modest Means	191	1.0	7.9	13			
4.M Striving Families	429	2.2	7.5	29			
4.N Poorer Pensioners	84	0.4	5.9	7			
<b>5. Urban Adversity</b>							
5.O Young Hardship	5,846	30.3	6.1	493			
5.P Struggling Estates	1,024	5.3	6.1	87			
5.Q Difficult Circumstances	1,017	5.3	5.3	99			
<b>6. Not Private Households</b>							
6.R Not Private Households	324	1.7	0.3	504			
<b>Total households</b>	<b>19,289</b>						

## Acorn Group Pen Portrait



CATEGORY

GROUP

TYPE

MAP

WHAT IS ACORN?

## ACORN TYPE PROFILE - HOUSEHOLDS

© 2021 CACI Limited and all other applicable third party notices (Acorn) can be found at www.caci.co.uk/copyrightnotices.pdf

Area: ATLT\_Merry MonarchLE3 OLP (1 Mile contour)

Base: Great Britain

Year: 2021

Sort by:  Acorn Structure  
 Index  
 Profile %

Acorn Type Description		Area Profile	% for Area	% for Base	Index	0	100	200
<b>1. Affluent Achievers</b>								
<b>1.A Lavish Lifestyles</b>								
	1.A.1 Exclusive enclaves	0	0.0	0.1	0			
	1.A.2 Metropolitan money	0	0.0	0.2	0			
	1.A.3 Large house luxury	0	0.0	0.9	0			
<b>1.B Executive Wealth</b>								
	1.B.4 Asset rich families	0	0.0	2.6	0			
	1.B.5 Wealthy countryside commuters	0	0.0	2.4	0			
	1.B.6 Financially comfortable families	14	0.1	2.2	3			
	1.B.7 Affluent professionals	0	0.0	0.9	0			
	1.B.8 Prosperous suburban families	202	1.0	1.5	68			
	1.B.9 Well-off edge of towners	0	0.0	1.6	0			
<b>1.C Mature Money</b>								
	1.C.10 Better-off villagers	0	0.0	3.0	0			
	1.C.11 Settled suburbia, older people	406	2.1	2.9	74			
	1.C.12 Retired and empty nesters	0	0.0	2.5	0			
	1.C.13 Upmarket downsizers	25	0.1	1.3	10			
<b>2. Rising Prosperity</b>								
<b>2.D City Sophisticates</b>								
	2.D.14 Townhouse cosmopolitans	0	0.0	0.7	0			
	2.D.15 Younger professionals in smaller flats	0	0.0	1.5	0			
	2.D.16 Metropolitan professionals	0	0.0	0.8	0			
	2.D.17 Socialising young renters	57	0.3	1.0	29			
<b>2.E Career Climbers</b>								
	2.E.18 Career driven young families	0	0.0	1.9	0			
	2.E.19 First time buyers in small, modern homes	436	2.3	3.3	69			
	2.E.20 Mixed metropolitan areas	187	1.0	1.0	95			
<b>3. Comfortable Communities</b>								
<b>3.F Countryside Communities</b>								
	3.F.21 Farms and cottages	0	0.0	1.5	0			
	3.F.22 Older couples and families in rural areas	0	0.0	1.1	0			
	3.F.23 Owner occupiers in small towns and villages	0	0.0	3.2	0			
<b>3.G Successful Suburbs</b>								
	3.G.24 Comfortably-off families in modern housing	79	0.4	2.6	16			
	3.G.25 Larger family homes, multi-ethnic areas	154	0.8	0.8	97			
	3.G.26 Semi-professional families, owner occupied neighbourhoods	0	0.0	2.4	0			
<b>3.H Steady Neighbourhoods</b>								
	3.H.27 Suburban semis, conventional attitudes	602	3.1	3.4	91			
	3.H.28 Owner occupied terraces, average income	233	1.2	1.6	76			
	3.H.29 Established suburbs, older families	38	0.2	2.3	8			
<b>3.I Comfortable Seniors</b>								
	3.I.30 Older people, neat and tidy neighbourhoods	39	0.2	2.4	8			
	3.I.31 Elderly singles in purpose-built accommodation	0	0.0	0.5	0			
<b>3.J Starting Out</b>								
	3.J.32 Educated families in terraces, young children	2,080	10.8	2.1	515			
	3.J.33 Smaller houses and starter homes	154	0.8	2.3	35			
<b>4. Financially Stretched</b>								
<b>4.K Student Life</b>								
	4.K.34 Student flats and halls of residence	1,323	6.9	0.4	1,879			
	4.K.35 Term-time terraces	613	3.2	0.3	1,229			
	4.K.36 Educated young people in flats and tenements	3,732	19.3	1.7	1,114			
<b>4.L Modest Means</b>								
	4.L.37 Low cost flats in suburban areas	77	0.4	1.4	28			
	4.L.38 Semi-skilled workers in traditional neighbourhoods	103	0.5	2.6	20			
	4.L.39 Fading owner occupied terraces	11	0.1	2.9	2			
	4.L.40 High occupancy terraces, culturally diverse family areas	0	0.0	1.0	0			
<b>4.M Striving Families</b>								
	4.M.41 Labouring semi-rural estates	0	0.0	1.6	0			
	4.M.42 Struggling young families in post-war terraces	108	0.6	1.7	33			
	4.M.43 Families in right-to-buy estates	321	1.7	2.1	80			
	4.M.44 Post-war estates, limited means	0	0.0	2.2	0			
<b>4.N Poorer Pensioners</b>								
	4.N.45 Pensioners in social housing, semis and terraces	30	0.2	0.8	20			
	4.N.46 Elderly people in social rented flats	0	0.0	1.1	0			
	4.N.47 Low income older people in smaller semis	0	0.0	2.3	0			
	4.N.48 Pensioners and singles in social rented flats	54	0.3	1.8	16			
<b>5. Urban Adversity</b>								
<b>5.O Young Hardship</b>								
	5.O.49 Young families in low cost private flats	549	2.8	2.1	133			
	5.O.50 Struggling younger people in mixed tenure	806	4.2	1.7	239			
	5.O.51 Young people in small, low cost terraces	4,491	23.3	2.3	1,033			
<b>5.P Struggling Estates</b>								
	5.P.52 Poorer families, many children, terraced housing	212	1.1	1.6	68			
	5.P.53 Low income terraces	156	0.8	0.9	93			
	5.P.54 Multi-ethnic, purpose-built estates	51	0.3	1.2	23			
	5.P.55 Deprived and ethnically diverse in flats	134	0.7	0.8	86			
	5.P.56 Low income large families in social rented semis	471	2.4	1.6	148			
<b>5.Q Difficult Circumstances</b>								
	5.Q.57 Social rented flats, families and single parents	7	0.0	1.5	2			
	5.Q.58 Singles and young families, some receiving benefits	293	1.5	1.8	85			
	5.Q.59 Deprived areas and high-rise flats	717	3.7	2.0	183			
<b>6. Not Private Households</b>								
<b>6.R Not Private Households</b>								
	6.R.60 Active communal population	65	0.3	0.1	579			
	6.R.61 Inactive communal population	259	1.3	0.3	488			
	6.R.62 Business areas without resident population	0	0	0	0			
<b>Total households</b>		<b>19,289</b>						



CATEGORY

GROUP

TYPE

MAP

WHAT IS ACORN?

## DOMINANT ACORN GROUP - HOUSEHOLDS

© 2021 CACI Limited and all other applicable third party notices (Acorn) can be found at [www.caci.co.uk/copyrightnotices.pdf](http://www.caci.co.uk/copyrightnotices.pdf)

Source: OS Open Data 2018

Area: ATLT\_Merry MonarchLE3 OLP (1 Mile contour)



- Dominant Acorn Category
- % Affluent Achievers
- % Rising Prosperity
- % Comfortable Communities
- % Financially Stretched
- % Urban Adversity
- Dominant Acorn Group

### Acorn Groups

- 1.A Lavish Lifestyles
- 1.B Executive Wealth
- 1.C Mature Money
- 2.D City Sophisticates
- 2.E Career Climbers
- 3.F Countryside Communities
- 3.G Successful Suburbs
- 3.H Steady Neighbourhoods
- 3.I Comfortable Seniors
- 3.J Starting Out
- 4.K Student Life
- 4.L Modest Means
- 4.M Striving Families
- 4.N Poorer Pensioners
- 5.O Young Hardship
- 5.P Struggling Estates
- 5.Q Difficult Circumstances
- 6.R Not Private Households

Area boundary

CATEGORY

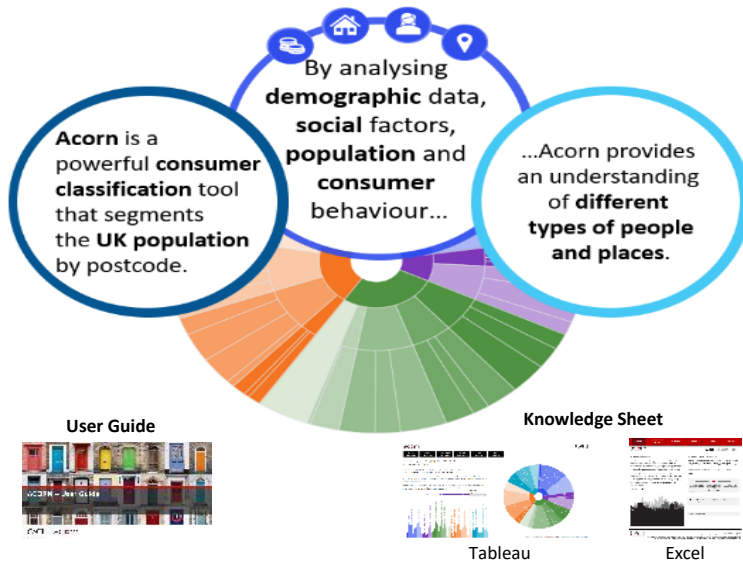
GROUP

TYPE

MAP

WHAT IS ACORN?

## ACORN - WHAT IS IT?

© 2021 CACI Limited and all other applicable third party notices (Acorn) can be found at [www.caci.co.uk/copyrightnotices.pdf](http://www.caci.co.uk/copyrightnotices.pdf)

6 CATEGORIES

18 GROUPS

62 TYPES

1. Affluent Achievers	A. Lavish Lifestyles	1-3
	B. Executive Wealth	4-9
	C. Mature Money	10-13
2. Rising Prosperity	D. City Sophisticates	14-17
	E. Career Climbers	18-20
	F. Countryside Communities	21-23
3. Comfortable Communities	G. Successful Suburbs	24-26
	H. Steady Neighbourhoods	27-29
	I. Comfortable Seniors	30-31
	J. Starting Out	32-33
4. Financially Stretched	K. Student Life	34-36
	L. Modest Means	37-40
	M. Striving Families	41-44
	N. Poorer Pensioners	45-48
5. Urban Adversity	O. Young Hardship	49-51
	P. Struggling Estates	52-56
	Q. Difficult Circumstances	57-59
6. Not Private Households	R. Not Private Households	60-62

1 Affluent Achievers

12.0M UK Adults

22.8% of UK

Age range

55+

Financial situation

Running into debt

Saving a lot

Children at home

0

House type

Detached

House tenure

Owned outright

Number of beds

4+

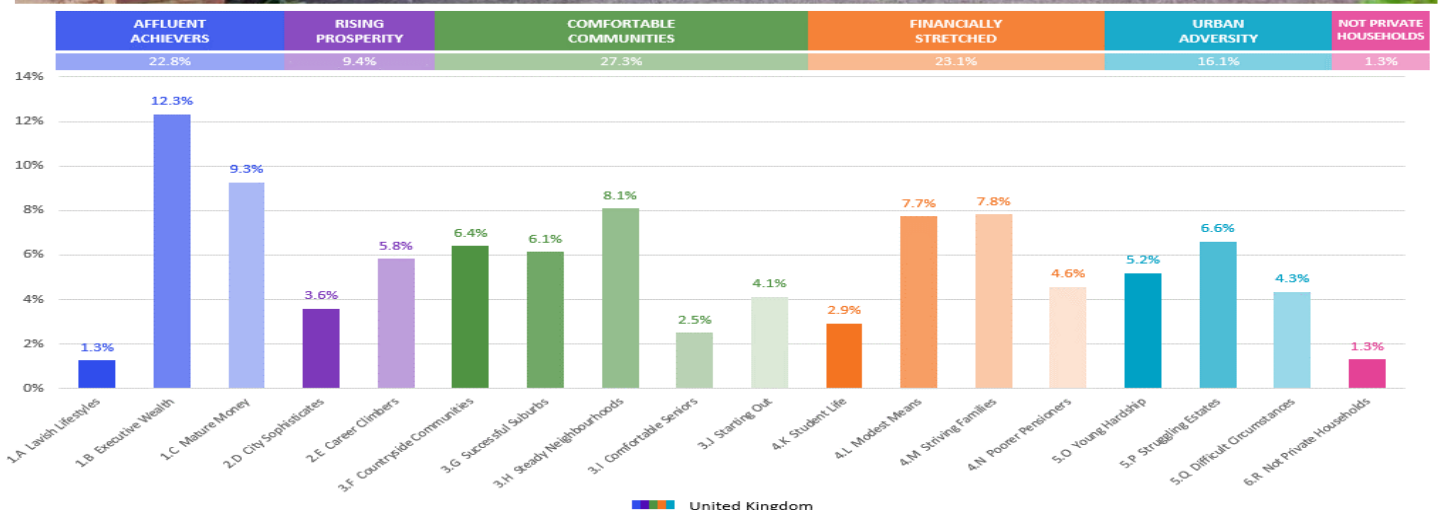
These are some of the most financially successful people in the UK. They live in affluent, high status areas of the country. They are healthy, wealthy and confident consumers.

Acorn Groups within Category 1: Affluent Achievers

A. Lavish Lifestyles

B. Executive Wealth

C. Mature Money





# CGA LICENCED PREMISES

© 2021 CACI Limited and all other applicable third party notices (CGA) can be found at [www.caci.co.uk/copyrightnotices.pdf](http://www.caci.co.uk/copyrightnotices.pdf)

Area: ATLT\_Merry MonarchLE3 OLP (1 Mile contou  
Base: Great Britain  
Year: 2021

Licence Type	Profile	Per 1000 Pop (Area)	Per 1000 Pop (Base)	Index	0	100	200
Pubs & Full On	71	135.5	84.9	160			
Proprietary Club	6	11.5	8.1	141			
Registered Club	9	17.2	29.9	58			
Restaurant	37	70.6	34.6	204			
Residential	0	0.0	3.5	0			

Name	Description	License Type	Owner Name	Postcode
Tree	Wells & Co	Pubs & Full On	Star Pubs & Bars	LE 1 4JB
Mosh	Independent Free	Proprietary Club	Independent Free	LE 1 4LD
Villare	Independent Free	Pubs & Full On	Independent Free	LE 1 4LD
Richard Iii	Everards	Pubs & Full On	Everards	LE 1 4NN
Tandem	Independent Free	Restaurant	Independent Free	LE 1 4PG
Knight And Garter	Everards	Pubs & Full On	Everards	LE 1 5AW
Friary	Stonegate Pub Company	Pubs & Full On	Stonegate Pub Company	LE 1 5AW
Spencers	Independent Free	Pubs & Full On	Independent Free	LE 1 5EU
Globe	Ever So Sensible Bars	Pubs & Full On	Everards	LE 1 5EU
Corn Exchange	Wetherspoon	Pubs & Full On	Wetherspoon	LE 1 5GG
Market Tavern	Independent Free	Pubs & Full On	Independent Free	LE 1 5GG
Rutland & Derby Arms	Ssoosh Inns	Pubs & Full On	Everards	LE 1 5JN
Holiday Inn	InterContinental Hotels Group	Pubs & Full On	InterContinental Hotels Group	LE 1 5LX
Swan & Rushes	Independent Free	Pubs & Full On	Independent Free	LE 1 5WR
Bowling Green	Stonegate Pub Company	Pubs & Full On	Stonegate Pub Company	LE 1 5XW
Cafe Bruxelles	Independent Free	Pubs & Full On	Independent Free	LE 1 5YP
Shanghi Moon	Independent Free	Restaurant	Independent Free	LE 1 5YP
Duffys Bar	Independent Free	Pubs & Full On	Independent Free	LE 1 6BT
Sir Robert Peel	Everards	Pubs & Full On	Everards	LE 2 7DD
Leicester Rowing Club	Independent Free	Registered Club	Independent Free	LE 2 7AU
West Cotes Constitutional Club	Independent Free	Registered Club	Independent Free	LE 3 0DG
Dhaka Deli Restaurant	Independent Free	Restaurant	Independent Free	LE 3 0DL
Western Hotel	Steamin Billy Brewing Co	Pubs & Full On	Steamin Billy Brewing Co	LE 3 0GA
Westcotes Bowl & Tennis Club	Independent Free	Registered Club	Independent Free	LE 3 0LD
Merry Monarch	Admiral Taverns Ltd	Pubs & Full On	Admiral Taverns Ltd	LE 3 0LP
Ukranian Social Club	Independent Free	Registered Club	Independent Free	LE 3 0QD
West Leicester Conservative Club	Independent Free	Registered Club	Independent Free	LE 3 0QU
West End Working Mens Club & Ins	Independent Free	Registered Club	Independent Free	LE 3 1LD
Chef And Spice	Independent Free	Restaurant	Independent Free	LE 3 5PG
Shamim Restaurant	Independent Free	Restaurant	Independent Free	LE 3 5GF
Gate 66	Independent Free	Pubs & Full On	Independent Free	LE 3 5LG
Boxed	Independent Free	Proprietary Club	Independent Free	LE 3 5LH
Black Horse	Everards	Pubs & Full On	Everards	LE 3 5LT
Crows Nest	Everards	Pubs & Full On	Everards	LE 3 5QW
Leicester Estonian House Club	Independent Free	Registered Club	Independent Free	LE 3 5RS
Sir Charles Napier	Stonegate Pub Company	Pubs & Full On	Stonegate Pub Company	LE 3 6AR
Newfoundpool Working Mens Club & In	Independent Free	Registered Club	Independent Free	LE 3 9FJ
Whitwick Constitutional Club	Independent Free	Registered Club	Independent Free	LE 1 5ET
Miyaki	Independent Free	Restaurant	Independent Free	LE 3 0PE
Firefly	Marston's	Pubs & Full On	Marston's	LE 1 5JN
ONeills	Mitchells & Butlers	Pubs & Full On	Mitchells & Butlers	LE 1 5DR
Soar Point	Stonegate Pub Company	Pubs & Full On	Stonegate Pub Company	LE 2 7BY
Oddbar	Independent Free	Pubs & Full On	Independent Free	LE 1 5JN
Hogarths	Amber Taverns	Pubs & Full On	Amber Taverns	LE 1 5AW
Oppa Korean Restaurant	Independent Free	Restaurant	Independent Free	LE 1 5YP
High Cross	Wetherspoon	Pubs & Full On	Wetherspoon	LE 1 4JB
Queen Of Bradgate	Star Pubs & Bars	Pubs & Full On	Star Pubs & Bars	LE 1 4JB
Brewdog	BrewDog plc	Pubs & Full On	BrewDog plc	LE 1 5RA
Oasis Bar	Independent Free	Pubs & Full On	Independent Free	LE 3 0BT
Metal Monocle	Independent Free	Pubs & Full On	Independent Free	LE 3 5LH
Rileys	Weight Partners Ltd	Proprietary Club	Weight Partners Ltd	LE 2 7EE
North Bar And Kitchen	Independent Free	Pubs & Full On	Independent Free	LE 3 0RB
Legends	Unknown	Pubs & Full On	Unknown	LE 2 7DP

# CGA LICENCED PREMISES

© 2021 CACI Limited and all other applicable third party notices (CGA) can be found at [www.caci.co.uk/copyrightnotices.pdf](http://www.caci.co.uk/copyrightnotices.pdf)

Area: ATLT\_Merry MonarchLE3 OLP (1 Mile contou  
Base: Great Britain  
Year: 2021

Licence Type	Profile	Per 1000 Pop (Area)	Per 1000 Pop (Base)	Index	0	100	200
Pubs & Full On	71	135.5	84.9	160			
Proprietary Club	6	11.5	8.1	141			
Registered Club	9	17.2	29.9	58			
Restaurant	37	70.6	34.6	204			
Residential	0	0.0	3.5	0			

Name	Description	License Type	Owner Name	Postcode
Sue Townsend Theatre	Independent Free	Pubs & Full On	Independent Free	LE 1 5TE
Audrey	Independent Free	Pubs & Full On	Independent Free	LE 1 4LD
Pho	Pho	Restaurant	Pho	LE 1 4JB
Nine Cafe Bar	Independent Free	Pubs & Full On	Independent Free	LE 3 0BS
Black Ice Wine Bar	Independent Free	Pubs & Full On	Independent Free	LE 3 0BT
West End Brewery	Independent Free	Pubs & Full On	Independent Free	LE 3 5LG
Case Restaurant And Champagne Bar	Independent Free	Restaurant	Independent Free	LE 1 5AW
Dog House Bar	Independent Free	Pubs & Full On	Independent Free	LE 3 5LG
2 Funky Music Cafe	Independent Free	Pubs & Full On	Independent Free	LE 3 5NH
Alino African Restaurant And Bar	Independent Free	Restaurant	Independent Free	LE 3 0LE
Grosvenor Casino	Rank	Proprietary Club	Rank	LE 1 4NN
Efes Mangal Barbeque	Independent Free	Restaurant	Independent Free	LE 3 5LG
Namaste Restaurant	Independent Free	Restaurant	Independent Free	LE 3 0TB
Giggling Squid	Giggling Squid	Restaurant	Giggling Squid	LE 1 5DF
Travelodge	Dubai International Capital	Pubs & Full On	Dubai International Capital	LE 1 4NN
Madeira A Vista	Independent Free	Pubs & Full On	Independent Free	LE 3 5GF
F Bar	Independent Free	Pubs & Full On	Independent Free	LE 2 7LA
Wagamama	Restaurant Group	Restaurant	Restaurant Group	LE 1 4SD
Gadabout	Independent Free	Pubs & Full On	Independent Free	LE 1 5FQ
Cedars	Independent Free	Restaurant	Independent Free	LE 3 0BQ
Yo Sushi	Yo! Sushi	Restaurant	Yo! Sushi	LE 1 4SD
Terracotta Oriental Buffet	Independent Free	Restaurant	Independent Free	LE 1 4PF
City Rooms	Independent Free	Pubs & Full On	Independent Free	LE 1 5AW
Showcase Cinema	National Amusements Inc	Pubs & Full On	National Amusements Inc	LE 1 4SD
Zizzi	Azzurri Group Ltd	Restaurant	Azzurri Group Ltd	LE 1 4SD
Natterjacks	Independent Free	Pubs & Full On	Independent Free	LE 3 5LG
Turtle Bay	Turtle Bay Restaurants	Restaurant	Turtle Bay Restaurants	LE 1 4SA
Nandos	Nandos Restaurants	Restaurant	Nandos Restaurants	LE 1 4FP
Auditorium	Independent Free	Pubs & Full On	Independent Free	LE 1 5GF
Polonez Bar	Independent Free	Pubs & Full On	Independent Free	LE 3 0RB
Forest	Independent Free	Pubs & Full On	Independent Free	LE 3 0LE
Mittas	Independent Free	Restaurant	Independent Free	LE 3 0PA
Lost Bar	Independent Free	Pubs & Full On	Independent Free	LE 3 0PB
Pizza Express	Hony Capital	Restaurant	Hony Capital	LE 1 4SA
2Funky Lounge	Independent Free	Proprietary Club	Independent Free	LE 3 5NH
Leicester Steakhouse	Independent Free	Restaurant	Independent Free	LE 3 0AS
1573 Bar & Grill	Independent Free	Pubs & Full On	Independent Free	LE 1 4FY
Taste Of China	Independent Free	Restaurant	Independent Free	LE 1 4FP
Cookie Jar	Independent Free	Pubs & Full On	Independent Free	LE 1 5YP
Istanbul Restaurant	Independent Free	Restaurant	Independent Free	LE 3 0LE
Bottle Garden	Independent Free	Pubs & Full On	Independent Free	LE 1 5ET
Bankers Club	Independent Free	Pubs & Full On	Independent Free	LE 1 5RA
Frankie & Bennys	Restaurant Group	Restaurant	Restaurant Group	LE 1 4AN
Sardar Restaurant	Independent Free	Restaurant	Independent Free	LE 3 0BQ
Spicy Temptations	Independent Free	Restaurant	Independent Free	LE 1 4NN
Apres Lounge	Independent Free	Pubs & Full On	Independent Free	LE 1 5YP
Mod Pizza	MOD Pizza LLC	Restaurant	MOD Pizza LLC	LE 1 4SA
Cosy Club	Loungers	Pubs & Full On	Loungers	LE 1 4NN
33 Cank Street	Independent Free	Pubs & Full On	Independent Free	LE 1 5GX
Bills	Bills Restaurants	Pubs & Full On	Bills Restaurants	LE 1 4AN
Tgi Fridays	TGI Fridays UK Limited	Restaurant	TGI Fridays UK Limited	LE 1 4SA
45 West Bottle Shop & Bar	Independent Free	Pubs & Full On	Independent Free	LE 1 5AW
Middletons Steak House	Middletons Steak House	Restaurant	Middletons Steak House	LE 1 5DB

# CGA LICENCED PREMISES

© 2021 CACI Limited and all other applicable third party notices (CGA) can be found at [www.caci.co.uk/copyrightnotices.pdf](http://www.caci.co.uk/copyrightnotices.pdf)

Area: ATLT\_Merry MonarchLE3 OLP (1 Mile contou  
Base: Great Britain  
Year: 2021

Licence Type	Profile	Per 1000 Pop (Area)	Per 1000 Pop (Base)	Index	0	100	200
Pubs & Full On	71	135.5	84.9	<b>160</b>			
Proprietary Club	6	11.5	8.1	<b>141</b>			
Registered Club	9	17.2	29.9	58			
Restaurant	37	70.6	34.6	<b>204</b>			
Residential	0	0.0	3.5	0			

Name	Description	License Type	Owner Name	Postcode
Bodega Cantina	Bitters N Twisted	Restaurant	Bitters N Twisted	LE 1 5DF
Wygggeston House	Independent Free	Restaurant	Independent Free	LE 1 5LD
Registry	Independent Free	Pubs & Full On	Independent Free	LE 1 6BT
Sonrisa Comida Argentina	Independent Free	Restaurant	Independent Free	LE 1 5DF
Veenno	Veenno	Pubs & Full On	Veenno	LE 1 5DE
Spirits Bar	Independent Free	Pubs & Full On	Independent Free	LE 1 5AW
Blue Boar	Independent Free	Pubs & Full On	Independent Free	LE 1 5JN
Tonne	Independent Free	Pubs & Full On	Independent Free	LE 1 5DF
Mowgli	Mowgli	Restaurant	Mowgli	LE 1 5DF
Tamatanga	Monaman Restaurants Ltd	Restaurant	Monaman Restaurants Ltd	LE 1 4AN
Novotel	Accor Hotels	Pubs & Full On	Accor Hotels	LE 1 4JS
Treetop Adventure Golf	*Other Small Retail Groups	Pubs & Full On	*Other Small Retail Groups	LE 1 4AN
63Rd And First	Independent Free	Pubs & Full On	Independent Free	LE 1 4NN
Grande Gusto	Independent Free	Restaurant	Independent Free	LE 3 0LE
Lane 7	Lane 7	Proprietary Club	Lane 7	LE 1 4JT
Inside No 9	Independent Free	Pubs & Full On	Independent Free	LE 1 5GG
Ronnie Roos	Independent Free	Pubs & Full On	Independent Free	LE 1 5JN

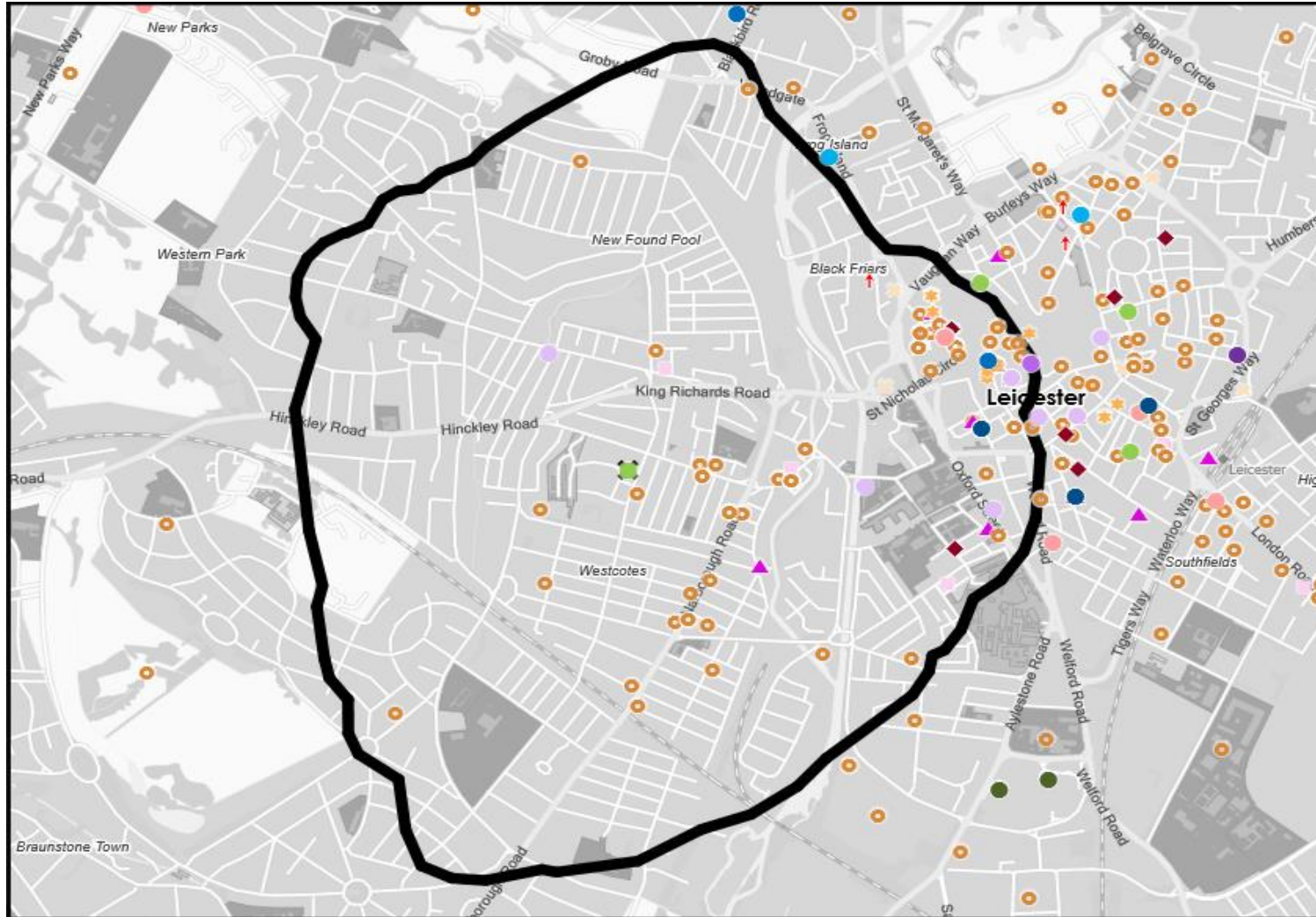


# MAP OF AREA

© 2021 CACI Limited and all other applicable third party notices (CGA) can be found at [www.caci.co.uk/copyrightnotices.pdf](http://www.caci.co.uk/copyrightnotices.pdf)

Source: OS Open Data 2018

Area: ATLT\_Merry MonarchLE3 OLP (1 Mile contour)



## KEY

### Large pub co's & bars

- Admiral Taverns Ltd
- Ei Group
- Greene King
- Marston's
- Mitchells & Butlers
- Punch Pub Company
- Stonegate Pub Company
- Star Pubs & Bars
- Wetherspoon
- Whitbread
- Shepherd Neame

### Small to medium pub co's & bars

- Family Brewers with pubs

- ✕ Hotels

- ★ Restaurants

- ↑ Leisure

- Independent

- ◆ Other

- ✕ Site Location

- Boundary