

CGA LICENCED PREMISES

© 2024 CACI Limited and all other applicable third party notices (CGA) can be found at www.caci.co.uk/copyrightnotices.pdf

Area: P04438_Warrington Arms, Ashton Under Ly
 Base: Great Britain
 Year: 2023

Licence Type	Profile	Per 1000 Pop (Area)	Per 1000 Pop (Base)	Index	0	100	200
Pubs & Full On	56	147.5	81.7	181			
Proprietary Club	6	15.8	7.3	217			
Registered Club	12	31.6	28.2	112			
Restaurant	10	26.3	32.1	82			
Residential	0	0.0	2.7	0			

Name	Description	License Type	Owner Name	Postcode
Alexandra	Independent Free	Registered Club	Independent Free	OL 6 7DY
San Rocco	San Rocco	Restaurant	San Rocco	OL 6 6QW
Feathers Hotel	*Other Small Retail Groups	Pubs & Full On	*Other Small Retail Groups	OL 6 6AD
Station	Independent Free	Pubs & Full On	Independent Free	OL 6 6XB
Ladysmith	Stonegate Pub Company	Pubs & Full On	Stonegate Pub Company	OL 6 6DD
Prince Of Orange	Robinsons	Pubs & Full On	Robinsons	OL 6 6DW
Bowling Green	Admiral Taverns Ltd	Pubs & Full On	Admiral Taverns Ltd	OL 6 6EP
New Inn	Admiral Taverns Ltd	Pubs & Full On	Admiral Taverns Ltd	OL 6 6ND
Miners Arms	Admiral Taverns Ltd	Pubs & Full On	Admiral Taverns Ltd	OL 6 6NE
Warrington Arms	Admiral Taverns Ltd	Pubs & Full On	Admiral Taverns Ltd	OL 6 6QR
White Horse	Star Pubs & Bars	Pubs & Full On	Star Pubs & Bars	OL 6 6QW
Sycamore Inn	Robinsons	Pubs & Full On	Robinsons	OL 6 6QX
Number Fifteen	Independent Free	Pubs & Full On	Independent Free	OL 6 6AQ
Beau Geste	Stonegate Pub Company	Pubs & Full On	Stonegate Pub Company	OL 6 7AE
Fat Lenny's Saloon	Independent Free	Pubs & Full On	Independent Free	OL 6 7AP
Ash Tree	Wetherspoons GB	Pubs & Full On	Wetherspoons GB	OL 6 6DA
Foresters Call	Independent Free	Pubs & Full On	Independent Free	OL 6 7SQ
Star Inn	*Other Small Retail Groups	Pubs & Full On	*Other Small Retail Groups	OL 6 7SD
Witchwood	Independent Free	Pubs & Full On	Independent Free	OL 6 7SF
Hare & Hounds	*Other Small Retail Groups	Pubs & Full On	*Other Small Retail Groups	OL 6 8HD
Ashton United Football Club	Independent Free	Registered Club	Independent Free	OL 6 8DY
Heroes Of Waterloo	*Other Small Retail Groups	Pubs & Full On	*Other Small Retail Groups	OL 6 9DQ
Halfway House	*Other Small Retail Groups	Pubs & Full On	*Other Small Retail Groups	OL 6 9PS
La Lupa	Independent Free	Restaurant	Independent Free	SK15 1JP
Lancashire Ward No2 Conservative Club	Independent Free	Registered Club	Independent Free	SK15 1JZ
Ridgehill Working Mens Club	Independent Free	Registered Club	Independent Free	SK15 1NF
Fox Tavern	Daniel Thwaites plc	Pubs & Full On	Daniel Thwaites plc	SK15 1NQ
Wharf Tavern	Independent Free	Pubs & Full On	Independent Free	SK15 1PD
Legendz	Unknown	Pubs & Full On	Unknown	SK15 1RR
Astley Arms	Red Oak Taverns	Pubs & Full On	Red Oak Taverns	SK15 1TF
Cosmos Bingo & Social Club	Independent Free	Proprietary Club	Independent Free	SK15 2AB
White House	Hydes Anvil	Pubs & Full On	Hydes Anvil	SK15 2AG
Khaleasi	Independent Free	Proprietary Club	Independent Free	SK15 2AJ
Q Inn	Hydes Anvil	Pubs & Full On	Hydes Anvil	SK15 2AL
Old Fleece	*Other Small Retail Groups	Pubs & Full On	*Other Small Retail Groups	SK15 2AL
Old Thirteenth Cheshire Astley Volunte	Independent Free	Pubs & Full On	Independent Free	SK15 2AL
Station Buffet Bar	Independent Free	Pubs & Full On	Independent Free	SK15 1RF
Lord Stamford	Amber Taverns	Pubs & Full On	Amber Taverns	SK15 2DX
Staleyward No2 Conservative Club	Independent Free	Registered Club	Independent Free	SK15 2JL
St Peters Social Club	Independent Free	Registered Club	Independent Free	SK15 2JL
Wheatsheaf Inn	Marston's	Pubs & Full On	Marston's	SK16 4AJ
Astley Arms	Robinsons	Pubs & Full On	Robinsons	SK16 4BT
Dukinfield Masonic Club	Independent Free	Registered Club	Independent Free	SK16 4EN
Commercial	Admiral Taverns Ltd	Pubs & Full On	Admiral Taverns Ltd	SK16 4JU
Pyramid Snooker Club	Independent Free	Proprietary Club	Independent Free	SK16 4NQ
Dukinfield Cricket Club	Independent Free	Registered Club	Independent Free	SK16 4LP
Angel Inn	*Other Small Retail Groups	Pubs & Full On	*Other Small Retail Groups	SK16 4TH
Forester	Star Pubs & Bars	Pubs & Full On	Star Pubs & Bars	SK16 5EW
Stalybridge & Dukinfield Bowling Club	Independent Free	Registered Club	Independent Free	SK16 5JP
Lodge Hotel	Admiral Taverns Ltd	Pubs & Full On	Admiral Taverns Ltd	SK16 5JY
Tame Valley Hotel	Independent Free	Pubs & Full On	Independent Free	SK16 5LX
Masons Arms	Independent Free	Pubs & Full On	Independent Free	SK16 5NT
Albion Hotel	Robinsons	Pubs & Full On	Robinsons	SK16 4BZ

CGA LICENCED PREMISES

© 2024 CACI Limited and all other applicable third party notices (CGA) can be found at www.caci.co.uk/copyrightnotices.pdf

Area: P04438_Warrington Arms, Ashton Under Ly
 Base: Great Britain
 Year: 2023

Licence Type	Profile	Per 1000 Pop (Area)	Per 1000 Pop (Base)	Index	0	100	200
Pubs & Full On	56	147.5	81.7	181			
Proprietary Club	6	15.8	7.3	217			
Registered Club	12	31.6	28.2	112			
Restaurant	10	26.3	32.1	82			
Residential	0	0.0	2.7	0			

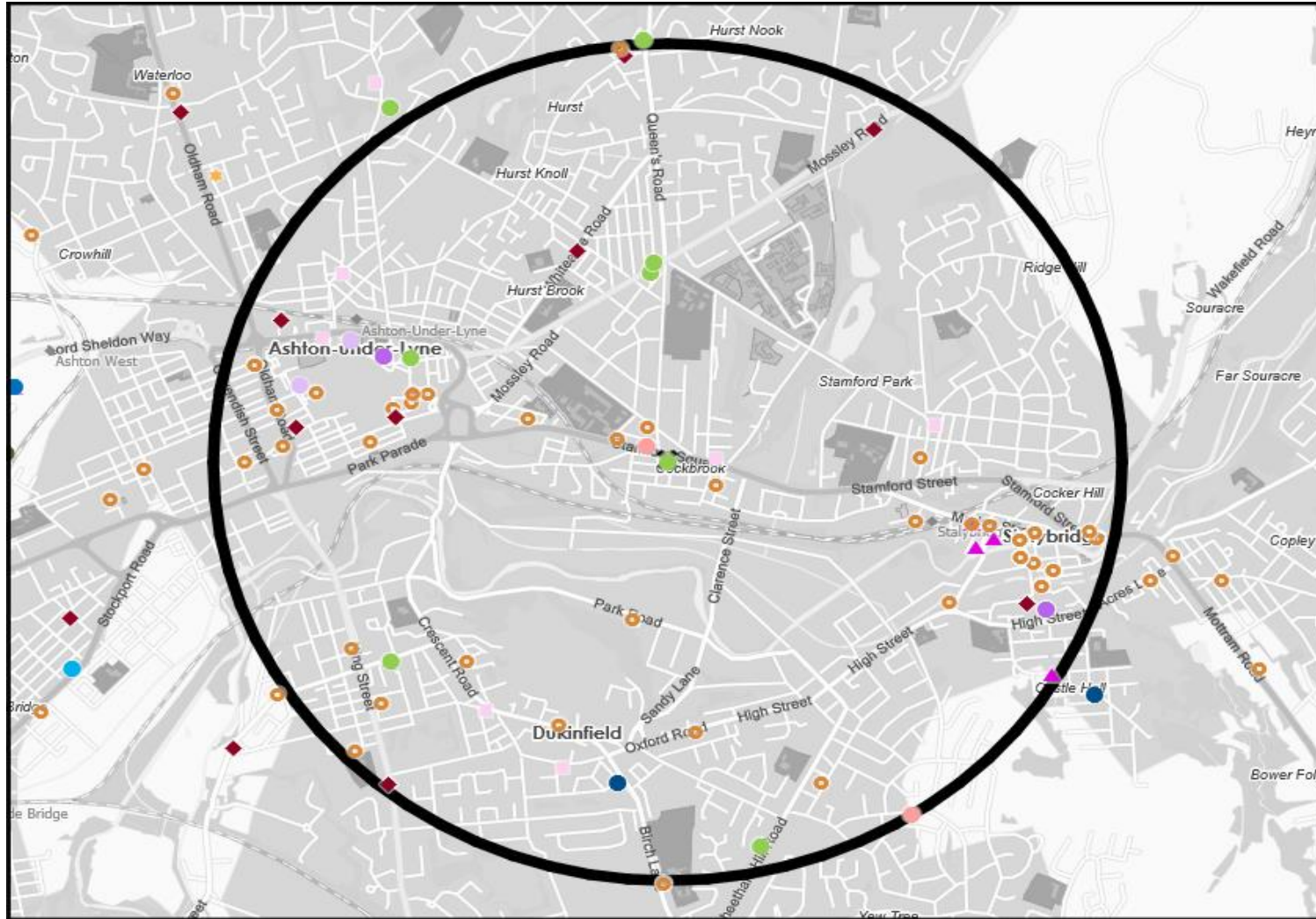
Name	Description	License Type	Owner Name	Postcode
Mynt	Unknown	Proprietary Club	Unknown	OL 6 6LB
Beaconsfield Conservative Club	Independent Free	Registered Club	Independent Free	OL 6 6QL
Ashton Cricket Bowling Club	Independent Free	Registered Club	Independent Free	OL 6 6RU
Indian Ocean	Independent Free	Restaurant	Independent Free	OL 6 6QH
Junction Inn	Robinsons	Pubs & Full On	Robinsons	OL 6 8LP
Theatre Tavern	Independent Free	Pubs & Full On	Independent Free	OL 6 7AP
Bridge Inn	Dukedom Ltd	Pubs & Full On	Dukedom Ltd	SK15 2AH
Tameside College Of Tech	Independent Free	Registered Club	Independent Free	OL 6 6PJ
Dukinfield Town Hall	Independent Free	Pubs & Full On	Independent Free	SK16 4LA
Herb & Spice	Independent Free	Restaurant	Independent Free	SK16 5PN
Gala Bingo	Gala Group	Proprietary Club	Gala Group	OL 6 6DJ
Society Rooms	Wetherspoons GB	Pubs & Full On	Wetherspoons GB	SK15 2JN
Top End Bar	Unknown	Pubs & Full On	Unknown	OL 6 6AD
Judges Bar	Independent Free	Pubs & Full On	Independent Free	SK15 2JE
Bohemian Lounge	Independent Free	Pubs & Full On	Independent Free	SK15 2JN
Zeros	Independent Free	Pubs & Full On	Independent Free	SK15 2AA
Staly Vegas Pool Bar & Snooker Club	Independent Free	Proprietary Club	Independent Free	SK15 2JN
Sykes	Independent Free	Pubs & Full On	Independent Free	SK15 2AB
Phoenix City	Independent Free	Restaurant	Independent Free	SK15 1NX
Jade Garden	Independent Free	Restaurant	Independent Free	OL 6 6HA
Vevas Indo Bistro	Independent Free	Restaurant	Independent Free	SK15 1NX
Back To The 80's	Independent Free	Pubs & Full On	Independent Free	SK15 2AA
Bridge Beers	Independent Free	Pubs & Full On	Independent Free	SK15 2JJ
Tapsters	Independent Free	Pubs & Full On	Independent Free	OL 6 6LA
Crafty Pint	Independent Free	Pubs & Full On	Independent Free	SK15 2JJ
Deli Felice	Independent Free	Restaurant	Independent Free	SK15 2AA
Rosie's Coffee Bar And Kitchen	Independent Free	Pubs & Full On	Independent Free	OL 6 7JJ
Lily's Indian Vegetarian Cuisine	Independent Free	Restaurant	Independent Free	OL 6 7DY
Florence & Amelia's	Independent Free	Pubs & Full On	Independent Free	SK15 2JL
Gladstone Barber & Bistro	Independent Free	Restaurant	Independent Free	SK15 1NX
Heavenlys Bar	Independent Free	Pubs & Full On	Independent Free	OL 6 6LB

MAP OF AREA

© 2024 CACI Limited and all other applicable third party notices (CGA) can be found at www.caci.co.uk/copyrightnotices.pdf

Source: OS Open Data 2018

Area: P04438_Warrington Arms, Ashton Under Lyne, OL6 6QR (1 Mile contour)



KEY

- Large pub co's & bars
 - Admiral Taverns Ltd
 - Ei Group
 - Greene King
 - Marston's
 - Mitchells & Butlers
 - Punch Pub Company
 - Stonegate Pub Company
 - Star Pubs & Bars
 - Wetherspoon
 - Whitbread
 - Shepherd Neame
- Small to medium pub co's & bars
- Family Brewers with pubs
- Hotels
- Restaurants
- Leisure
- Independent
- Other
- Site Location
- Boundary

ACORN CATEGORY PROFILE - HOUSEHOLDS

© 2024 CACI Limited and all other applicable third party notices (Acorn) can be found at www.caci.co.uk/copyrightnotices.pdf

Area: P04438_Warrington Arms, Ashton Under Lyne, OL6 6QR (1 Mile contour)
Base: Great Britain
Year: 2023

Acorn Category Description	Area Profile	% for Area	% for Base	Index 0	100	200
1 Affluent Achievers	578	3.3	22.1	15		
2 Rising Prosperity	43	0.2	10.2	2		
3 Comfortable Communities	2,983	17.2	26.5	65		
4 Financially Stretched	5,141	29.7	23.7	125		
5 Urban Adversity	8,517	49.2	17.2	286		
6 Not Private Households	40	0.2	0.3	67		
Total households	17,302					



- 1 Affluent Achievers
- 2 Rising Prosperity
- 3 Comfortable Communities
- 4 Financially Stretched
- 5 Urban Adversity
- 6 Not Private Households

Graph

Acorn Category Pen Portrait

5 Urban Adversity

Age range

25-34

House type

Flat or terraced

UK Adults

8.4M

15.9% of UK

Financial situation

House tenure

Social renting

Children at home

3+

Number of beds

1-2

This category contains the most deprived areas of towns and cities across the UK. Household incomes are low, nearly always below the national average.

Acorn Groups within Category 5: Urban Adversity

- O Young Hardship 32%
- P Struggling Estates 41%
- Q Difficult Circumstances 27%

ACORN GROUP PROFILE - HOUSEHOLDS

© 2024 CACI Limited and all other applicable third party notices (Acorn) can be found at www.caci.co.uk/copyrightnotices.pdf

Area: P04438_Warrington Arms, Ashton Under Lyne, OL6 6QR (1 Mile contour)
Base: Great Britain
Year: 2023

Acorn Group Description	Area Profile	% for Area	% for Base	Index 0	100	200
1. Affluent Achievers						
1.A Lavish Lifestyles	0	0.0	1.1	0		
1.B Executive Wealth	152	0.9	11.3	8		
1.C Mature Money	426	2.5	9.6	26		
2. Rising Prosperity						
2.D City Sophisticates	0	0.0	3.8	0		
2.E Career Climbers	43	0.2	6.4	4		
3. Comfortable Communities						
3.F Countryside Communities	0	0.0	5.7	0		
3.G Successful Suburbs	460	2.7	6.0	45		
3.H Steady Neighbourhoods	1,375	7.9	7.4	107		
3.I Comfortable Seniors	176	1.0	2.9	36		
3.J Starting Out	972	5.6	4.6	123		
4. Financially Stretched						
4.K Student Life	37	0.2	2.5	9		
4.L Modest Means	2,137	12.4	8.0	155		
4.M Striving Families	1,541	8.9	7.4	120		
4.N Poorer Pensioners	1,426	8.2	5.8	143		
5. Urban Adversity						
5.O Young Hardship	5,112	29.5	6.3	473		
5.P Struggling Estates	951	5.5	5.7	96		
5.Q Difficult Circumstances	2,454	14.2	5.2	271		
6. Not Private Households						
6.R Not Private Households	40	0.2	0.3	67		
Total households	17,302					

Acorn Group Pen Portrait

6 Not Private Households
790k 1.5%

UK Adults of UK

60 Active communal population –
 Generally this is accommodation that may be unoccupied for part of the year, or where the people living in the accommodation regularly change. Other active communal accommodation might include hostels, children’s homes, refuges and local authority accommodation for travellers.

61 Inactive communal population –
 These people may be in communal establishments but unlikely to be active consumers. This includes care homes, hospitals, and other medical or nursing establishments where due to their health, the residents are unlikely to get out and about to function as regular consumers. It also includes prisons.

62 Business areas without resident population –
 These are postcodes where we believe there is no regular resident population. An example of this might be a business or industrial park.

These are postcodes where the bulk of the residents are not living in private households.

The category forms a single group, R: Not private households, which is sub-divided into three types:

A
B
C
D
E
F
G
H
I
J
K
L
M
N
O
P
Q
R

CATEGORY	GROUP	TYPE	MAP	WHAT IS ACORN?
----------	-------	------	-----	----------------

ACORN TYPE PROFILE - HOUSEHOLDS

© 2024 CACI Limited and all other applicable third party notices (Acorn) can be found at www.caci.co.uk/copyrightnotices.pdf

Area: P04438_Warrington Arms, Ashton Under Lyne, OL6 6QR (1 Mile contour)
 Base: Great Britain
 Year: 2023

Sort by: Corn Structure
 Index
 Profile %

Acorn Type Description	Area Profile	% for Area	% for Base	Index	0	100	200
1. Affluent Achievers							
1.A Lavish Lifestyles							
1.A.1 Exclusive enclaves	0	0.0	0.1	0			
1.A.2 Metropolitan money	0	0.0	0.1	0			
1.A.3 Large house luxury	0	0.0	0.9	0			
1.B Executive Wealth							
1.B.4 Asset rich families	50	0.3	2.6	11			
1.B.5 Wealthy countryside commuters	0	0.0	2.5	0			
1.B.6 Financially comfortable families	78	0.5	2.2	20			
1.B.7 Affluent professionals	0	0.0	0.9	0			
1.B.8 Prosperous suburban families	24	0.1	1.5	9			
1.B.9 Well-off edge of towners	0	0.0	1.6	0			
1.C Mature Money							
1.C.10 Better-off villagers	0	0.0	3.1	0			
1.C.11 Settled suburbia, older people	381	2.2	2.8	78			
1.C.12 Retired and empty nesters	45	0.3	2.5	11			
1.C.13 Upmarket downsizers	0	0.0	1.3	0			
2. Rising Prosperity							
2.D City Sophisticates							
2.D.14 Townhouse cosmopolitans	0	0.0	0.7	0			
2.D.15 Younger professionals in smaller flats	0	0.0	1.5	0			
2.D.16 Metropolitan professionals	0	0.0	0.7	0			
2.D.17 Socialising young renters	0	0.0	1.0	0			
2.E Career Climbers							
2.E.18 Career driven young families	23	0.1	2.0	7			
2.E.19 First time buyers in small, modern homes	20	0.1	3.4	3			
2.E.20 Mixed metropolitan areas	0	0.0	1.0	0			
3. Comfortable Communities							
3.F Countryside Communities							
3.F.21 Farms and cottages	0	0.0	1.5	0			
3.F.22 Older couples and families in rural areas	0	0.0	1.0	0			
3.F.23 Owner occupiers in small towns and villages	0	0.0	3.2	0			
3.G Successful Suburbs							
3.G.24 Comfortably-off families in modern housing	437	2.5	2.7	94			
3.G.25 Larger family homes, multi-ethnic areas	6	0.0	0.8	4			
3.G.26 Semi-professional families, owner occupied neighbourhoods	17	0.1	2.4	4			
3.H Steady Neighbourhoods							
3.H.27 Suburban semis, conventional attitudes	1,065	6.2	3.5	178			
3.H.28 Owner occupied terraces, average income	85	0.5	1.6	31			
3.H.29 Established suburbs, older families	225	1.3	2.3	56			
3.I Comfortable Seniors							
3.I.30 Older people, neat and tidy neighbourhoods	176	1.0	2.4	43			
3.I.31 Elderly singles in purpose-built accommodation	0	0.0	0.5	0			
3.J Starting Out							
3.J.32 Educated families in terraces, young children	669	3.9	2.2	180			
3.J.33 Smaller houses and starter homes	303	1.8	2.4	73			
4. Financially Stretched							
4.K Student Life							
4.K.34 Student flats and halls of residence	0	0.0	0.3	0			
4.K.35 Term-time terraces	0	0.0	0.2	0			
4.K.36 Educated young people in flats and tenements	37	0.2	1.9	11			
4.L Modest Means							
4.L.37 Low cost flats in suburban areas	272	1.6	1.4	109			
4.L.38 Semi-skilled workers in traditional neighbourhoods	541	3.1	2.6	119			
4.L.39 Fading owner occupied terraces	1,183	6.8	2.9	234			
4.L.40 High occupancy terraces, culturally diverse family areas	141	0.8	1.0	82			
4.M Striving Families							
4.M.41 Labouring semi-rural estates	0	0.0	1.6	0			
4.M.42 Struggling young families in post-war terraces	135	0.8	1.6	48			
4.M.43 Families in right-to-buy estates	729	4.2	2.0	207			
4.M.44 Post-war estates, limited means	677	3.9	2.2	180			
4.N Poorer Pensioners							
4.N.45 Pensioners in social housing, semis and terraces	162	0.9	0.8	119			
4.N.46 Elderly people in social rented flats	332	1.9	1.0	186			
4.N.47 Low income older people in smaller semis	301	1.7	2.2	78			
4.N.48 Pensioners and singles in social rented flats	631	3.6	1.7	214			
5. Urban Adversity							
5.O Young Hardship							
5.O.49 Young families in low cost private flats	878	5.1	2.2	232			
5.O.50 Struggling younger people in mixed tenure	876	5.1	1.8	281			
5.O.51 Young people in small, low cost terraces	3,358	19.4	2.3	857			
5.P Struggling Estates							
5.P.52 Poorer families, many children, terraced housing	484	2.8	1.6	179			
5.P.53 Low income terraces	0	0.0	0.8	0			
5.P.54 Multi-ethnic, purpose-built estates	0	0.0	1.0	0			
5.P.55 Deprived and ethnically diverse in flats	0	0.0	0.7	0			
5.P.56 Low income large families in social rented semis	467	2.7	1.6	169			
5.Q Difficult Circumstances							
5.Q.57 Social rented flats, families and single parents	215	1.2	1.5	82			
5.Q.58 Singles and young families, some receiving benefits	836	4.8	1.8	274			
5.Q.59 Deprived areas and high-rise flats	1,403	8.1	2.0	412			
6. Not Private Households							
6.R Not Private Households							
6.R.60 Active communal population	9	0.1	0.1	88			
6.R.61 Inactive communal population	31	0.2	0.3	63			
6.R.62 Business areas without resident population	0	0	0	0			
Total households	17,302						

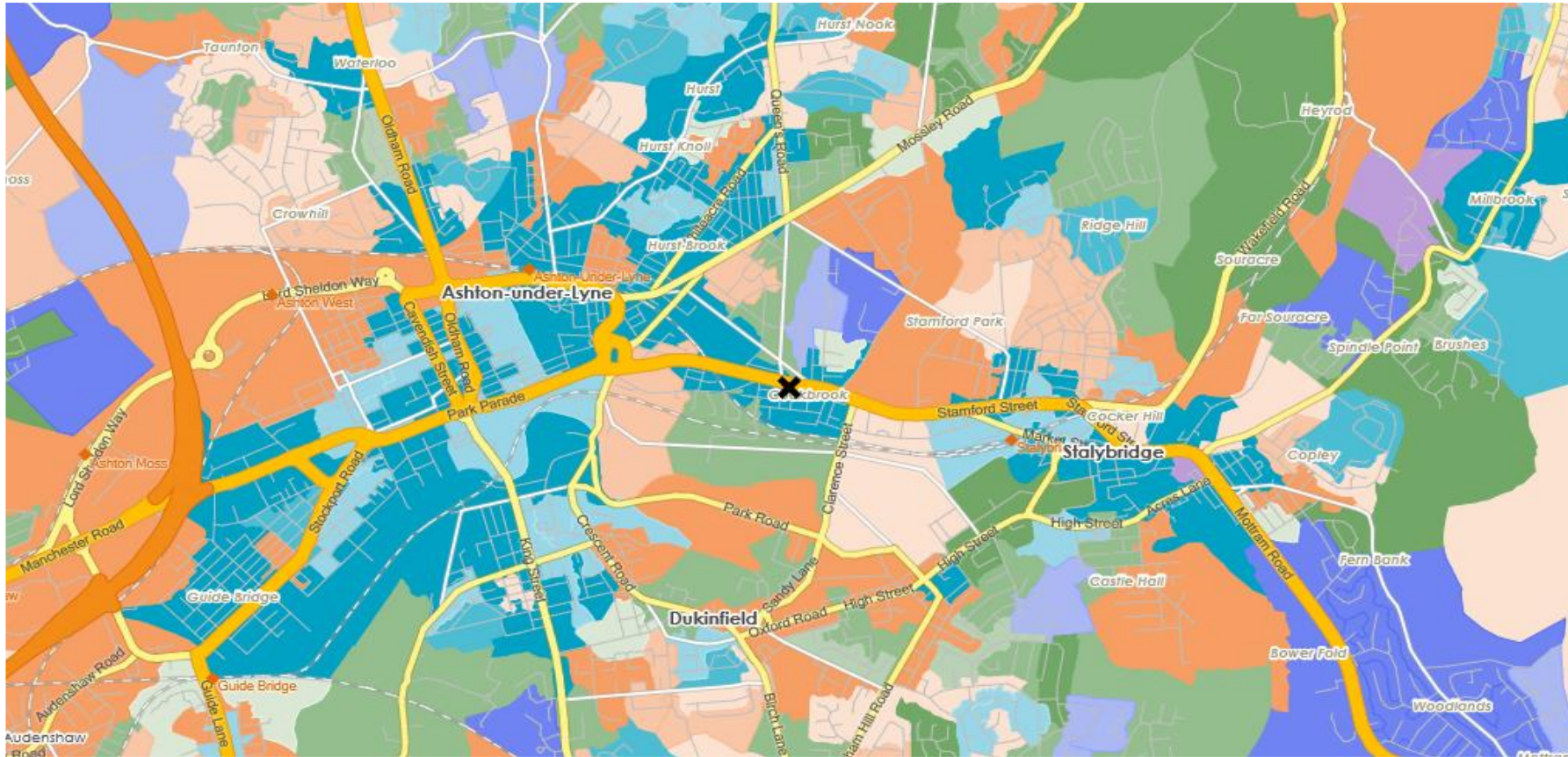
CATEGORY GROUP TYPE **MAP** WHAT IS ACORN?

DOMINANT ACORN GROUP - HOUSEHOLDS

© 2024 CACI Limited and all other applicable third party notices (Acorn) can be found at www.caci.co.uk/copyrightnotices.pdf

Source: OS Open Data 2018

Area: P04438_Warrington Arms, Ashton Under Lyne, OL6 6QR (1 Mile contour)



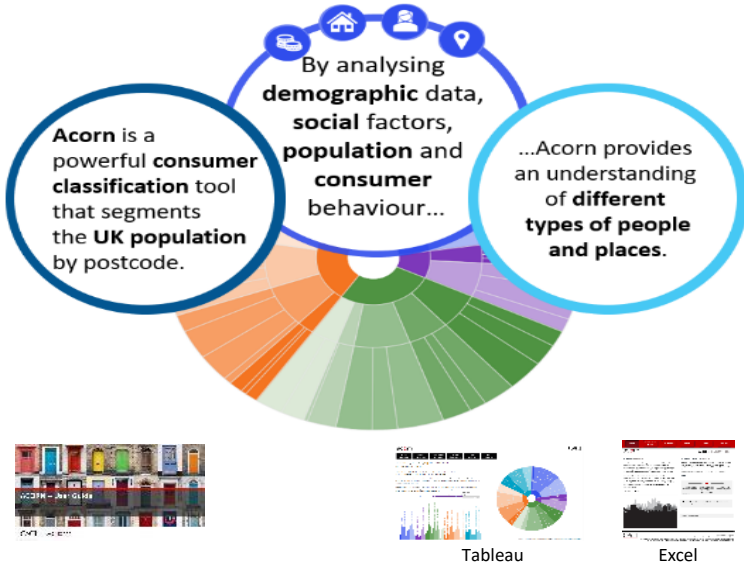
- Dominant Acorn Category
- % Affluent Achievers
- % Rising Prosperity
- % Comfortable Communities
- % Financially Stretched
- % Urban Adversity
- Dominant Acorn Group

- Acorn Groups**
- 1.A Lavish Lifestyles
 - 1.B Executive Wealth
 - 1.C Mature Money
 - 2.D City Sophisticates
 - 2.E Career Climbers
 - 3.F Countryside Communities
 - 3.G Successful Suburbs
 - 3.H Steady Neighbourhoods
 - 3.I Comfortable Seniors
 - 3.J Starting Out
 - 4.K Student Life
 - 4.L Modest Means
 - 4.M Striving Families
 - 4.N Poorer Pensioners
 - 5.O Young Hardship
 - 5.P Struggling Estates
 - 5.Q Difficult Circumstances
 - 6.R Not Private Households

Area boundary

ACORN - WHAT IS IT?

© 2024 CACI Limited and all other applicable third party notices (Acorn) can be found at www.caci.co.uk/copyrightnotices.pdf



6 CATEGORIES 18 GROUPS 62 TYPES

1. Affluent Achievers	A. Lavish Lifestyles	1-3
	B. Executive Wealth	4-9
	C. Mature Money	10-13
2. Rising Prosperity	D. City Sophisticates	14-17
	E. Career Climbers	18-20
3. Comfortable Communities	F. Countryside Communities	21-23
	G. Successful Suburbs	24-26
	H. Steady Neighbourhoods	27-29
	I. Comfortable Seniors	30-31
	J. Starting Out	32-33
4. Financially Stretched	K. Student Life	34-36
	L. Modest Means	37-40
	M. Striving Families	41-44
	N. Poorer Pensioners	45-48
5. Urban Adversity	O. Young Hardship	49-51
	P. Struggling Estates	52-56
	Q. Difficult Circumstances	57-59
6. Not Private Households	R. Not Private Households	60-62

1 Affluent Achievers

Age range: **55+**

Financial situation: Running into debt ↔ Saving a lot

Children at home: **0**

12.1M UK Adults

22.8% of UK

House type: **Detached**

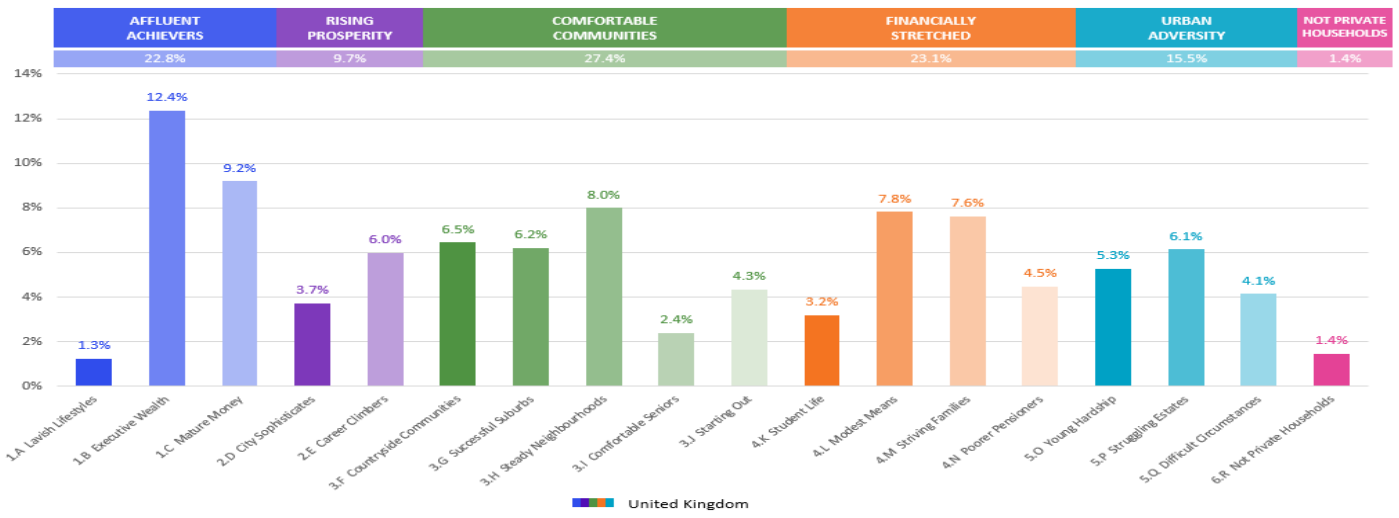
House tenure: **Owned outright**

Number of beds: **4+**

These are some of the most financially successful people in the UK. They live in affluent, high status areas of the country. They are healthy, wealthy and confident consumers.

Acorn Groups within Category 1: Affluent Achievers

- A. Lavish Lifestyles: 6%
- B. Executive Wealth: 54%
- C. Mature Money: 40%



MAP OF AREA

© 2024 CACI Limited and all other applicable third party notices can be found at www.caci.co.uk/copyrightnotices.pdf

Source: OS Open Data 2018

Area: P04438_Warrington Arms, Ashton Under Lyne, OL6 6QR (1 Mile contour)

