

# CGA LICENCED PREMISES

© 2021 CACI Limited and all other applicable third party notices (CGA) can be found at [www.caci.co.uk/copyrightnotices.pdf](http://www.caci.co.uk/copyrightnotices.pdf)

Area: ATLT\_AlexandraBB3 1NL (0.62 Mile contour)

Base: Great Britain

Year: 2021

Licence Type	Profile	Per 1000 Pop (Area)	Per 1000 Pop (Base)	Index	0	100	200
Pubs & Full On	12	160.0	84.9	<b>188</b>			
Proprietary Club	3	40.0	8.1	<b>492</b>			
Registered Club	2	26.7	29.9	89			
Restaurant	5	66.7	34.6	<b>193</b>			
Residential	0	0.0	3.5	0			

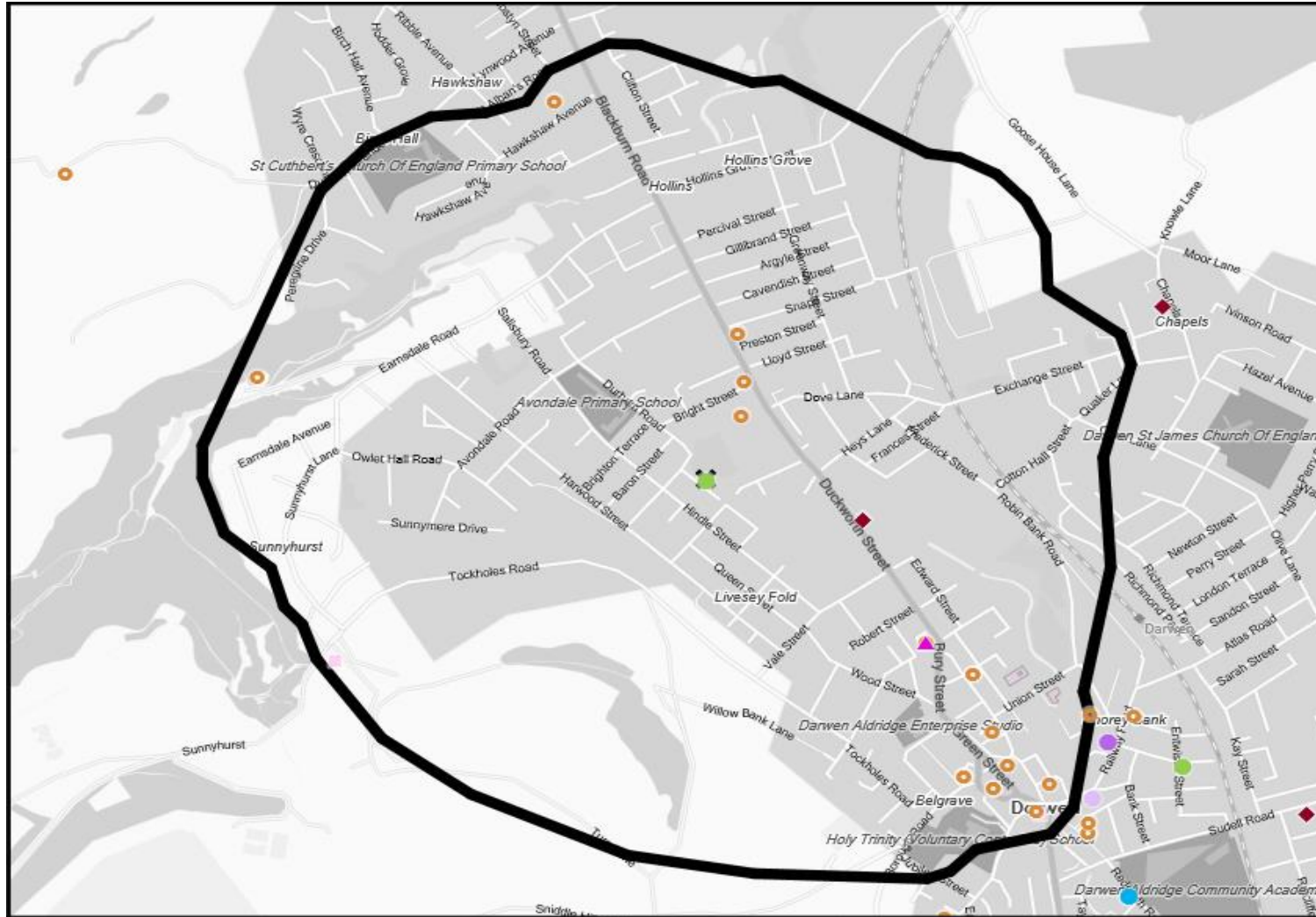
Name	Description	License Type	Owner Name	Postcode
Olde England Kiosk	Independent Free	Pubs & Full On	Independent Free	BB 3 0LA
Big House Blues Bar	Independent Free	Pubs & Full On	Independent Free	BB 3 1PU
British Queen Hotel	Unknown	Pubs & Full On	Unknown	BB 3 1AT
Sunnyhurst Hotel	Daniel Thwaites plc	Pubs & Full On	Daniel Thwaites plc	BB 3 1JX
Alexandra	Admiral Taverns Ltd	Pubs & Full On	Admiral Taverns Ltd	BB 3 1NL
Level One Nightclub	Independent Free	Proprietary Club	Independent Free	BB 3 1PS
Essence Mediterranean Restaurant & Bar	Independent Free	Pubs & Full On	Independent Free	BB 3 1PW
Akash Indian Restaurant	Independent Free	Restaurant	Independent Free	BB 3 1PX
Anaz Restaurant	Independent Free	Restaurant	Independent Free	BB 3 1QE
Hollins Grove Conservative Club	Independent Free	Registered Club	Independent Free	BB 3 1QJ
Darwen Masonic Club	Independent Free	Registered Club	Independent Free	BB 3 1QZ
Darwen Leisure Centre	Independent Free	Proprietary Club	Independent Free	BB 3 1PW
Millstone	Daniel Thwaites plc	Pubs & Full On	Daniel Thwaites plc	BB 3 1BT
Cock	Amber Taverns	Pubs & Full On	Amber Taverns	BB 3 1PX
Amalfi Lounge & Cocktail Bar	Independent Free	Restaurant	Independent Free	BB 3 1AU
H2O Bar	Independent Free	Proprietary Club	Independent Free	BB 3 1BG
Ripasso	Independent Free	Restaurant	Independent Free	BB 3 1PW
Darwen Tap	Independent Free	Pubs & Full On	Independent Free	BB 3 1EJ
Papas American Diner	Independent Free	Restaurant	Independent Free	BB 3 1AU
Vaults Bar	Independent Free	Pubs & Full On	Independent Free	BB 3 1PL
Sunbird Records	Independent Free	Pubs & Full On	Independent Free	BB 3 1BS
Spitfire Sports Bar	Independent Free	Pubs & Full On	Independent Free	BB 3 1PL

# MAP OF AREA

© 2021 CACI Limited and all other applicable third party notices (CGA) can be found at [www.caci.co.uk/copyrightnotices.pdf](http://www.caci.co.uk/copyrightnotices.pdf)

Source: OS Open Data 2018

Area: ATLT\_AlexandraBB3 1NL (0.62 Mile contour)



## KEY

### Large pub co's & bars

- Admiral Taverns Ltd
- Ei Group
- Greene King
- Marston's
- Mitchells & Butlers
- Punch Pub Company
- Stonegate Pub Company
- Star Pubs & Bars
- Wetherspoon
- Whitbread
- Shepherd Neame

### Small to medium pub co's & bars

- ▲ Family Brewers with pubs

- ✕ Hotels
- ★ Restaurants
- ▲ Leisure
- Independent
- ◆ Other

- ✕ Site Location
- Boundary

CATEGORY

GROUP

TYPE

MAP

WHAT IS ACORN?

## ACORN CATEGORY PROFILE - HOUSEHOLDS

© 2021 CACI Limited and all other applicable third party notices (Acorn) can be found at [www.caci.co.uk/copyrightnotices.pdf](http://www.caci.co.uk/copyrightnotices.pdf)

Area: ATLT\_AlexandraBB3 1NL (0.62 Mile contour)

Base: Great Britain

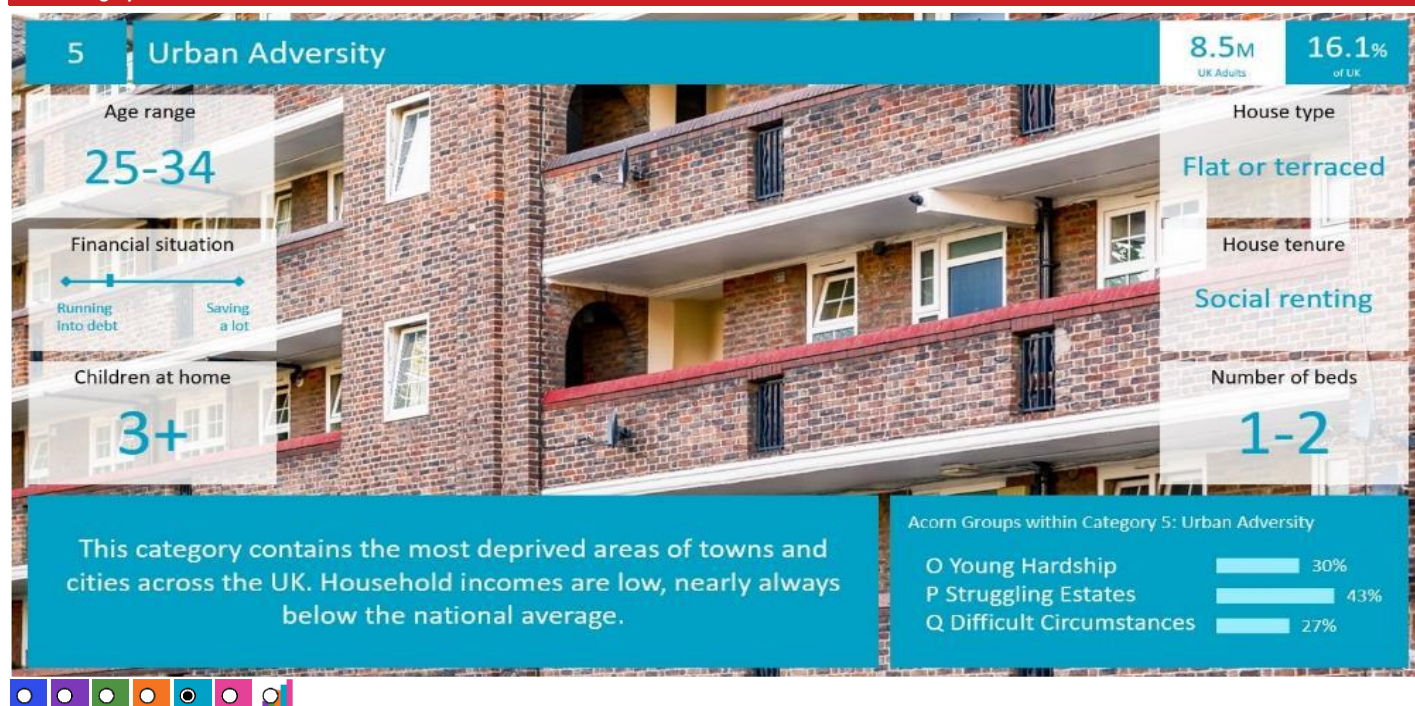
Year: 2021

Acorn Category Description	Area Profile	% for Area	% for Base	Index	0	100	200
1 Affluent Achievers	303	9.2	22.0	42			
2 Rising Prosperity	0	0.0	10.1	0			
3 Comfortable Communities	463	14.1	26.2	54			
4 Financially Stretched	1,028	31.3	23.7	132			
5 Urban Adversity	1,472	44.8	17.6	255			
6 Not Private Households	17	0.5	0.3	155			
Total households		3,283					



Graph

## Acorn Category Pen Portrait



CATEGORY

GROUP

TYPE

MAP

WHAT IS ACORN?

## ACORN GROUP PROFILE - HOUSEHOLDS

© 2021 CACI Limited and all other applicable third party notices (Acorn) can be found at [www.caci.co.uk/copyrightnotices.pdf](http://www.caci.co.uk/copyrightnotices.pdf)

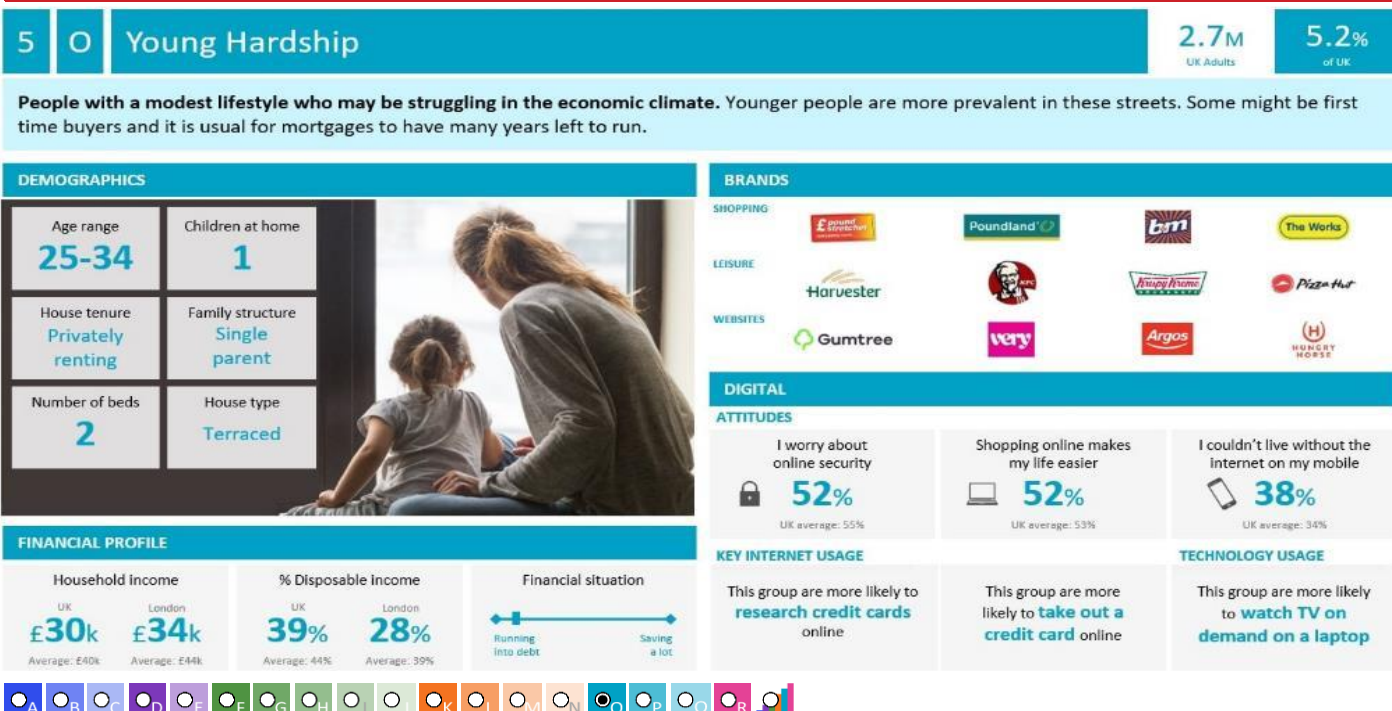
Area: ATLT\_AlexandraBB3 1NL (0.62 Mile contour)

Base: Great Britain

Year: 2021

Acorn Group Description	Area Profile	% for Area	% for Base	Index	0	100	200
<b>1. Affluent Achievers</b>							
1.A Lavish Lifestyles	0	0.0	1.1	0			
1.B Executive Wealth	122	3.7	11.2	33			
1.C Mature Money	181	5.5	9.6	57			
<b>2. Rising Prosperity</b>							
2.D City Sophisticates	0	0.0	4.0	0			
2.E Career Climbers	0	0.0	6.2	0			
<b>3. Comfortable Communities</b>							
3.F Countryside Communities	19	0.6	5.7	10			
3.G Successful Suburbs	323	9.8	5.9	167			
3.H Steady Neighbourhoods	29	0.9	7.4	12			
3.I Comfortable Seniors	21	0.6	2.9	22			
3.J Starting Out	71	2.2	4.3	50			
<b>4. Financially Stretched</b>							
4.K Student Life	0	0.0	2.4	0			
4.L Modest Means	858	26.1	7.9	330			
4.M Striving Families	73	2.2	7.5	29			
4.N Poorer Pensioners	97	3.0	5.9	50			
<b>5. Urban Adversity</b>							
5.O Young Hardship	1,363	41.5	6.1	675			
5.P Struggling Estates	47	1.4	6.1	23			
5.Q Difficult Circumstances	62	1.9	5.3	35			
<b>6. Not Private Households</b>							
6.R Not Private Households	17	0.5	0.3	155			
<b>Total households</b>	<b>3,283</b>						

## Acorn Group Pen Portrait





CATEGORY

GROUP

TYPE

MAP

WHAT IS ACORN?

## ACORN TYPE PROFILE - HOUSEHOLDS

© 2021 CACI Limited and all other applicable third party notices (Acorn) can be found at www.caci.co.uk/copyrightnotices.pdf

Area: ATLT\_AlexandraBB3 1NL (0.62 Mile contour)

Base: Great Britain

Year: 2021

Sort by:  Acorn Structure  
 Index  
 Profile %

Acorn Type Description		Area Profile	% for Area	% for Base	Index	0	100	200
<b>1. Affluent Achievers</b>								
<b>1.A Lavish Lifestyles</b>								
	1.A.1 Exclusive enclaves	0	0.0	0.1	0			
	1.A.2 Metropolitan money	0	0.0	0.2	0			
	1.A.3 Large house luxury	0	0.0	0.9	0			
<b>1.B Executive Wealth</b>								
	1.B.4 Asset rich families	52	1.6	2.6	61			
	1.B.5 Wealthy countryside commuters	0	0.0	2.4	0			
	1.B.6 Financially comfortable families	70	2.1	2.2	97			
	1.B.7 Affluent professionals	0	0.0	0.9	0			
	1.B.8 Prosperous suburban families	0	0.0	1.5	0			
	1.B.9 Well-off edge of towners	0	0.0	1.6	0			
<b>1.C Mature Money</b>								
	1.C.10 Better-off villagers	0	0.0	3.0	0			
	1.C.11 Settled suburbia, older people	125	3.8	2.9	133			
	1.C.12 Retired and empty nesters	22	0.7	2.5	27			
	1.C.13 Upmarket downsizers	34	1.0	1.3	79			
<b>2. Rising Prosperity</b>								
<b>2.D City Sophisticates</b>								
	2.D.14 Townhouse cosmopolitans	0	0.0	0.7	0			
	2.D.15 Younger professionals in smaller flats	0	0.0	1.5	0			
	2.D.16 Metropolitan professionals	0	0.0	0.8	0			
	2.D.17 Socialising young renters	0	0.0	1.0	0			
<b>2.E Career Climbers</b>								
	2.E.18 Career driven young families	0	0.0	1.9	0			
	2.E.19 First time buyers in small, modern homes	0	0.0	3.3	0			
	2.E.20 Mixed metropolitan areas	0	0.0	1.0	0			
<b>3. Comfortable Communities</b>								
<b>3.F Countryside Communities</b>								
	3.F.21 Farms and cottages	0	0.0	1.5	0			
	3.F.22 Older couples and families in rural areas	0	0.0	1.1	0			
	3.F.23 Owner occupiers in small towns and villages	19	0.6	3.2	18			
<b>3.G Successful Suburbs</b>								
	3.G.24 Comfortably-off families in modern housing	136	4.1	2.6	157			
	3.G.25 Larger family homes, multi-ethnic areas	0	0.0	0.8	0			
	3.G.26 Semi-professional families, owner occupied neighbourhoods	187	5.7	2.4	235			
<b>3.H Steady Neighbourhoods</b>								
	3.H.27 Suburban semis, conventional attitudes	27	0.8	3.4	24			
	3.H.28 Owner occupied terraces, average income	2	0.1	1.6	4			
	3.H.29 Established suburbs, older families	0	0.0	2.3	0			
<b>3.I Comfortable Seniors</b>								
	3.I.30 Older people, neat and tidy neighbourhoods	21	0.6	2.4	27			
	3.I.31 Elderly singles in purpose-built accommodation	0	0.0	0.5	0			
<b>3.J Starting Out</b>								
	3.J.32 Educated families in terraces, young children	0	0.0	2.1	0			
	3.J.33 Smaller houses and starter homes	71	2.2	2.3	96			
<b>4. Financially Stretched</b>								
<b>4.K Student Life</b>								
	4.K.34 Student flats and halls of residence	0	0.0	0.4	0			
	4.K.35 Term-time terraces	0	0.0	0.3	0			
	4.K.36 Educated young people in flats and tenements	0	0.0	1.7	0			
<b>4.L Modest Means</b>								
	4.L.37 Low cost flats in suburban areas	8	0.2	1.4	17			
	4.L.38 Semi-skilled workers in traditional neighbourhoods	105	3.2	2.6	122			
	4.L.39 Fading owner occupied terraces	745	22.7	2.9	788			
	4.L.40 High occupancy terraces, culturally diverse family areas	0	0.0	1.0	0			
<b>4.M Striving Families</b>								
	4.M.41 Labouring semi-rural estates	0	0.0	1.6	0			
	4.M.42 Struggling young families in post-war terraces	9	0.3	1.7	16			
	4.M.43 Families in right-to-buy estates	0	0.0	2.1	0			
	4.M.44 Post-war estates, limited means	64	1.9	2.2	89			
<b>4.N Poorer Pensioners</b>								
	4.N.45 Pensioners in social housing, semis and terraces	24	0.7	0.8	93			
	4.N.46 Elderly people in social rented flats	45	1.4	1.1	126			
	4.N.47 Low income older people in smaller semis	0	0.0	2.3	0			
	4.N.48 Pensioners and singles in social rented flats	28	0.9	1.8	48			
<b>5. Urban Adversity</b>								
<b>5.O Young Hardship</b>								
	5.O.49 Young families in low cost private flats	92	2.8	2.1	131			
	5.O.50 Struggling younger people in mixed tenure	80	2.4	1.7	140			
	5.O.51 Young people in small, low cost terraces	1,191	36.3	2.3	1,610			
<b>5.P Struggling Estates</b>								
	5.P.52 Poorer families, many children, terraced housing	47	1.4	1.6	88			
	5.P.53 Low income terraces	0	0.0	0.9	0			
	5.P.54 Multi-ethnic, purpose-built estates	0	0.0	1.2	0			
	5.P.55 Deprived and ethnically diverse in flats	0	0.0	0.8	0			
	5.P.56 Low income large families in social rented semis	0	0.0	1.6	0			
<b>5.Q Difficult Circumstances</b>								
	5.Q.57 Social rented flats, families and single parents	0	0.0	1.5	0			
	5.Q.58 Singles and young families, some receiving benefits	40	1.2	1.8	68			
	5.Q.59 Deprived areas and high-rise flats	22	0.7	2.0	33			
<b>6. Not Private Households</b>								
<b>6.R Not Private Households</b>								
	6.R.60 Active communal population	0	0.0	0.1	0			
	6.R.61 Inactive communal population	17	0.5	0.3	188			
	6.R.62 Business areas without resident population	0	0	0	0			
<b>Total households</b>		<b>3,283</b>						

CATEGORY

GROUP

TYPE

MAP

WHAT IS ACORN?

## DOMINANT ACORN GROUP - HOUSEHOLDS

Area: ATLT\_AlexandraBB3 1NL (0.62 Mile contour)

© 2021 CACI Limited and all other applicable third party notices (Acorn) can be found at [www.caci.co.uk/copyrightnotices.pdf](http://www.caci.co.uk/copyrightnotices.pdf)

Source: OS Open Data 2018



- Dominant Acorn Category
- % Affluent Achievers
- % Rising Prosperity
- % Comfortable Communities
- % Financially Stretched
- % Urban Adversity
- Dominant Acorn Group

## Acorn Groups

- 1.A Lavish Lifestyles
- 1.B Executive Wealth
- 1.C Mature Money
- 2.D City Sophisticates
- 2.E Career Climbers
- 3.F Countryside Communities
- 3.G Successful Suburbs
- 3.H Steady Neighbourhoods
- 3.I Comfortable Seniors
- 3.J Starting Out
- 4.K Student Life
- 4.L Modest Means
- 4.M Striving Families
- 4.N Poorer Pensioners
- 5.O Young Hardship
- 5.P Struggling Estates
- 5.Q Difficult Circumstances
- 6.R Not Private Households

Area boundary

CATEGORY

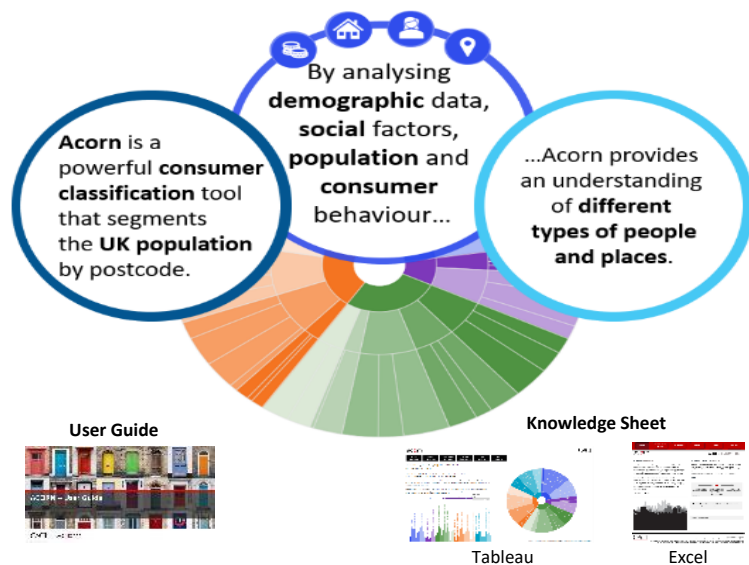
GROUP

TYPE

MAP

WHAT IS ACORN?

## ACORN - WHAT IS IT?

© 2021 CACI Limited and all other applicable third party notices (Acorn) can be found at [www.caci.co.uk/copyrightnotices.pdf](http://www.caci.co.uk/copyrightnotices.pdf)

6 CATEGORIES

18 GROUPS

62 TYPES

1. Affluent Achievers	A. Lavish Lifestyles	1-3
	B. Executive Wealth	4-9
	C. Mature Money	10-13
2. Rising Prosperity	D. City Sophisticates	14-17
	E. Career Climbers	18-20
	F. Countryside Communities	21-23
3. Comfortable Communities	G. Successful Suburbs	24-26
	H. Steady Neighbourhoods	27-29
	I. Comfortable Seniors	30-31
	J. Starting Out	32-33
4. Financially Stretched	K. Student Life	34-36
	L. Modest Means	37-40
	M. Striving Families	41-44
	N. Poorer Pensioners	45-48
5. Urban Adversity	O. Young Hardship	49-51
	P. Struggling Estates	52-56
	Q. Difficult Circumstances	57-59
6. Not Private Households	R. Not Private Households	60-62

