

CATEGORY

GROUP

TYPE

MAP

WHAT IS ACORN?

## ACORN CATEGORY PROFILE - HOUSEHOLDS

© 2021 CACI Limited and all other applicable third party notices (Acorn) can be found at [www.caci.co.uk/copyrightnotices.pdf](http://www.caci.co.uk/copyrightnotices.pdf)

Area: ATLT\_Wellington InnWA7 1LB (15 min contour)

Base: Great Britain

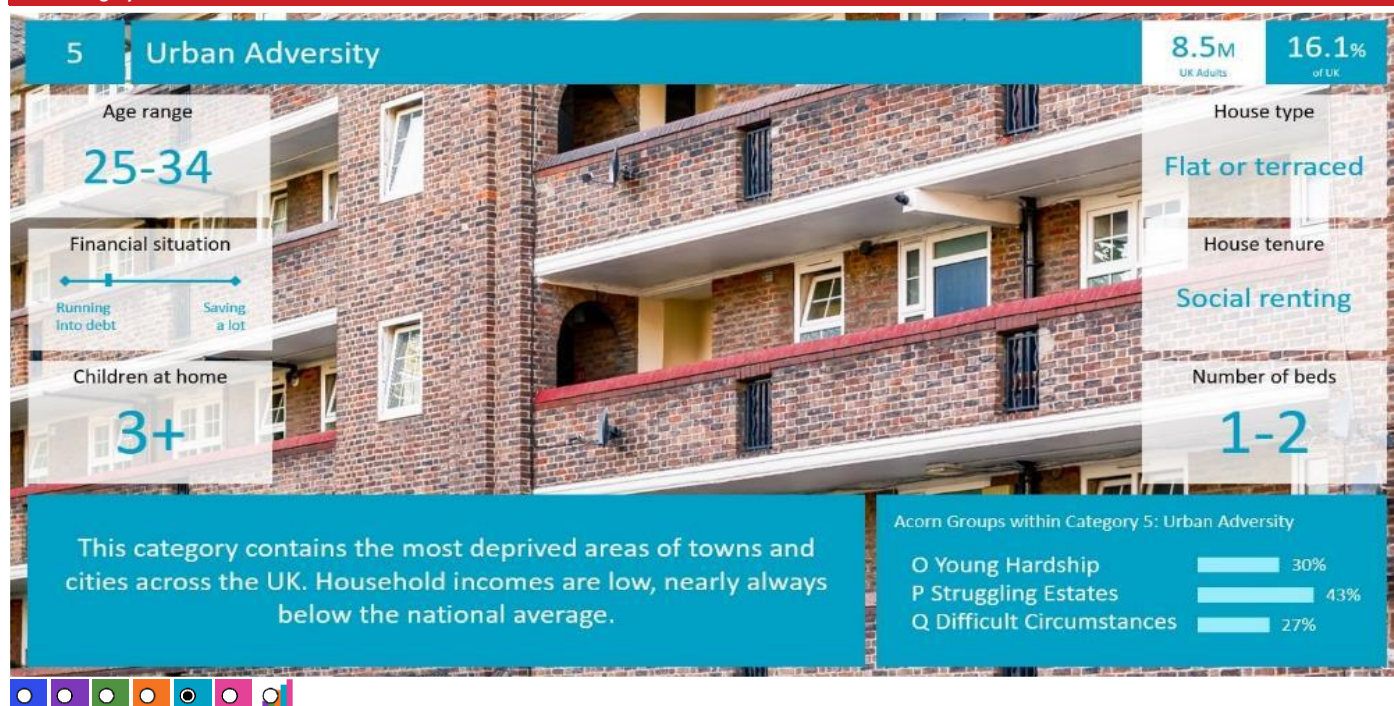
Year: 2021

Acorn Category Description	Area Profile	% for Area	% for Base	Index 0	100	200
1 Affluent Achievers	5,653	11.5	22.0	52		
2 Rising Prosperity	1,040	2.1	10.1	21		
3 Comfortable Communities	11,167	22.6	26.2	86		
4 Financially Stretched	15,482	31.4	23.7	132		
5 Urban Adversity	15,840	32.1	17.6	182		
6 Not Private Households	125	0.3	0.3	76		
<b>Total households</b>	<b>49,307</b>					



Graph

## Acorn Category Pen Portrait



CATEGORY

GROUP

TYPE

MAP

WHAT IS ACORN?

## ACORN GROUP PROFILE - HOUSEHOLDS

© 2021 CACI Limited and all other applicable third party notices (Acorn) can be found at [www.caci.co.uk/copyrightnotices.pdf](http://www.caci.co.uk/copyrightnotices.pdf)

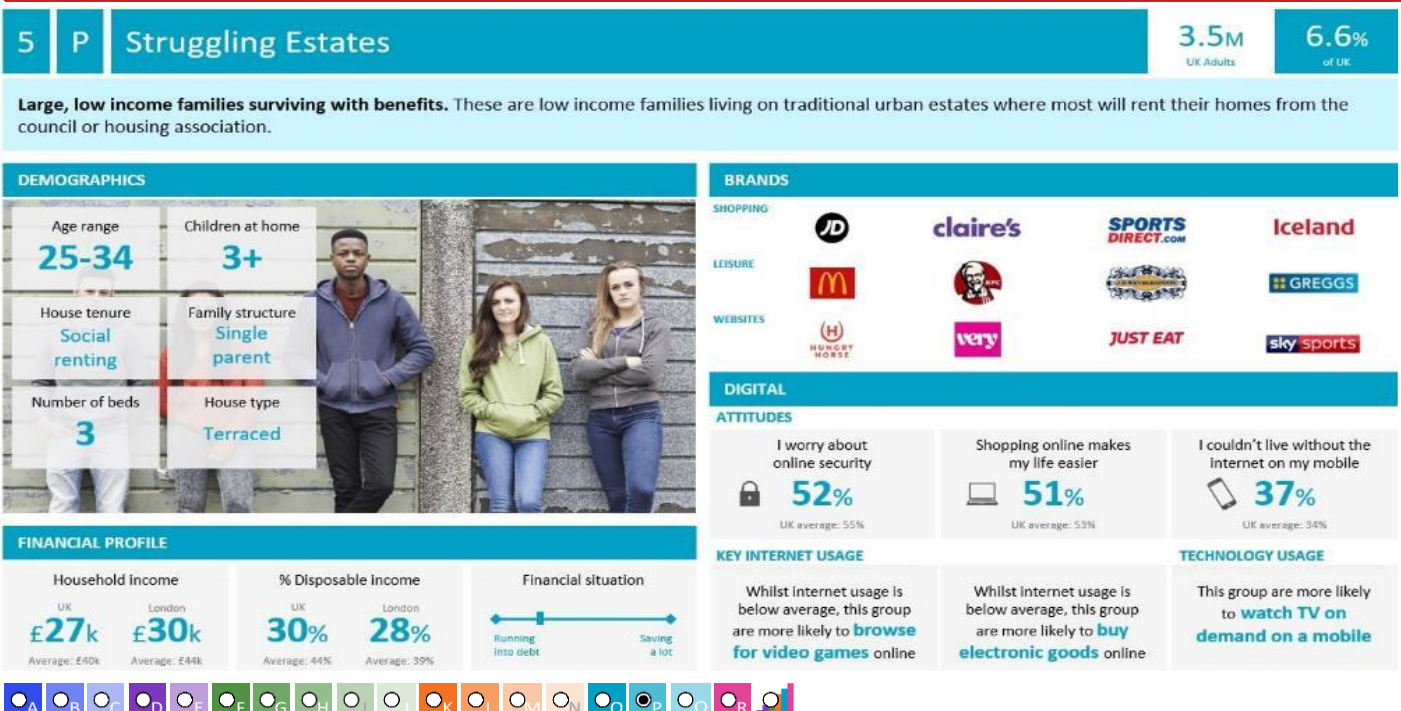
Area: ATLT\_Wellington InnWA7 1LB (15 min contour)

Base: Great Britain

Year: 2021

Acorn Group Description	Area Profile	% for Area	% for Base	Index	0	100	200
<b>1. Affluent Achievers</b>							
1.A Lavish Lifestyles	0	0.0	1.1	0			
1.B Executive Wealth	3,244	6.6	11.2	59			
1.C Mature Money	2,409	4.9	9.6	51			
<b>2. Rising Prosperity</b>							
2.D City Sophisticates	0	0.0	4.0	0			
2.E Career Climbers	1,040	2.1	6.2	34			
<b>3. Comfortable Communities</b>							
3.F Countryside Communities	828	1.7	5.7	29			
3.G Successful Suburbs	2,193	4.4	5.9	76			
3.H Steady Neighbourhoods	5,285	10.7	7.4	146			
3.I Comfortable Seniors	1,303	2.6	2.9	91			
3.J Starting Out	1,558	3.2	4.3	73			
<b>4. Financially Stretched</b>							
4.K Student Life	0	0.0	2.4	0			
4.L Modest Means	5,008	10.2	7.9	128			
4.M Striving Families	7,069	14.3	7.5	190			
4.N Poorer Pensioners	3,405	6.9	5.9	117			
<b>5. Urban Adversity</b>							
5.O Young Hardship	4,336	8.8	6.1	143			
5.P Struggling Estates	7,376	15.0	6.1	245			
5.Q Difficult Circumstances	4,128	8.4	5.3	157			
<b>6. Not Private Households</b>							
6.R Not Private Households	125	0.3	0.3	76			
<b>Total households</b>	<b>49,307</b>						

## Acorn Group Pen Portrait



CATEGORY

GROUP

TYPE

MAP

WHAT IS ACORN?

## ACORN TYPE PROFILE - HOUSEHOLDS

© 2021 CACI Limited and all other applicable third party notices (Acorn) can be found at [www.caci.co.uk/copyrightnotices.pdf](http://www.caci.co.uk/copyrightnotices.pdf)

Area: ATLT\_Wellington InnWA7 1LB (15 min contour)

Base: Great Britain

Year: 2021

Sort by:  Acorn Structure  
 Index  
 Profile %

Acorn Type Description		Area Profile	% for Area	% for Base	Index	0	100	200
<b>1. Affluent Achievers</b>								
<b>1.A Lavish Lifestyles</b>								
	1.A.1 Exclusive enclaves	0	0.0	0.1	0			
	1.A.2 Metropolitan money	0	0.0	0.2	0			
	1.A.3 Large house luxury	0	0.0	0.9	0			
<b>1.B Executive Wealth</b>								
	1.B.4 Asset rich families	585	1.2	2.6	45			
	1.B.5 Wealthy countryside commuters	77	0.2	2.4	6			
	1.B.6 Financially comfortable families	1,628	3.3	2.2	150			
	1.B.7 Affluent professionals	0	0.0	0.9	0			
	1.B.8 Prosperous suburban families	29	0.1	1.5	4			
	1.B.9 Well-off edge of towners	925	1.9	1.6	116			
<b>1.C Mature Money</b>								
	1.C.10 Better-off villagers	188	0.4	3.0	13			
	1.C.11 Settled suburbia, older people	1,497	3.0	2.9	106			
	1.C.12 Retired and empty nesters	631	1.3	2.5	52			
	1.C.13 Upmarket downsizers	93	0.2	1.3	14			
<b>2. Rising Prosperity</b>								
<b>2.D City Sophisticates</b>								
	2.D.14 Townhouse cosmopolitans	0	0.0	0.7	0			
	2.D.15 Younger professionals in smaller flats	0	0.0	1.5	0			
	2.D.16 Metropolitan professionals	0	0.0	0.8	0			
	2.D.17 Socialising young renters	0	0.0	1.0	0			
<b>2.E Career Climbers</b>								
	2.E.18 Career driven young families	569	1.2	1.9	61			
	2.E.19 First time buyers in small, modern homes	471	1.0	3.3	29			
	2.E.20 Mixed metropolitan areas	0	0.0	1.0	0			
<b>3. Comfortable Communities</b>								
<b>3.F Countryside Communities</b>								
	3.F.21 Farms and cottages	3	0.0	1.5	0			
	3.F.22 Older couples and families in rural areas	7	0.0	1.1	1			
	3.F.23 Owner occupiers in small towns and villages	818	1.7	3.2	52			
<b>3.G Successful Suburbs</b>								
	3.G.24 Comfortably-off families in modern housing	1,917	3.9	2.6	147			
	3.G.25 Larger family homes, multi-ethnic areas	0	0.0	0.8	0			
	3.G.26 Semi-professional families, owner occupied neighbourhoods	276	0.6	2.4	23			
<b>3.H Steady Neighbourhoods</b>								
	3.H.27 Suburban semis, conventional attitudes	3,894	7.9	3.4	229			
	3.H.28 Owner occupied terraces, average income	3	0.0	1.6	0			
	3.H.29 Established suburbs, older families	1,388	2.8	2.3	121			
<b>3.I Comfortable Seniors</b>								
	3.I.30 Older people, neat and tidy neighbourhoods	1,229	2.5	2.4	103			
	3.I.31 Elderly singles in purpose-built accommodation	74	0.2	0.5	31			
<b>3.J Starting Out</b>								
	3.J.32 Educated families in terraces, young children	232	0.5	2.1	22			
	3.J.33 Smaller houses and starter homes	1,326	2.7	2.3	119			
<b>4. Financially Stretched</b>								
<b>4.K Student Life</b>								
	4.K.34 Student flats and halls of residence	0	0.0	0.4	0			
	4.K.35 Term-time terraces	0	0.0	0.3	0			
	4.K.36 Educated young people in flats and tenements	0	0.0	1.7	0			
<b>4.L Modest Means</b>								
	4.L.37 Low cost flats in suburban areas	254	0.5	1.4	37			
	4.L.38 Semi-skilled workers in traditional neighbourhoods	2,053	4.2	2.6	158			
	4.L.39 Fading owner occupied terraces	2,701	5.5	2.9	190			
	4.L.40 High occupancy terraces, culturally diverse family areas	0	0.0	1.0	0			
<b>4.M Striving Families</b>								
	4.M.41 Labouring semi-rural estates	230	0.5	1.6	29			
	4.M.42 Struggling young families in post-war terraces	773	1.6	1.7	94			
	4.M.43 Families in right-to-buy estates	1,434	2.9	2.1	140			
	4.M.44 Post-war estates, limited means	4,632	9.4	2.2	427			
<b>4.N Poorer Pensioners</b>								
	4.N.45 Pensioners in social housing, semis and terraces	648	1.3	0.8	168			
	4.N.46 Elderly people in social rented flats	493	1.0	1.1	92			
	4.N.47 Low income older people in smaller semis	1,400	2.8	2.3	125			
	4.N.48 Pensioners and singles in social rented flats	864	1.8	1.8	99			
<b>5. Urban Adversity</b>								
<b>5.O Young Hardship</b>								
	5.O.49 Young families in low cost private flats	1,065	2.2	2.1	101			
	5.O.50 Struggling younger people in mixed tenure	988	2.0	1.7	115			
	5.O.51 Young people in small, low cost terraces	2,283	4.6	2.3	205			
<b>5.P Struggling Estates</b>								
	5.P.52 Poorer families, many children, terraced housing	6,073	12.3	1.6	758			
	5.P.53 Low income terraces	0	0.0	0.9	0			
	5.P.54 Multi-ethnic, purpose-built estates	0	0.0	1.2	0			
	5.P.55 Deprived and ethnically diverse in flats	0	0.0	0.8	0			
	5.P.56 Low income large families in social rented semis	1,303	2.6	1.6	160			
<b>5.Q Difficult Circumstances</b>								
	5.Q.57 Social rented flats, families and single parents	219	0.4	1.5	29			
	5.Q.58 Singles and young families, some receiving benefits	2,907	5.9	1.8	329			
	5.Q.59 Deprived areas and high-rise flats	1,002	2.0	2.0	100			
<b>6. Not Private Households</b>								
<b>6.R Not Private Households</b>								
	6.R.60 Active communal population	1	0.0	0.1	3			
	6.R.61 Inactive communal population	124	0.3	0.3	91			
	6.R.62 Business areas without resident population	0	0	0	0			
<b>Total households</b>		<b>49,307</b>						



CATEGORY

GROUP

TYPE

MAP

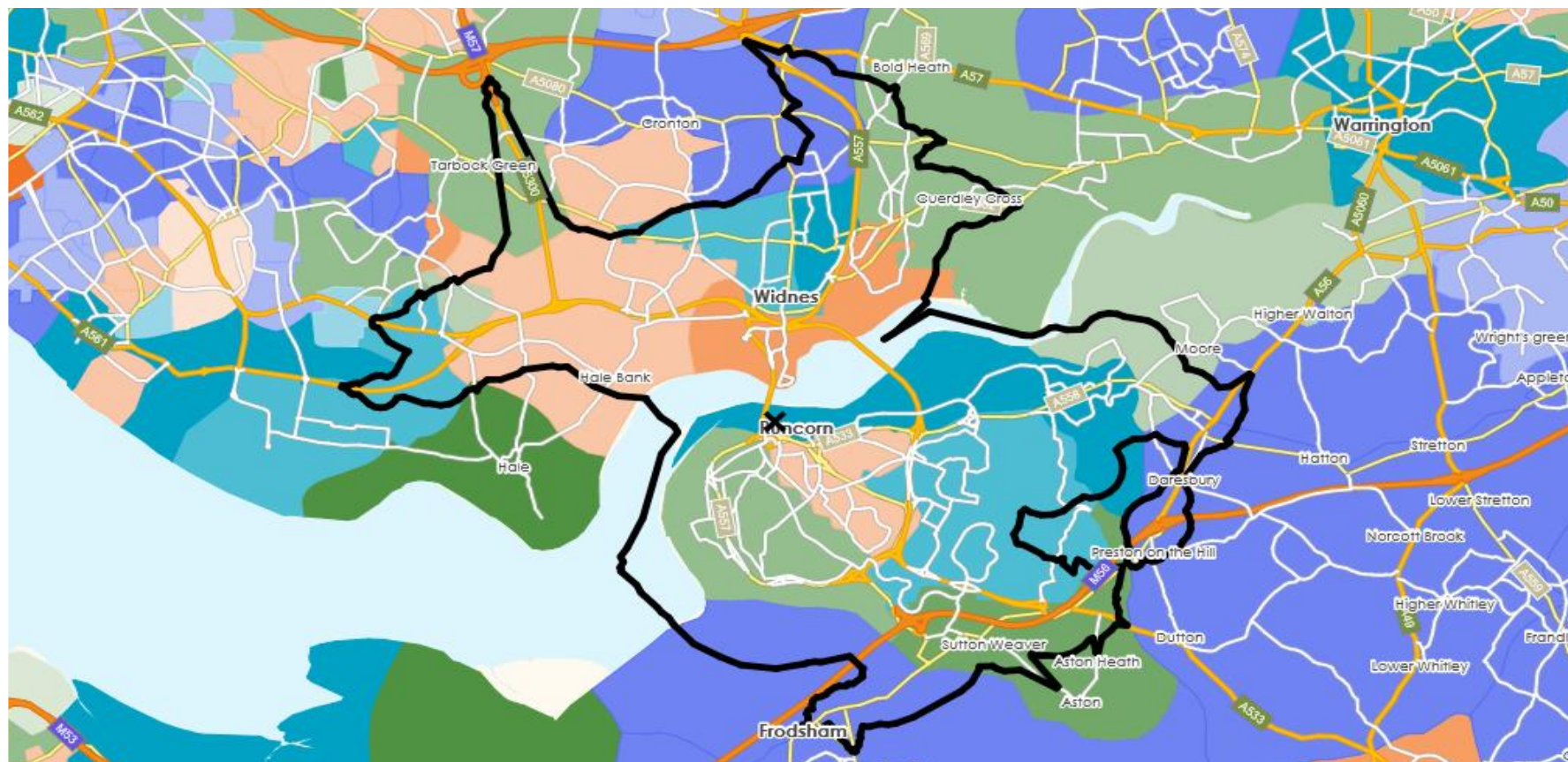
WHAT IS ACORN?

## DOMINANT ACORN GROUP - HOUSEHOLDS

Area: ATLT\_Wellington InnWA7 1LB (15 min contour)

© 2021 CACI Limited and all other applicable third party notices (Acorn) can be found at [www.caci.co.uk/copyrightnotices.pdf](http://www.caci.co.uk/copyrightnotices.pdf)

Source: OS Open Data 2018



- Dominant Acorn Category
- % Affluent Achievers
- % Rising Prosperity
- % Comfortable Communities
- % Financially Stretched
- % Urban Adversity
- Dominant Acorn Group

## Acorn Groups

- 1.A Lavish Lifestyles
- 1.B Executive Wealth
- 1.C Mature Money
- 2.D City Sophisticates
- 2.E Career Climbers
- 3.F Countryside Communities
- 3.G Successful Suburbs
- 3.H Steady Neighbourhoods
- 3.I Comfortable Seniors
- 3.J Starting Out
- 4.K Student Life
- 4.L Modest Means
- 4.M Striving Families
- 4.N Poorer Pensioners
- 5.O Young Hardship
- 5.P Struggling Estates
- 5.Q Difficult Circumstances
- 6.R Not Private Households

Area boundary

CATEGORY

GROUP

TYPE

MAP

WHAT IS ACORN?

## ACORN - WHAT IS IT?

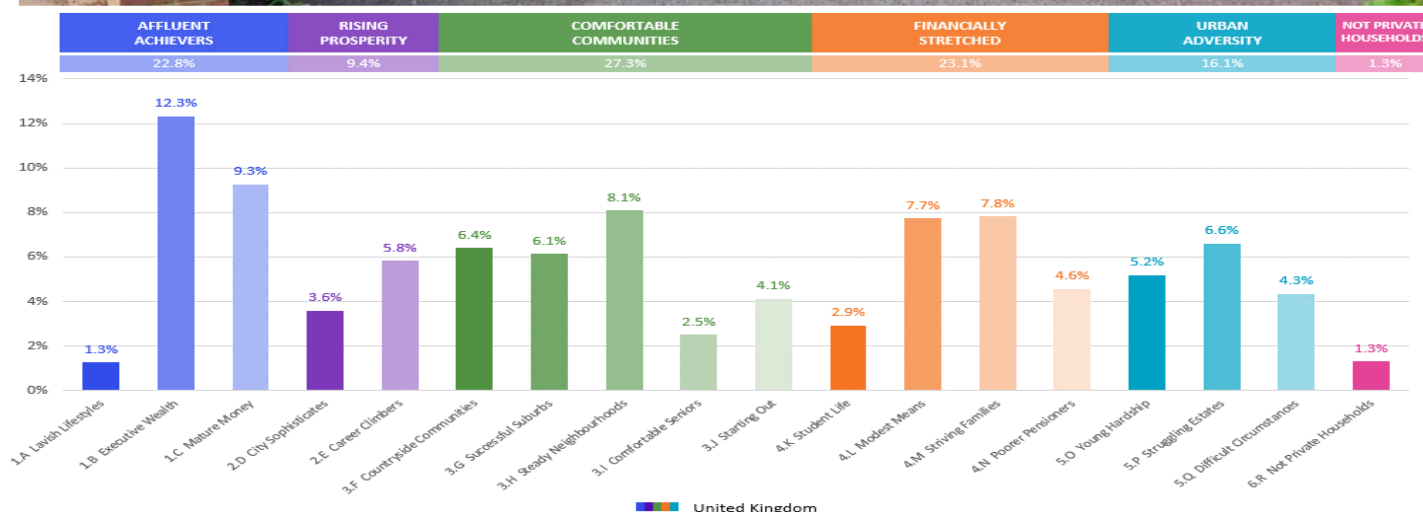
© 2021 CACI Limited and all other applicable third party notices (Acorn) can be found at [www.caci.co.uk/copyrightnotices.pdf](http://www.caci.co.uk/copyrightnotices.pdf)

6 CATEGORIES

18 GROUPS

62 TYPES

1. Affluent Achievers	A. Lavish Lifestyles	1-3
	B. Executive Wealth	4-9
	C. Mature Money	10-13
2. Rising Prosperity	D. City Sophisticates	14-17
	E. Career Climbers	18-20
	F. Countryside Communities	21-23
3. Comfortable Communities	G. Successful Suburbs	24-26
	H. Steady Neighbourhoods	27-29
	I. Comfortable Seniors	30-31
	J. Starting Out	32-33
4. Financially Stretched	K. Student Life	34-36
	L. Modest Means	37-40
	M. Striving Families	41-44
	N. Poorer Pensioners	45-48
5. Urban Adversity	O. Young Hardship	49-51
	P. Struggling Estates	52-56
	Q. Difficult Circumstances	57-59
6. Not Private Households	R. Not Private Households	60-62





# CGA LICENCED PREMISES

© 2021 CACI Limited and all other applicable third party notices (CGA) can be found at [www.caci.co.uk/copyrightnotices.pdf](http://www.caci.co.uk/copyrightnotices.pdf)

Area: ATLT\_Wellington InnWA7 1LB (15 min conto  
Base: Great Britain  
Year: 2021

Licence Type	Profile	Per 1000 Pop (Area)	Per 1000 Pop (Base)	Index	0	100	200
Pubs & Full On	74	65.7	84.9	77			
Proprietary Club	8	7.1	8.1	87			
Registered Club	32	28.4	29.9	95			
Restaurant	21	18.6	34.6	54			
Residential	0	0.0	3.5	0			

Name	Description	License Type	Owner Name	Postcode
Preston Brook	Whitbread	Pubs & Full On	Whitbread	WA 7 3BB
Ring O Bells	Greene King	Pubs & Full On	Greene King	WA 4 4AJ
Daresbury Park Hotel	Britannia Hotels	Pubs & Full On	Britannia Hotels	WA 4 4BB
Spice Of India	Independent Free	Restaurant	Independent Free	WA 5 2XD
Bears Paw	Greene King	Pubs & Full On	Greene King	WA 6 7AF
Red Lion	Stonegate Pub Company	Pubs & Full On	Stonegate Pub Company	WA 6 7AH
Queens Head	Stonegate Pub Company	Pubs & Full On	Stonegate Pub Company	WA 6 7AR
Kash 22	Independent Free	Restaurant	Independent Free	WA 6 6QW
Old Hall Hotel	Independent Free	Pubs & Full On	Independent Free	WA 6 7AB
India Garden Restaurant	Independent Free	Restaurant	Independent Free	WA 6 7AH
Oswalds Restaurant	Independent Free	Restaurant	Independent Free	WA 6 7AR
Frodsham Conservative Club	Independent Free	Registered Club	Independent Free	WA 6 7AU
Yuet Ben	Independent Free	Restaurant	Independent Free	WA 6 7AU
Cholmondeley Arms	Marston's	Pubs & Full On	Marston's	WA 6 7EB
Royal	Amber Taverns	Pubs & Full On	Amber Taverns	WA 7 1AU
Devonshire	Independent Free	Pubs & Full On	Independent Free	WA 7 1HU
Clarendon Hotel	Unknown	Pubs & Full On	Unknown	WA 7 1LG
Norton Arms Hotel	Greene King	Pubs & Full On	Greene King	WA 7 2AD
Castle	Independent Free	Pubs & Full On	Independent Free	WA 7 2BE
Round House	Punch Pub Company	Pubs & Full On	Punch Pub Company	WA 7 4RP
Lion	*Other Small Retail Groups	Pubs & Full On	*Other Small Retail Groups	WA 7 5AG
Halfway House	Blind Tiger Inns	Pubs & Full On	Star Pubs & Bars	WA 7 5NR
Grapes	Unknown	Pubs & Full On	Unknown	WA 7 5SB
Chambers	Ei Group	Pubs & Full On	Ei Group	WA 7 1AH
Tandoori Night	Independent Free	Restaurant	Independent Free	WA 7 1AP
Raob Social Club	Independent Free	Registered Club	Independent Free	WA 7 1JH
Wellington Inn	Admiral Taverns Ltd	Pubs & Full On	Admiral Taverns Ltd	WA 7 1LB
Barley Mow	Greene King	Pubs & Full On	Greene King	WA 7 1LD
Fiddlers Three	Unknown	Pubs & Full On	Unknown	WA 7 2LH
Beechwood Hotel	Daniel Thwaites plc	Pubs & Full On	Daniel Thwaites plc	WA 7 2PZ
Holiday Inn	InterContinental Hotels Group	Pubs & Full On	InterContinental Hotels Group	WA 7 3HA
Royal British Legion Club	Independent Free	Registered Club	Independent Free	WA 7 2BE
Runcorn District Conservative Club	Independent Free	Registered Club	Independent Free	WA 7 4PH
Beechwood West Community Associati	Independent Free	Registered Club	Independent Free	WA 7 3HB
Runcorn Sports Club	Independent Free	Registered Club	Independent Free	WA 7 4SF
Runcorn Golf Club	Independent Free	Registered Club	Independent Free	WA 7 4SU
Runcorn War Memorial Club	Independent Free	Registered Club	Independent Free	WA 7 5BD
Red Admiral	Greene King	Pubs & Full On	Greene King	WA 7 5JQ
Bridgewater Motor Boat Club	Independent Free	Registered Club	Independent Free	WA 7 5SS
Brookvale Recreation Centre	Independent Free	Proprietary Club	Independent Free	WA 7 6BJ
Hough Green Social Club	Independent Free	Registered Club	Independent Free	WA 8 8XR
Mersey Hotel	Independent Free	Pubs & Full On	Independent Free	WA 8 0DT
Crows Nest	Punch Pub Company	Pubs & Full On	Punch Pub Company	WA 8 3HU
Simms Cross	Punch Pub Company	Pubs & Full On	Punch Pub Company	WA 8 6AX
Derby Arms	Amber Taverns	Pubs & Full On	Amber Taverns	WA 8 6BA
Majors Arms	Punch Pub Company	Pubs & Full On	Punch Pub Company	WA 8 6QR
Cookhouse	Punch Pub Company	Pubs & Full On	Punch Pub Company	WA 8 7ER
Ball Hotel	Punch Pub Company	Pubs & Full On	Punch Pub Company	WA 8 7EZ
Horse & Jockey	Independent Free	Pubs & Full On	Independent Free	WA 8 7SU
Crown Inn	Star Pubs & Bars	Pubs & Full On	Star Pubs & Bars	WA 8 7TE
Mersey View Hotel	Unknown	Pubs & Full On	Unknown	WA 8 8LP
Beehive Inn	Unknown	Pubs & Full On	Unknown	WA 8 8NQ
Blundell Arms	*Other Small Retail Groups	Pubs & Full On	*Other Small Retail Groups	WA 8 8SX

## CGA LICENCED PREMISES

© 2021 CACI Limited and all other applicable third party notices (CGA) can be found at [www.caci.co.uk/copyrightnotices.pdf](http://www.caci.co.uk/copyrightnotices.pdf)

Area: ATLT\_Wellington InnWA7 1LB (15 min conto  
 Base: Great Britain  
 Year: 2021

Licence Type	Profile	Per 1000 Pop (Area)	Per 1000 Pop (Base)	Index	0	100	200
Pubs & Full On	74	65.7	84.9	77			
Proprietary Club	8	7.1	8.1	87			
Registered Club	32	28.4	29.9	95			
Restaurant	21	18.6	34.6	54			
Residential	0	0.0	3.5	0			

Name	Description	License Type	Owner Name	Postcode
Ring O Bells	Stonegate Pub Company	Pubs & Full On	Stonegate Pub Company	WA 8 9HU
Griffin	Punch Pub Company	Pubs & Full On	Punch Pub Company	WA 8 9LH
Church View Inn	Greene King	Pubs & Full On	Greene King	WA 8 5RY
Everglades Park Hotel	Lavendar Hotels	Pubs & Full On	Lavendar Hotels	WA 8 3UJ
Moorfield Sports & Social Club	Independent Free	Registered Club	Independent Free	WA 8 3HQ
Eight Towers	Marston's	Pubs & Full On	Marston's	WA 8 3RH
Grapes Inn	Trust Inns Limited	Pubs & Full On	Trust Inns Limited	WA 8 6AP
Raob	Independent Free	Registered Club	Independent Free	WA 8 6EG
St Bedes Catholic Mens Club	Independent Free	Registered Club	Independent Free	WA 8 6EL
Appleton Village Social Club	Independent Free	Registered Club	Independent Free	WA 8 6EQ
Annies	Independent Free	Pubs & Full On	Independent Free	WA 8 6JS
Bradley	Greene King	Pubs & Full On	Greene King	WA 8 6JT
Simms Cross Institute	Independent Free	Registered Club	Independent Free	WA 8 6PN
Millfield	*Other Small Retail Groups	Pubs & Full On	*Other Small Retail Groups	WA 8 6QR
Widnes Golf Club	Independent Free	Registered Club	Independent Free	WA 8 7DT
Cricketers Arms	Independent Free	Pubs & Full On	Independent Free	WA 8 7JP
Widnes Bowling Club	Independent Free	Registered Club	Independent Free	WA 8 7JP
Widnes Rugby Union Football Club	Independent Free	Registered Club	Independent Free	WA 8 7NU
United Services Social Club	Independent Free	Registered Club	Independent Free	WA 8 7PD
Widnes Masonic	Independent Free	Registered Club	Independent Free	WA 8 7QH
Kingsway Hotel	Admiral Taverns Ltd	Pubs & Full On	Admiral Taverns Ltd	WA 8 7RA
Cornerhouse	Independent Free	Pubs & Full On	Independent Free	WA 8 7TR
St Michaels Golf Club	Independent Free	Registered Club	Independent Free	WA 8 8BS
Rosss Social Club	Independent Free	Registered Club	Independent Free	WA 8 8ES
Our Lady Of Perpetual Succour	Independent Free	Registered Club	Independent Free	WA 8 8PR
New Inn	*Other Small Retail Groups	Pubs & Full On	*Other Small Retail Groups	WA 8 8PZ
Runcorn War Memorial Club	Independent Free	Registered Club	Independent Free	WA 8 8QW
St Michaels Parochial Club	Independent Free	Registered Club	Independent Free	WA 8 8TF
Goldmine	Independent Free	Pubs & Full On	Independent Free	WA 8 8UU
Widnes Cricket Club	Independent Free	Registered Club	Independent Free	WA 8 9LA
Helter Skelter Bar & Restaurant	Independent Free	Pubs & Full On	Independent Free	WA 6 6PN
Campanile Hotel	Campanile Hotels	Pubs & Full On	Campanile Hotels	WA 7 5TR
Wellington	Punch Pub Company	Pubs & Full On	Punch Pub Company	WA 8 7PD
Lockdown	Independent Free	Pubs & Full On	Independent Free	WA 7 1SA
Pulse Bar	Independent Free	Pubs & Full On	Independent Free	WA 8 7RA
Prospect Inn	Unknown	Pubs & Full On	Unknown	WA 7 4LD
Toby Carvery	Mitchells & Butlers	Pubs & Full On	Mitchells & Butlers	WA 8 0TA
Mill Brow Social Club	Independent Free	Registered Club	Independent Free	WA 8 6RT
Naga	Independent Free	Restaurant	Independent Free	WA 6 7AH
Widnes Vikings Rugby League Football C	Independent Free	Proprietary Club	Independent Free	WA 8 7DZ
Gala Bingo	Gala Group	Proprietary Club	Gala Group	WA 8 7TN
Wilsons Hotel	*Other Small Retail Groups	Pubs & Full On	*Other Small Retail Groups	WA 7 1BY
Amore & Mojito's 88 Bar	Independent Free	Pubs & Full On	Independent Free	WA 6 7HE
Premier	Wetherspoon	Pubs & Full On	Wetherspoon	WA 8 6LB
Raj Tandoori Restaurant	Independent Free	Restaurant	Independent Free	WA 8 0AX
Birchfield Sports & Social Club	Independent Free	Registered Club	Independent Free	WA 8 7SU
Wine Bar	Independent Free	Pubs & Full On	Independent Free	WA 7 1LT
Windmill	Unknown	Pubs & Full On	Unknown	WA 7 6QZ
Simply Gym	*Other Small Retail Groups	Proprietary Club	*Other Small Retail Groups	WA 7 2FQ
Royal Oak	Independent Free	Pubs & Full On	Independent Free	WA 7 4RP
Chi Nar Garden	Independent Free	Restaurant	Independent Free	WA 8 8UU
Brindley Arts Centre	Independent Free	Pubs & Full On	Independent Free	WA 7 1BG
Saffron Indian Rest	Independent Free	Restaurant	Independent Free	WA 8 9LQ

# CGA LICENCED PREMISES

© 2021 CACI Limited and all other applicable third party notices (CGA) can be found at [www.caci.co.uk/copyrightnotices.pdf](http://www.caci.co.uk/copyrightnotices.pdf)

Area: ATLT\_Wellington InnWA7 1LB (15 min conto  
Base: Great Britain  
Year: 2021

Licence Type	Profile	Per 1000 Pop (Area)	Per 1000 Pop (Base)	Index	0	100	200
Pubs & Full On	74	65.7	84.9	77			
Proprietary Club	8	7.1	8.1	87			
Registered Club	32	28.4	29.9	95			
Restaurant	21	18.6	34.6	54			
Residential	0	0.0	3.5	0			

Name	Description	License Type	Owner Name	Postcode
Cineworld	Cineworld Cinemas Ltd	Pubs & Full On	Cineworld Cinemas Ltd	WA 7 2FQ
San Marino	Independent Free	Restaurant	Independent Free	WA 8 6AX
Ferry Boat	Wetherspoon	Pubs & Full On	Wetherspoon	WA 7 1LR
Desii	Independent Free	Restaurant	Independent Free	WA 8 7TR
Fm Caffe	Independent Free	Restaurant	Independent Free	WA 8 6AZ
Chinese Delight Restaurant	Independent Free	Restaurant	Independent Free	WA 6 7HJ
Evenwood Farm	Greene King	Pubs & Full On	Greene King	WA 7 1LZ
Establishment	Independent Free	Proprietary Club	Independent Free	WA 8 7QZ
Pizza Hut	Pizza Hut UK Ltd	Restaurant	Pizza Hut UK Ltd	WA 7 2FQ
Club 2000 Bingo	Independent Free	Proprietary Club	Independent Free	WA 7 2FQ
Runcorn Masonic Club	Independent Free	Registered Club	Independent Free	WA 7 5BB
Frankie & Bennys	Restaurant Group	Restaurant	Restaurant Group	WA 8 0TA
Superbowl Uk	Superbowl Uk	Proprietary Club	Superbowl Uk	WA 8 0TA
Buffet Place	Whitbread	Pubs & Full On	Whitbread	WA 8 0TA
Premier Inn	Whitbread Hotels	Pubs & Full On	Whitbread	WA 8 0GY
Nandos	Nandos Restaurants	Restaurant	Nandos Restaurants	WA 8 0TA
West Bank Bears Amateur Rugby League	Independent Free	Registered Club	Independent Free	WA 8 0PZ
Gusto D'oro	Independent Free	Restaurant	Independent Free	WA 7 1JG
Planet Ice	Arena Group	Proprietary Club	Arena Group	WA 8 0TA
Heath Restaurant	Independent Free	Restaurant	Independent Free	WA 7 4QX
Arroy Thai	Independent Free	Restaurant	Independent Free	WA 8 6AZ
Barton Rouge Widnes	Independent Free	Restaurant	Independent Free	WA 8 5SQ
Ten Lock Flight	Marston's	Pubs & Full On	Marston's	WA 7 5AQ
Queen Of Hearts	Marston's	Pubs & Full On	Marston's	WA 7 6SA
Runcorn Town Football Club	Independent Free	Registered Club	Independent Free	WA 7 4ET
Runcorn Linnets Football Club	Independent Free	Registered Club	Independent Free	WA 7 6GJ
Society	Independent Free	Pubs & Full On	Independent Free	WA 7 1HU
Artisan Green	Independent Free	Pubs & Full On	Independent Free	WA 6 7AB
Bakehouse	Independent Free	Pubs & Full On	Independent Free	WA 7 4PR



Source: OS Open Data 2018

Large pub co's & bars

- Powered by **InSite**  
www.caci.co.uk