

CATEGORY

GROUP

TYPE

MAP

WHAT IS ACORN?

## ACORN CATEGORY PROFILE - HOUSEHOLDS

© 2021 CACI Limited and all other applicable third party notices (Acorn) can be found at [www.caci.co.uk/copyrightnotices.pdf](http://www.caci.co.uk/copyrightnotices.pdf)

Area: ATLT\_Spring CottageWS1 2HZ (15 min contour)

Base: Great Britain

Year: 2021

Acorn Category Description	Area Profile	% for Area	% for Base	Index	0	100	200
1 Affluent Achievers	9,416	12.7	22.0	58			
2 Rising Prosperity	807	1.1	10.1	11			
3 Comfortable Communities	15,917	21.4	26.2	82			
4 Financially Stretched	24,381	32.8	23.7	138			
5 Urban Adversity	23,568	31.8	17.6	180			
6 Not Private Households	132	0.2	0.3	53			
<b>Total households</b>	<b>74,221</b>						



Graph

## Acorn Category Pen Portrait



CATEGORY

GROUP

TYPE

MAP

WHAT IS ACORN?

## ACORN GROUP PROFILE - HOUSEHOLDS

© 2021 CACI Limited and all other applicable third party notices (Acorn) can be found at www.caci.co.uk/copyrightnotices.pdf

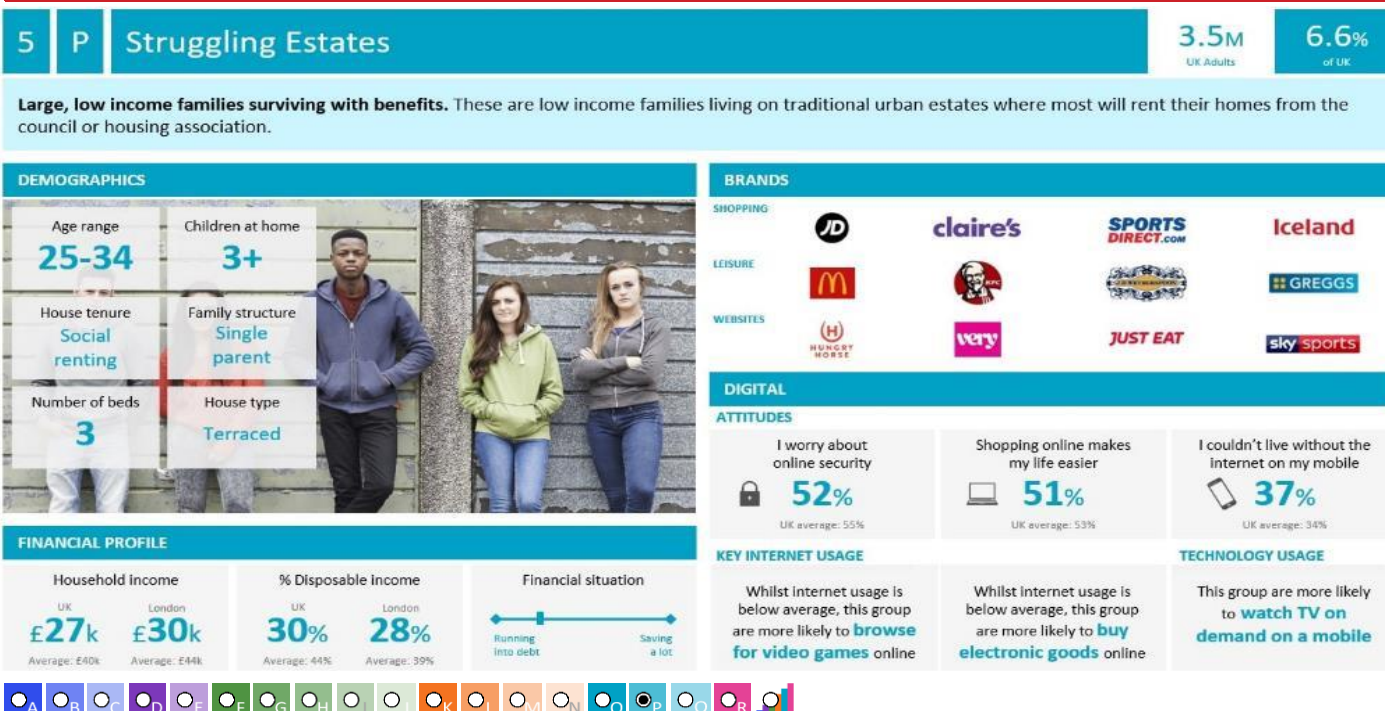
Area: ATLT\_Spring CottageWS1 2HZ (15 min contour)

Base: Great Britain

Year: 2021

Acorn Group Description	Area Profile	% for Area	% for Base	Index	0	100	200
<b>1. Affluent Achievers</b>							
1.A Lavish Lifestyles	64	0.1	1.1	8			
1.B Executive Wealth	4,899	6.6	11.2	59			
1.C Mature Money	4,453	6.0	9.6	62			
<b>2. Rising Prosperity</b>							
2.D City Sophisticates	0	0.0	4.0	0			
2.E Career Climbers	807	1.1	6.2	18			
<b>3. Comfortable Communities</b>							
3.F Countryside Communities	317	0.4	5.7	7			
3.G Successful Suburbs	3,426	4.6	5.9	78			
3.H Steady Neighbourhoods	7,240	9.8	7.4	133			
3.I Comfortable Seniors	1,506	2.0	2.9	70			
3.J Starting Out	3,428	4.6	4.3	106			
<b>4. Financially Stretched</b>							
4.K Student Life	899	1.2	2.4	51			
4.L Modest Means	9,225	12.4	7.9	157			
4.M Striving Families	8,468	11.4	7.5	151			
4.N Poorer Pensioners	5,789	7.8	5.9	132			
<b>5. Urban Adversity</b>							
5.O Young Hardship	5,472	7.4	6.1	120			
5.P Struggling Estates	10,345	13.9	6.1	228			
5.Q Difficult Circumstances	7,751	10.4	5.3	195			
<b>6. Not Private Households</b>							
6.R Not Private Households	132	0.2	0.3	53			
<b>Total households</b>	<b>74,221</b>						

## Acorn Group Pen Portrait



CATEGORY

GROUP

TYPE

MAP

WHAT IS ACORN?

## ACORN TYPE PROFILE - HOUSEHOLDS

© 2021 CACI Limited and all other applicable third party notices (Acorn) can be found at www.caci.co.uk/copyrightnotices.pdf

Area: ATLT\_Spring CottageWS1 2HZ (15 min contour)

Base: Great Britain

Year: 2021

Sort by:  Acorn Structure  
 Index  
 Profile %

Acorn Type Description		Area Profile	% for Area	% for Base	Index	0	100	200
<b>1. Affluent Achievers</b>								
<b>1.A Lavish Lifestyles</b>								
	1.A.1 Exclusive enclaves	0	0.0	0.1	0			
	1.A.2 Metropolitan money	0	0.0	0.2	0			
	1.A.3 Large house luxury	64	0.1	0.9	10			
<b>1.B Executive Wealth</b>								
	1.B.4 Asset rich families	2,256	3.0	2.6	116			
	1.B.5 Wealthy countryside commuters	174	0.2	2.4	10			
	1.B.6 Financially comfortable families	1,150	1.5	2.2	70			
	1.B.7 Affluent professionals	5	0.0	0.9	1			
	1.B.8 Prosperous suburban families	287	0.4	1.5	25			
	1.B.9 Well-off edge of towners	1,027	1.4	1.6	86			
<b>1.C Mature Money</b>								
	1.C.10 Better-off villagers	482	0.6	3.0	22			
	1.C.11 Settled suburbia, older people	2,818	3.8	2.9	133			
	1.C.12 Retired and empty nesters	555	0.7	2.5	30			
	1.C.13 Upmarket downsizers	598	0.8	1.3	62			
<b>2. Rising Prosperity</b>								
<b>2.D City Sophisticates</b>								
	2.D.14 Townhouse cosmopolitans	0	0.0	0.7	0			
	2.D.15 Younger professionals in smaller flats	0	0.0	1.5	0			
	2.D.16 Metropolitan professionals	0	0.0	0.8	0			
	2.D.17 Socialising young renters	0	0.0	1.0	0			
<b>2.E Career Climbers</b>								
	2.E.18 Career driven young families	128	0.2	1.9	9			
	2.E.19 First time buyers in small, modern homes	677	0.9	3.3	28			
	2.E.20 Mixed metropolitan areas	2	0.0	1.0	0			
<b>3. Comfortable Communities</b>								
<b>3.F Countryside Communities</b>								
	3.F.21 Farms and cottages	0	0.0	1.5	0			
	3.F.22 Older couples and families in rural areas	0	0.0	1.1	0			
	3.F.23 Owner occupiers in small towns and villages	317	0.4	3.2	13			
<b>3.G Successful Suburbs</b>								
	3.G.24 Comfortably-off families in modern housing	1,940	2.6	2.6	99			
	3.G.25 Larger family homes, multi-ethnic areas	1,434	1.9	0.8	236			
	3.G.26 Semi-professional families, owner occupied neighbourhoods	52	0.1	2.4	3			
<b>3.H Steady Neighbourhoods</b>								
	3.H.27 Suburban semis, conventional attitudes	5,602	7.5	3.4	219			
	3.H.28 Owner occupied terraces, average income	345	0.5	1.6	29			
	3.H.29 Established suburbs, older families	1,293	1.7	2.3	75			
<b>3.I Comfortable Seniors</b>								
	3.I.30 Older people, neat and tidy neighbourhoods	1,297	1.7	2.4	72			
	3.I.31 Elderly singles in purpose-built accommodation	209	0.3	0.5	57			
<b>3.J Starting Out</b>								
	3.J.32 Educated families in terraces, young children	1,344	1.8	2.1	86			
	3.J.33 Smaller houses and starter homes	2,084	2.8	2.3	125			
<b>4. Financially Stretched</b>								
<b>4.K Student Life</b>								
	4.K.34 Student flats and halls of residence	0	0.0	0.4	0			
	4.K.35 Term-time terraces	0	0.0	0.3	0			
	4.K.36 Educated young people in flats and tenements	899	1.2	1.7	70			
<b>4.L Modest Means</b>								
	4.L.37 Low cost flats in suburban areas	948	1.3	1.4	91			
	4.L.38 Semi-skilled workers in traditional neighbourhoods	1,427	1.9	2.6	73			
	4.L.39 Fading owner occupied terraces	846	1.1	2.9	40			
	4.L.40 High occupancy terraces, culturally diverse family areas	6,004	8.1	1.0	811			
<b>4.M Striving Families</b>								
	4.M.41 Labouring semi-rural estates	28	0.0	1.6	2			
	4.M.42 Struggling young families in post-war terraces	677	0.9	1.7	54			
	4.M.43 Families in right-to-buy estates	6,059	8.2	2.1	393			
	4.M.44 Post-war estates, limited means	1,704	2.3	2.2	104			
<b>4.N Poorer Pensioners</b>								
	4.N.45 Pensioners in social housing, semis and terraces	758	1.0	0.8	130			
	4.N.46 Elderly people in social rented flats	578	0.8	1.1	72			
	4.N.47 Low income older people in smaller semis	2,123	2.9	2.3	126			
	4.N.48 Pensioners and singles in social rented flats	2,330	3.1	1.8	178			
<b>5. Urban Adversity</b>								
<b>5.O Young Hardship</b>								
	5.O.49 Young families in low cost private flats	1,853	2.5	2.1	116			
	5.O.50 Struggling younger people in mixed tenure	1,886	2.5	1.7	146			
	5.O.51 Young people in small, low cost terraces	1,733	2.3	2.3	104			
<b>5.P Struggling Estates</b>								
	5.P.52 Poorer families, many children, terraced housing	4,413	5.9	1.6	366			
	5.P.53 Low income terraces	13	0.0	0.9	2			
	5.P.54 Multi-ethnic, purpose-built estates	0	0.0	1.2	0			
	5.P.55 Deprived and ethnically diverse in flats	56	0.1	0.8	9			
	5.P.56 Low income large families in social rented semis	5,863	7.9	1.6	479			
<b>5.Q Difficult Circumstances</b>								
	5.Q.57 Social rented flats, families and single parents	2,615	3.5	1.5	232			
	5.Q.58 Singles and young families, some receiving benefits	2,062	2.8	1.8	155			
	5.Q.59 Deprived areas and high-rise flats	3,074	4.1	2.0	203			
<b>6. Not Private Households</b>								
<b>6.R Not Private Households</b>								
	6.R.60 Active communal population	21	0.0	0.1	49			
	6.R.61 Inactive communal population	111	0.1	0.3	54			
	6.R.62 Business areas without resident population	0	0	0	0			
<b>Total households</b>		<b>74,221</b>						



CATEGORY

GROUP

TYPE

MAP

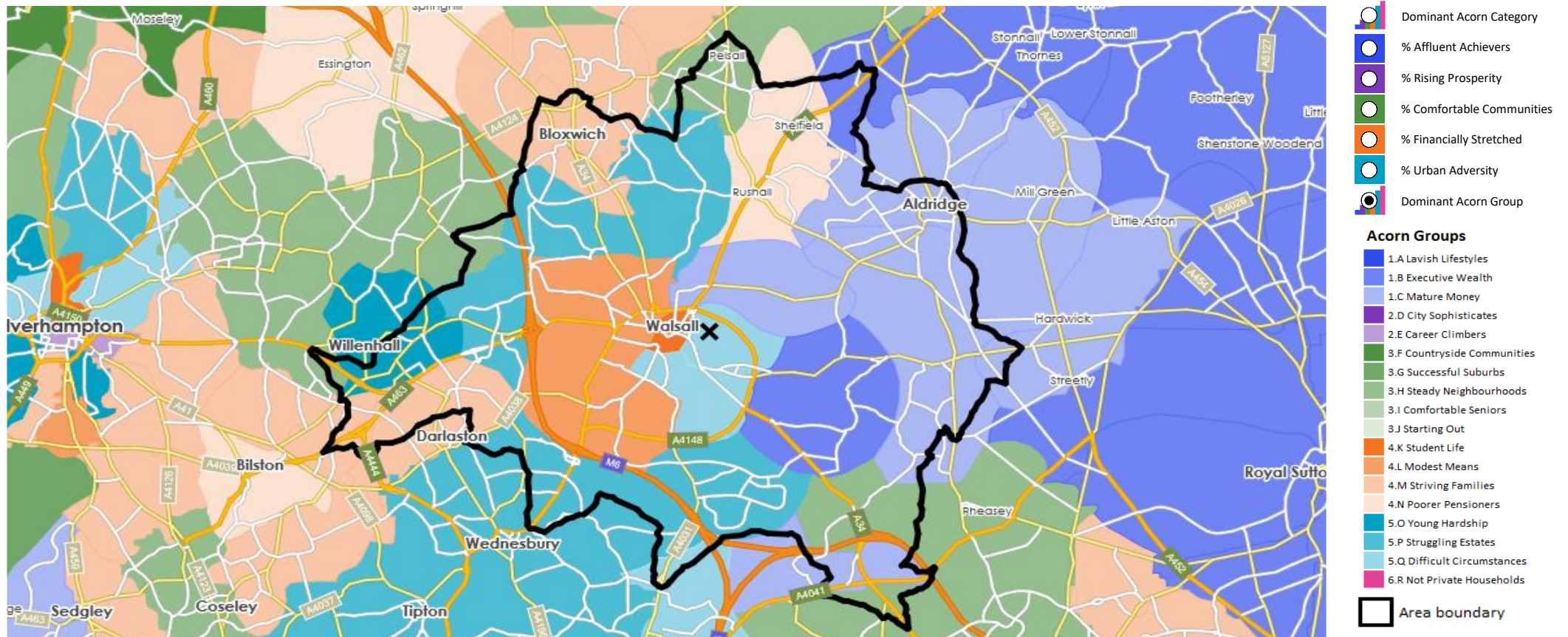
WHAT IS ACORN?

## DOMINANT ACORN GROUP - HOUSEHOLDS

Area: ATLT\_Spring CottageWS1 2HZ (15 min contour)

© 2021 CACI Limited and all other applicable third party notices (Acorn) can be found at [www.caci.co.uk/copyrightnotices.pdf](http://www.caci.co.uk/copyrightnotices.pdf)

Source: OS Open Data 2018



CATEGORY

GROUP

TYPE

MAP

WHAT IS ACORN?

## ACORN - WHAT IS IT?

© 2021 CACI Limited and all other applicable third party notices (Acorn) can be found at [www.caci.co.uk/copyrightnotices.pdf](http://www.caci.co.uk/copyrightnotices.pdf)

6 CATEGORIES

18 GROUPS

62 TYPES

1. Affluent Achievers	A. Lavish Lifestyles	1-3
	B. Executive Wealth	4-9
	C. Mature Money	10-13
2. Rising Prosperity	D. City Sophisticates	14-17
	E. Career Climbers	18-20
3. Comfortable Communities	F. Countryside Communities	21-23
	G. Successful Suburbs	24-26
	H. Steady Neighbourhoods	27-29
	I. Comfortable Seniors	30-31
	J. Starting Out	32-33
4. Financially Stretched	K. Student Life	34-36
	L. Modest Means	37-40
	M. Striving Families	41-44
	N. Poorer Pensioners	45-48
5. Urban Adversity	O. Young Hardship	49-51
	P. Struggling Estates	52-56
	Q. Difficult Circumstances	57-59
6. Not Private Households	R. Not Private Households	60-62

1 Affluent Achievers

12.0M UK Adults

22.8% of UK

Age range

55+

Financial situation

Running into debt

Saving a lot

Children at home

0

House type

Detached

House tenure

Owned outright

Number of beds

4+

These are some of the most financially successful people in the UK. They live in affluent, high status areas of the country. They are healthy, wealthy and confident consumers.

Acorn Groups within Category 1: Affluent Achievers

A. Lavish Lifestyles

B. Executive Wealth

C. Mature Money





# CGA LICENCED PREMISES

© 2021 CACI Limited and all other applicable third party notices (CGA) can be found at [www.caci.co.uk/copyrightnotices.pdf](http://www.caci.co.uk/copyrightnotices.pdf)

Area: ATLT\_Spring CottageWS1 2HZ (15 min conto  
Base: Great Britain  
Year: 2021

Licence Type	Profile	Per 1000 Pop (Area)	Per 1000 Pop (Base)	Index	0	100	200
Pubs & Full On	116	60.1	84.9	71			
Proprietary Club	15	7.8	8.1	96			
Registered Club	48	24.9	29.9	83			
Restaurant	29	15.0	34.6	43			
Residential	0	0.0	3.5	0			

Name	Description	License Type	Owner Name	Postcode
Rise Club	Independent Free	Registered Club	Independent Free	B 42 2BJ
Scott Arms	Stonegate Pub Company	Pubs & Full On	Stonegate Pub Company	B 43 6BN
Great Barr Conservative Club	Independent Free	Registered Club	Independent Free	B 43 6BN
Great Barr Club	Independent Free	Registered Club	Independent Free	B 43 6PL
Recreation Centre	Independent Free	Registered Club	Independent Free	B 43 7AP
Beacon	Mitchells & Butlers	Pubs & Full On	Mitchells & Butlers	B 43 7AG
Great Barr Golf Club	Independent Free	Registered Club	Independent Free	B 43 7BA
Holiday Inn	InterContinental Hotels Group	Pubs & Full On	InterContinental Hotels Group	B 43 7BG
Curry And Grill House	Independent Free	Restaurant	Independent Free	B 71 3LH
Foley Arms	Marston's	Pubs & Full On	Marston's	B 74 3NU
Red Lion	Admiral Taverns Ltd	Pubs & Full On	Admiral Taverns Ltd	WS 1 1NW
Harvester George Stephenson	Mitchells & Butlers	Pubs & Full On	Mitchells & Butlers	WS 2 7EU
Masters Snooker Club	Independent Free	Proprietary Club	Independent Free	WS 1 1JQ
Polski Klub Alibi	Independent Free	Proprietary Club	Independent Free	WS 1 1PL
Lounge	Independent Free	Pubs & Full On	Independent Free	WS 1 1QD
Manhattans	*Other Small Retail Groups	Proprietary Club	*Other Small Retail Groups	WS 1 1SL
Fountain Inn	*Other Small Retail Groups	Pubs & Full On	*Other Small Retail Groups	WS 1 1XB
Victoria	Independent Free	Pubs & Full On	Independent Free	WS 1 2AA
Chuckery Mutual Club	Independent Free	Registered Club	Independent Free	WS 1 2DL
Royal Hotel	Independent Free	Pubs & Full On	Independent Free	WS 1 2EL
Walsall Arms	Independent Free	Pubs & Full On	Independent Free	WS 1 2EP
Watering Trough	Star Pubs & Bars	Pubs & Full On	Star Pubs & Bars	WS 1 2EU
Shimla Peppers	Independent Free	Pubs & Full On	Independent Free	WS 1 2EU
Lyndon House Hotel	*Other Small Retail Groups	Pubs & Full On	*Other Small Retail Groups	WS 1 2HA
Spring Cottage	Admiral Taverns Ltd	Pubs & Full On	Admiral Taverns Ltd	WS 1 2HZ
Duke Of York	Independent Free	Pubs & Full On	Independent Free	WS 1 2LH
County Hotel	Independent Free	Pubs & Full On	Independent Free	WS 1 2NG
Toby Carvery	Mitchells & Butlers	Pubs & Full On	Mitchells & Butlers	WS 1 2QA
Walsall Cricket Club	Independent Free	Registered Club	Independent Free	WS 1 3BE
Walsall Golf Club	Independent Free	Registered Club	Independent Free	WS 1 3EY
New Fulbrook	Unknown	Pubs & Full On	Unknown	WS 1 3HL
Walsall Rugby Club	Independent Free	Registered Club	Independent Free	WS 1 3JY
Bombay Mix	Independent Free	Restaurant	Independent Free	WS 1 3QA
Bar Nv	Independent Free	Pubs & Full On	Independent Free	WS 1 3QD
Samra	Independent Free	Registered Club	Independent Free	WS 1 3RN
Caldmore Green Club	Independent Free	Registered Club	Independent Free	WS 1 4BP
Cambridge	*Other Small Retail Groups	Pubs & Full On	*Other Small Retail Groups	WS 1 4BX
London Midland Railway Clubs Associati	Independent Free	Registered Club	Independent Free	WS 1 4JG
Bradford Armshockers	Independent Free	Pubs & Full On	Independent Free	WS 1 4LA
Nags Head	*Other Small Retail Groups	Pubs & Full On	*Other Small Retail Groups	WS10 8JP
Brunswick	Star Pubs & Bars	Pubs & Full On	Star Pubs & Bars	WS10 0QQ
Windmill	Stonegate Pub Company	Pubs & Full On	Stonegate Pub Company	WS10 0TW
Old Engine	Independent Free	Pubs & Full On	Independent Free	WS10 8AX
Voujon Lounge	Independent Free	Restaurant	Independent Free	WS10 8JP
Why Not Inn	Independent Free	Pubs & Full On	Independent Free	WS10 8LF
New Junction Inn	*Other Small Retail Groups	Pubs & Full On	*Other Small Retail Groups	WS10 8QU
Ye Olde Leathern Bottle	Stonegate Pub Company	Pubs & Full On	Stonegate Pub Company	WS10 9DW
Queens Head	Star Pubs & Bars	Pubs & Full On	Star Pubs & Bars	WS10 9QR
Wednesbury Sports Club	Independent Free	Registered Club	Independent Free	WS10 9QL
Casa Mia	Independent Free	Restaurant	Independent Free	WS10 9QW
Holiday Inn	InterContinental Hotels Group	Pubs & Full On	InterContinental Hotels Group	WS 2 8PW
Desi Star	Global Star	Pubs & Full On	Global Star	WS 2 8DX
North Walsall Atheneum Club	Independent Free	Registered Club	Independent Free	WS 2 7BQ

# CGA LICENCED PREMISES

© 2021 CACI Limited and all other applicable third party notices (CGA) can be found at [www.caci.co.uk/copyrightnotices.pdf](http://www.caci.co.uk/copyrightnotices.pdf)

Area: ATLT\_Spring CottageWS1 2HZ (15 min conto)  
Base: Great Britain  
Year: 2021

Licence Type	Profile	Per 1000 Pop (Area)	Per 1000 Pop (Base)	Index	0	100	200
Pubs & Full On	116	60.1	84.9	71			
Proprietary Club	15	7.8	8.1	96			
Registered Club	48	24.9	29.9	83			
Restaurant	29	15.0	34.6	43			
Residential	0	0.0	3.5	0			

Name	Description	License Type	Owner Name	Postcode
Beechdale Social Club	Independent Free	Registered Club	Independent Free	WS 2 7DX
Magic Lantern	Unknown	Pubs & Full On	Unknown	WS 2 7HR
Pretty Bricks	Black Country Ales	Pubs & Full On	Black Country Ales	WS 2 8AF
Cuckoo & Bell	Independent Free	Pubs & Full On	Independent Free	WS 2 8DG
Rock Steady Eddies	Independent Free	Pubs & Full On	Independent Free	WS 2 8EA
Crown Inn	*Other Small Retail Groups	Pubs & Full On	*Other Small Retail Groups	WS 2 8HP
Golden Lion	Independent Free	Pubs & Full On	Independent Free	WS 2 8NG
New Inn	Independent Free	Pubs & Full On	Independent Free	WS 2 8NU
Afro Caribbean Social Club	Independent Free	Registered Club	Independent Free	WS 2 8PR
Birchills Liberal Club	Independent Free	Registered Club	Independent Free	WS 2 8QD
Rose & Crown	Independent Free	Pubs & Full On	Independent Free	WS 2 8QH
Parkbrook	*Other Small Retail Groups	Pubs & Full On	*Other Small Retail Groups	WS 2 8RJ
Bentley Moor Club	Independent Free	Registered Club	Independent Free	WS 2 8RY
Alma Inn	Independent Free	Pubs & Full On	Independent Free	WS 2 8SP
King George V	*Other Small Retail Groups	Pubs & Full On	*Other Small Retail Groups	WS 2 9BZ
Bradford Arms	Independent Free	Pubs & Full On	Independent Free	WS 2 9HE
Bentley Green	Whitbread	Pubs & Full On	Whitbread	WS 2 0WB
Gabbas	*Other Small Retail Groups	Pubs & Full On	*Other Small Retail Groups	WS 2 9QR
James Bridge Copper Social Club	Independent Free	Registered Club	Independent Free	WS 2 9RX
Globe Inn	Admiral Taverns Ltd	Pubs & Full On	Admiral Taverns Ltd	WS 2 9SG
West Walsall E-Act Academy	Independent Free	Registered Club	Independent Free	WS 2 9UA
Gunners Club 2	Independent Free	Registered Club	Independent Free	WS 3 1HB
Kings Head	Admiral Taverns Ltd	Pubs & Full On	Admiral Taverns Ltd	WS 3 1LU
Colebatchs Club	Independent Free	Registered Club	Independent Free	WS 3 2BD
Crown	Unknown	Pubs & Full On	Unknown	WS 3 2BH
Panka Walla	Independent Free	Restaurant	Independent Free	WS 3 2DA
Gunners Club	Independent Free	Registered Club	Independent Free	WS 3 2DD
Hatherton Arms	Admiral Taverns Ltd	Pubs & Full On	Admiral Taverns Ltd	WS 3 2DN
Grosvenor Park Football Club	Independent Free	Registered Club	Independent Free	WS 3 2EJ
Spotted Cow	Admiral Taverns Ltd	Pubs & Full On	Admiral Taverns Ltd	WS 3 2EZ
Romping Cat	Marston's	Pubs & Full On	Marston's	WS 3 2HN
Spring Cottage	*Other Small Retail Groups	Pubs & Full On	*Other Small Retail Groups	WS 3 2HW
Bell Inn	Admiral Taverns Ltd	Pubs & Full On	Admiral Taverns Ltd	WS 3 2JN
Gulshan Restaurant	Independent Free	Restaurant	Independent Free	WS 3 2JH
Sir Robert Peel	Stonegate Pub Company	Pubs & Full On	Stonegate Pub Company	WS 3 2JS
Railway	Independent Free	Pubs & Full On	Independent Free	WS 3 2UY
Old Hall Snooker Club	Independent Free	Proprietary Club	Independent Free	WS 3 3HJ
Bloxwich Memorial Club	Independent Free	Registered Club	Independent Free	WS 3 3HP
Bloxwich Excelsior Club & Institute	Independent Free	Registered Club	Independent Free	WS 3 3HS
Queens Head	Admiral Taverns Ltd	Pubs & Full On	Admiral Taverns Ltd	WS 3 3JQ
Prince Of Wales	Independent Free	Pubs & Full On	Independent Free	WS 3 3LG
Bloxwich Sports Club	Independent Free	Registered Club	Independent Free	WS 3 3NJ
Queens	Marston's	Pubs & Full On	Marston's	WS 3 4AY
Railway	Stonegate Pub Company	Pubs & Full On	Stonegate Pub Company	WS 3 4BH
Pelsall Cricket & Sports Club	Independent Free	Registered Club	Independent Free	WS 3 4BP
Pelsall Community Centre	Independent Free	Registered Club	Independent Free	WS 3 4BQ
Manor Farm Community Association	Independent Free	Registered Club	Independent Free	WS 4 1EU
Rushall Labour Club	Independent Free	Registered Club	Independent Free	WS 4 1HB
Farmers Boy	Star Pubs & Bars	Pubs & Full On	Star Pubs & Bars	WS 4 1HH
Manor Arms	Marston's	Pubs & Full On	Marston's	WS 4 1LG
Rushall Olympic Football Club	Independent Free	Registered Club	Independent Free	WS 4 1LJ
St Francis Catholic Mens Club	Independent Free	Registered Club	Independent Free	WS 4 1RH
Butts Tavern	*Other Small Retail Groups	Pubs & Full On	*Other Small Retail Groups	WS 4 2BJ

## CGA LICENCED PREMISES

© 2021 CACI Limited and all other applicable third party notices (CGA) can be found at [www.caci.co.uk/copyrightnotices.pdf](http://www.caci.co.uk/copyrightnotices.pdf)

Area: ATLT\_Spring CottageWS1 2HZ (15 min conto  
 Base: Great Britain  
 Year: 2021

Licence Type	Profile	Per 1000 Pop (Area)	Per 1000 Pop (Base)	Index	0	100	200
Pubs & Full On	116	60.1	84.9	71			
Proprietary Club	15	7.8	8.1	96			
Registered Club	48	24.9	29.9	83			
Restaurant	29	15.0	34.6	43			
Residential	0	0.0	3.5	0			

Name	Description	License Type	Owner Name	Postcode
Beverley Hotel	Independent Free	Pubs & Full On	Independent Free	WS 4 2DJ
Dilke Arms	Whitbread	Pubs & Full On	Whitbread	WS 4 2JL
3Rd Walsall Sea Scouts	Independent Free	Registered Club	Independent Free	WS 4 2JT
Calderfields Golf Club	Independent Free	Registered Club	Independent Free	WS 4 2JS
Wheatsheaf	Trust Inns Limited	Pubs & Full On	Trust Inns Limited	WS 1 2NA
Metro Inn	Metro Inns Ltd	Pubs & Full On	Metro Inns Ltd	WS 5 3AB
Longhorn	Mitchells & Butlers	Pubs & Full On	Mitchells & Butlers	WS 5 3AR
King Arthur	Stonegate Pub Company	Pubs & Full On	Stonegate Pub Company	WS 5 3EY
Bell	Mitchells & Butlers	Pubs & Full On	Mitchells & Butlers	WS 5 3JP
Handsworth Rugby Club	Independent Free	Registered Club	Independent Free	WS 5 3NX
Tiger	Stonegate Pub Company	Pubs & Full On	Stonegate Pub Company	WS 5 4DP
Archers	Star Pubs & Bars	Pubs & Full On	Star Pubs & Bars	WS 5 4EF
Red Lion	Independent Free	Pubs & Full On	Independent Free	WS 9 0BW
White House	Mitchells & Butlers	Pubs & Full On	Mitchells & Butlers	WS 9 0QE
Aldridge Community Centre	Independent Free	Registered Club	Independent Free	WS 9 8AN
Aldridge Social Club	Independent Free	Registered Club	Independent Free	WS 9 8LZ
Stick & Wicket Club	Independent Free	Registered Club	Independent Free	WS 9 8NH
Masonic Hall	Independent Free	Registered Club	Independent Free	WS 9 8NH
Aldridge Youth Theatre	Independent Free	Pubs & Full On	Independent Free	WS 9 8NQ
Aldridge Conservative & Unionist Club	Independent Free	Registered Club	Independent Free	WS 9 8NS
Avion	Wetherspoon	Pubs & Full On	Wetherspoon	WS 9 8PT
Crown	Mitchells & Butlers	Pubs & Full On	Mitchells & Butlers	WS 9 8PT
Aldridge Snooker Club	Independent Free	Proprietary Club	Independent Free	WS 9 8QR
Mercure Hotel	Accor Hotels	Pubs & Full On	Accor Hotels	WS 9 9AH
Horse And Jockey	Marston's	Pubs & Full On	Marston's	WS 9 9AJ
Q Bar	Independent Free	Proprietary Club	Independent Free	WS 9 9AJ
King Street Progressive Club	Independent Free	Registered Club	Independent Free	WS 9 9LN
Boatmans Rest	Independent Free	Pubs & Full On	Independent Free	WS 9 9LP
Drunken Duck	Stonegate Pub Company	Pubs & Full On	Stonegate Pub Company	WS 9 9LR
Old Oak	Independent Free	Pubs & Full On	Independent Free	WV13 2EF
Noahs Ark Inn	Marston's	Pubs & Full On	Marston's	WV13 1JB
Three Tuns	*Other Small Retail Groups	Pubs & Full On	*Other Small Retail Groups	WV13 2EH
Robin Hood	Black Country Ales	Pubs & Full On	Black Country Ales	WV13 2QR
Keymaster	Greene King	Pubs & Full On	Greene King	WV13 2RN
Sir Charles Napier	Independent Free	Pubs & Full On	Independent Free	WS 1 4LW
Darlaston Community Centre	Independent Free	Registered Club	Independent Free	WS10 8NW
Turf Tavern	Independent Free	Pubs & Full On	Independent Free	WS 3 2EZ
Wheatsheaf	Independent Free	Pubs & Full On	Independent Free	WS 3 3JL
Shepwell Green Social Club	Independent Free	Registered Club	Independent Free	WV13 2QF
Bridge Bar	Independent Free	Pubs & Full On	Independent Free	WS 1 1DP
Darlaston All Active	Independent Free	Registered Club	Independent Free	WS10 8JG
Oak Inn	*Other Small Retail Groups	Pubs & Full On	*Other Small Retail Groups	WS 2 8HH
Rushall Cricket Club	Independent Free	Registered Club	Independent Free	WS 4 1NG
Cinnamon Court	Independent Free	Restaurant	Independent Free	WS 2 0BP
St Mathews Hall	Wetherspoon	Pubs & Full On	Wetherspoon	WS 1 1SX
Tap & Tanner	Amber Taverns	Pubs & Full On	Amber Taverns	WS 1 1DA
King Balti Restaurant	Independent Free	Restaurant	Independent Free	WS 1 2EU
Arbor Lights	Punch Pub Company	Pubs & Full On	Punch Pub Company	WS 1 1SY
Flan Obrien	Stonegate Pub Company	Pubs & Full On	Stonegate Pub Company	WS 1 2EU
Gala Bingo	Gala Group	Proprietary Club	Gala Group	WS 1 3QB
Walsall Football Club	Independent Free	Proprietary Club	Independent Free	WS 1 4SA
Registry	Stonegate Pub Company	Pubs & Full On	Stonegate Pub Company	WS 1 1PT
Lydiat Restaurant	Independent Free	Restaurant	Independent Free	WS 2 9JZ



## CGA LICENCED PREMISES

© 2021 CACI Limited and all other applicable third party notices (CGA) can be found at [www.caci.co.uk/copyrightnotices.pdf](http://www.caci.co.uk/copyrightnotices.pdf)

Area: ATLT\_Spring CottageWS1 2HZ (15 min conto  
 Base: Great Britain  
 Year: 2021

Licence Type	Profile	Per 1000 Pop (Area)	Per 1000 Pop (Base)	Index	0	100	200
Pubs & Full On	116	60.1	84.9	71			
Proprietary Club	15	7.8	8.1	96			
Registered Club	48	24.9	29.9	83			
Restaurant	29	15.0	34.6	43			
Residential	0	0.0	3.5	0			

Name	Description	License Type	Owner Name	Postcode
Equator	Independent Free	Pubs & Full On	Independent Free	WS 1 1SL
Bar10	Unknown	Pubs & Full On	Unknown	WS 2 8LR
Boathouse	Star Pubs & Bars	Pubs & Full On	Star Pubs & Bars	WS 4 1LG
Eastend Tandoori Restaurant	Independent Free	Restaurant	Independent Free	WS 1 3HG
Suede	Independent Free	Proprietary Club	Independent Free	WS 1 1JQ
Basmati Restaurant	Independent Free	Restaurant	Independent Free	B 43 7AG
Religion	Independent Free	Proprietary Club	Independent Free	WS 1 1HR
Pitch Sports Bar & Grill	Bar Sport	Pubs & Full On	Bar Sport	WS 1 1JQ
Grosvenor Casino	Rank	Proprietary Club	Rank	WS 2 0LE
Queen Marys Sports & Social Club	Independent Free	Registered Club	Independent Free	WS 1 2PD
Village	KSL Capital Partners	Pubs & Full On	KSL Capital Partners	WS 2 8TJ
Goals	Goals Soccer Centres	Proprietary Club	Goals Soccer Centres	WV14 7BL
Essence Wine Bar	Independent Free	Pubs & Full On	Independent Free	WS 1 1QJ
Club X	Independent Free	Proprietary Club	Independent Free	WS 1 1PN
Kajal Restaurant	Independent Free	Restaurant	Independent Free	WS 5 3EY
Regards	Independent Free	Restaurant	Independent Free	WS 9 8PT
Park Inn	Radisson Hotel Group	Pubs & Full On	Radisson Hotel Group	WS 1 4SE
Express By Holiday Inn	Atlas Hotels	Pubs & Full On	Atlas Hotels	WS 2 8TJ
Bentley Leisure Pavilion	Independent Free	Pubs & Full On	Independent Free	WS 2 0EA
Pizza Hut	Pizza Hut UK Ltd	Restaurant	Pizza Hut UK Ltd	WS10 9QY
Black Country Arms	Black Country Ales	Pubs & Full On	Black Country Ales	WS 1 1QW
Showcase Cinema	National Amusements Inc	Pubs & Full On	National Amusements Inc	WS 2 0LE
Nandos	Nandos Restaurants	Restaurant	Nandos Restaurants	WS 2 8LL
Chestnut Tree	Marston's	Pubs & Full On	Marston's	WS10 9QY
Golden Moments	Independent Free	Restaurant	Independent Free	WS 1 2EU
Brewers Fayre	Whitbread	Pubs & Full On	Whitbread	WS 2 8LR
Sultans	Independent Free	Restaurant	Independent Free	WS 1 3RB
Bloxwich Showman	Wetherspoon	Pubs & Full On	Wetherspoon	WS 3 3JT
Gio's Italian	Independent Free	Restaurant	Independent Free	WS 3 1TR
Da Vincis	Independent Free	Restaurant	Independent Free	WS 9 8QP
Littleton	Independent Free	Restaurant	Independent Free	WS 2 8ES
Bella Italia	Big Table Group Ltd	Restaurant	Big Table Group Ltd	WS 2 8DH
Makoto Bar	Independent Free	Proprietary Club	Independent Free	WS 1 1JZ
Tgi Fridays	TGI Fridays UK Limited	Restaurant	TGI Fridays UK Limited	WS 2 8LR
Light Cinema	Light Cinema	Pubs & Full On	Light Cinema	WS 2 8DD
Waterfront	Greene King	Pubs & Full On	Greene King	WS 2 8DH
Jamal Fish Bar	Independent Free	Restaurant	Independent Free	WS 2 9JG
Nell's Bar	Independent Free	Pubs & Full On	Independent Free	WV13 2HA
Lexx Jerkz Bar & Grill	Independent Free	Restaurant	Independent Free	WS 1 1JQ
Piri Fino	Independent Free	Restaurant	Independent Free	WS 2 8LN
Nandos	Nandos Restaurants	Restaurant	Nandos Restaurants	WS10 9QY
Turtles Head	Independent Free	Pubs & Full On	Independent Free	WS 9 8LY
Smashburger	Smashburger	Restaurant	Smashburger	WS10 9QY
Bloxwich Cricket Club	Independent Free	Registered Club	Independent Free	WS 3 3NJ
Play Football	Play Football	Proprietary Club	Play Football	WS 1 3JY
Travelodge	Dubai International Capital	Pubs & Full On	Dubai International Capital	WS 2 8EQ
Ristorante Da Adriana	Independent Free	Restaurant	Independent Free	WS 1 1QL
Farmhouse	Greene King	Pubs & Full On	Greene King	WS 2 8TJ
Afrikan Kitchen	Afrikan Kitchen	Restaurant	Afrikan Kitchen	WS 9 8LX

Source: OS Open Data 2018

Area: ATLT\_Spring CottageWS1 2HZ (15 min contour)

